

# VITA | Fireplaces

North American Designed & Manufactured by **CF + D** | custom fireplace design



## AIDAN See-Thru | Suspended Gas Fireplace

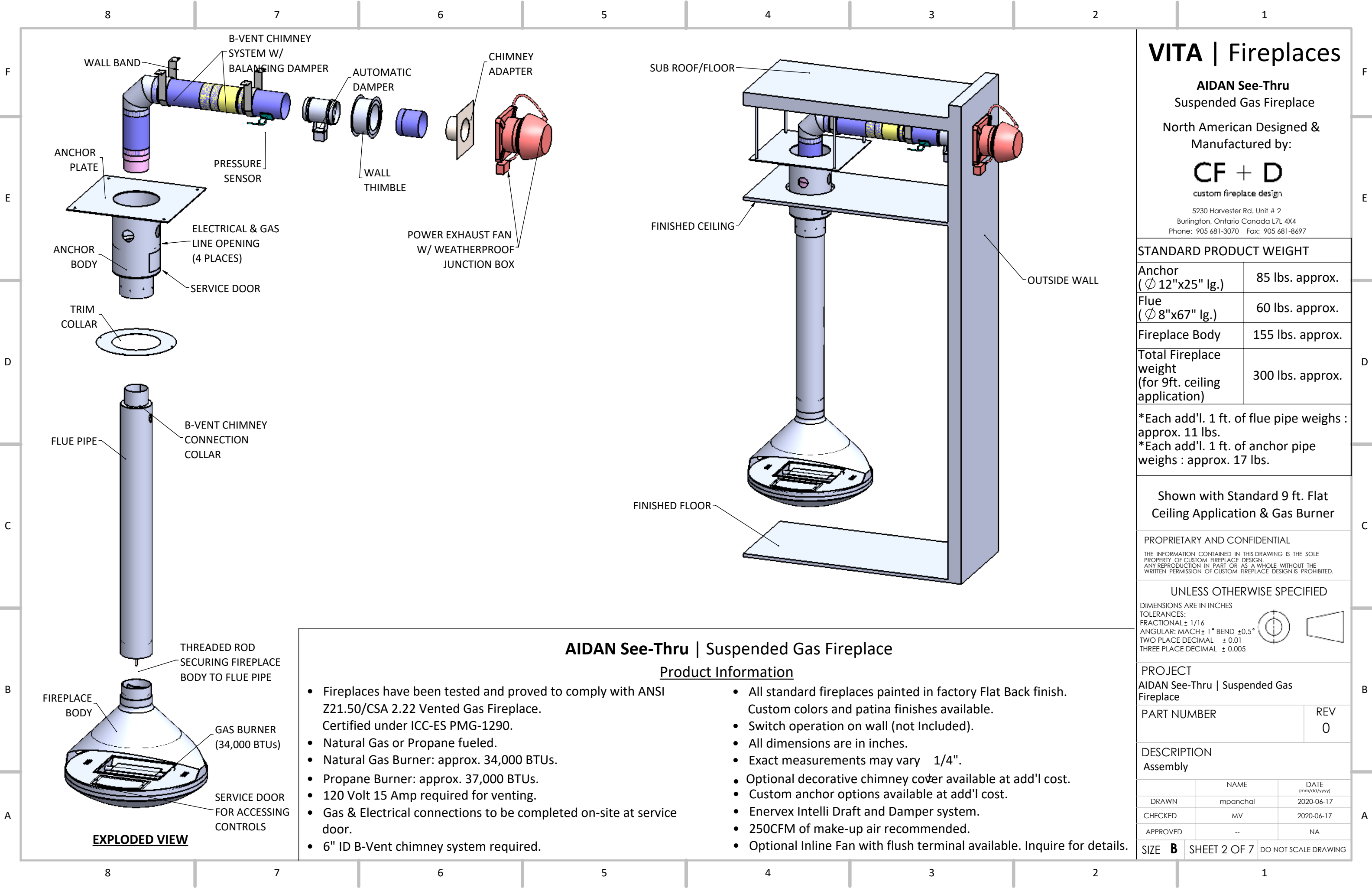


Fireplaces have been tested and proved to comply with ANSI Z21.50/CSA 2.22 Vented Gas Fireplace. Certified under: ICC-ES PMG-1290

### PRODUCT LAYOUT PACKAGE (HORIZONTAL TERMINATION)

2020-06-17

**CF + D** | custom fireplace design  
[www.customfireplacedesign.com](http://www.customfireplacedesign.com)



# VITA | Fireplaces

**AIDAN See-Thru**  
Suspended Gas Fireplace

North American Designed &  
Manufactured by:

**CF + D**  
custom fireplace design

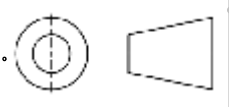
5230 Harvester Rd. Unit # 2  
Burlington, Ontario Canada L7L 4X4  
Phone: 905 681-3070 Fax: 905 681-8697

STANDARD PRODUCT WEIGHT	
Anchor ( Ø 12"x25" lg.)	85 lbs. approx.
Flue ( Ø 8"x67" lg.)	60 lbs. approx.
Fireplace Body	155 lbs. approx.
Total Fireplace weight (for 9ft. ceiling application)	300 lbs. approx.
*Each add'l. 1 ft. of flue pipe weighs : approx. 11 lbs.	
*Each add'l. 1 ft. of anchor pipe weighs : approx. 17 lbs.	

Shown with Standard 9 ft. Flat Ceiling Application & Gas Burner

PROPRIETARY AND CONFIDENTIAL  
THE INFORMATION CONTAINED IN THIS DRAWING IS THE SOLE PROPERTY OF CUSTOM FIREPLACE DESIGN. ANY REPRODUCTION IN PART OR AS A WHOLE WITHOUT THE WRITTEN PERMISSION OF CUSTOM FIREPLACE DESIGN IS PROHIBITED.

UNLESS OTHERWISE SPECIFIED  
DIMENSIONS ARE IN INCHES  
TOLERANCES:  
FRACTIONAL ± 1/16  
ANGULAR: MACH ± 1° BEND ± 0.5°  
TWO PLACE DECIMAL ± 0.01  
THREE PLACE DECIMAL ± 0.005



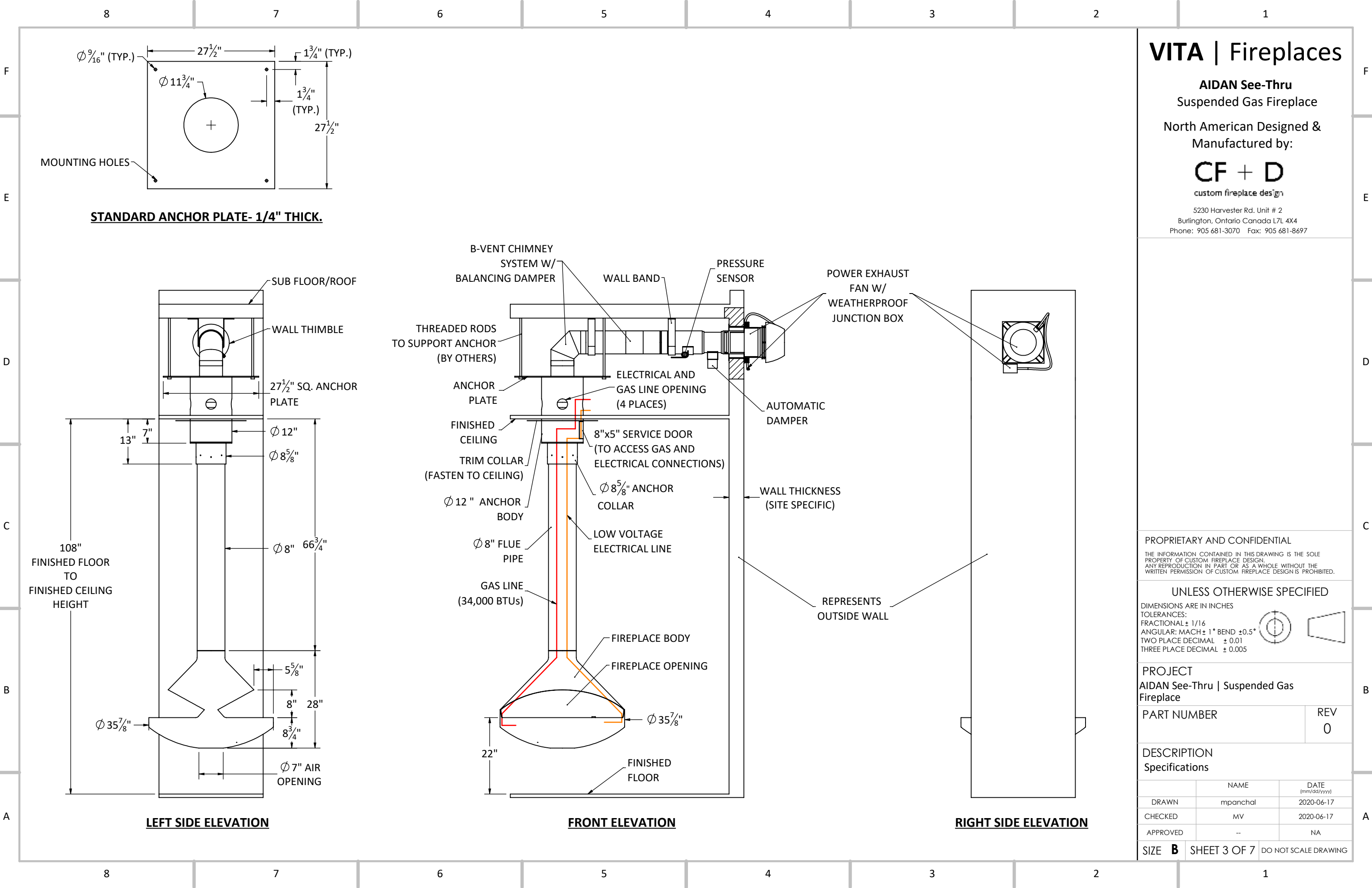
PROJECT		
AIDAN See-Thru   Suspended Gas Fireplace		
PART NUMBER		REV 0
DESCRIPTION		
Assembly		
	NAME	DATE (mm/dd/yyyy)
DRAWN	mpanchal	2020-06-17
CHECKED	MV	2020-06-17
APPROVED	--	NA
SIZE	B	SHEET 2 OF 7
DO NOT SCALE DRAWING		

## AIDAN See-Thru | Suspended Gas Fireplace

### Product Information

- Fireplaces have been tested and proved to comply with ANSI Z21.50/CSA 2.22 Vented Gas Fireplace. Certified under ICC-ES PMG-1290.
- Natural Gas or Propane fueled.
- Natural Gas Burner: approx. 34,000 BTUs.
- Propane Burner: approx. 37,000 BTUs.
- 120 Volt 15 Amp required for venting.
- Gas & Electrical connections to be completed on-site at service door.
- 6" ID B-Vent chimney system required.
- All standard fireplaces painted in factory Flat Back finish. Custom colors and patina finishes available.
- Switch operation on wall (not Included).
- All dimensions are in inches.
- Exact measurements may vary 1/4".
- Optional decorative chimney cover available at add'l cost.
- Custom anchor options available at add'l cost.
- Enervex Intelli Draft and Damper system.
- 250CFM of make-up air recommended.
- Optional Inline Fan with flush terminal available. Inquire for details.

**EXPLODED VIEW**



VITA | Fireplaces

AIDAN See-Thru  
Suspended Gas Fireplace

North American Designed &  
Manufactured by:

CF + D

custom fireplace design

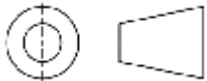
5230 Harvester Rd. Unit # 2  
Burlington, Ontario Canada L7L 4X4  
Phone: 905 681-3070 Fax: 905 681-8697

PROPRIETARY AND CONFIDENTIAL

THE INFORMATION CONTAINED IN THIS DRAWING IS THE SOLE  
PROPERTY OF CUSTOM FIREPLACE DESIGN.  
ANY REPRODUCTION IN PART OR AS A WHOLE WITHOUT THE  
WRITTEN PERMISSION OF CUSTOM FIREPLACE DESIGN IS PROHIBITED.

UNLESS OTHERWISE SPECIFIED

DIMENSIONS ARE IN INCHES  
TOLERANCES:  
FRACTIONAL ± 1/16  
ANGULAR: MACH ± 1° BEND ± 0.5°  
TWO PLACE DECIMAL ± 0.01  
THREE PLACE DECIMAL ± 0.005



PROJECT  
AIDAN See-Thru | Suspended Gas  
Fireplace

PART NUMBER	REV 0
-------------	----------

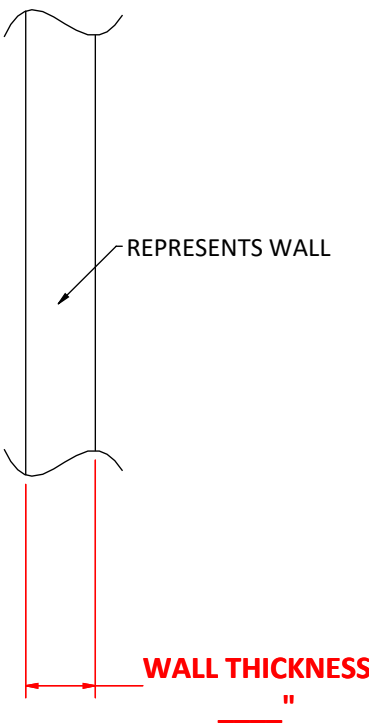
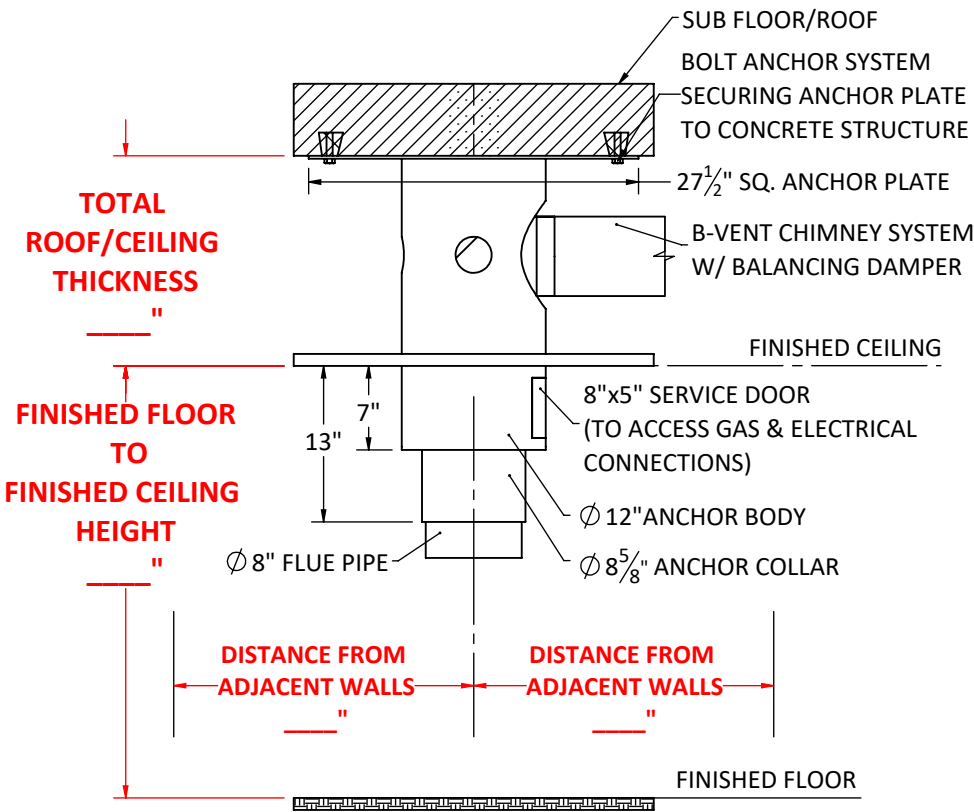
DESCRIPTION  
Specifications

	NAME	DATE (mm/dd/yyyy)
DRAWN	mpanchal	2020-06-17
CHECKED	MV	2020-06-17
APPROVED	--	NA

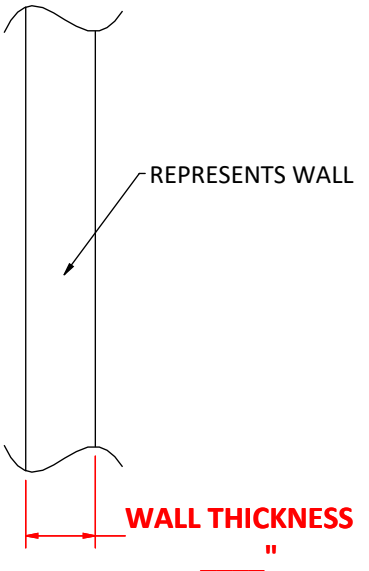
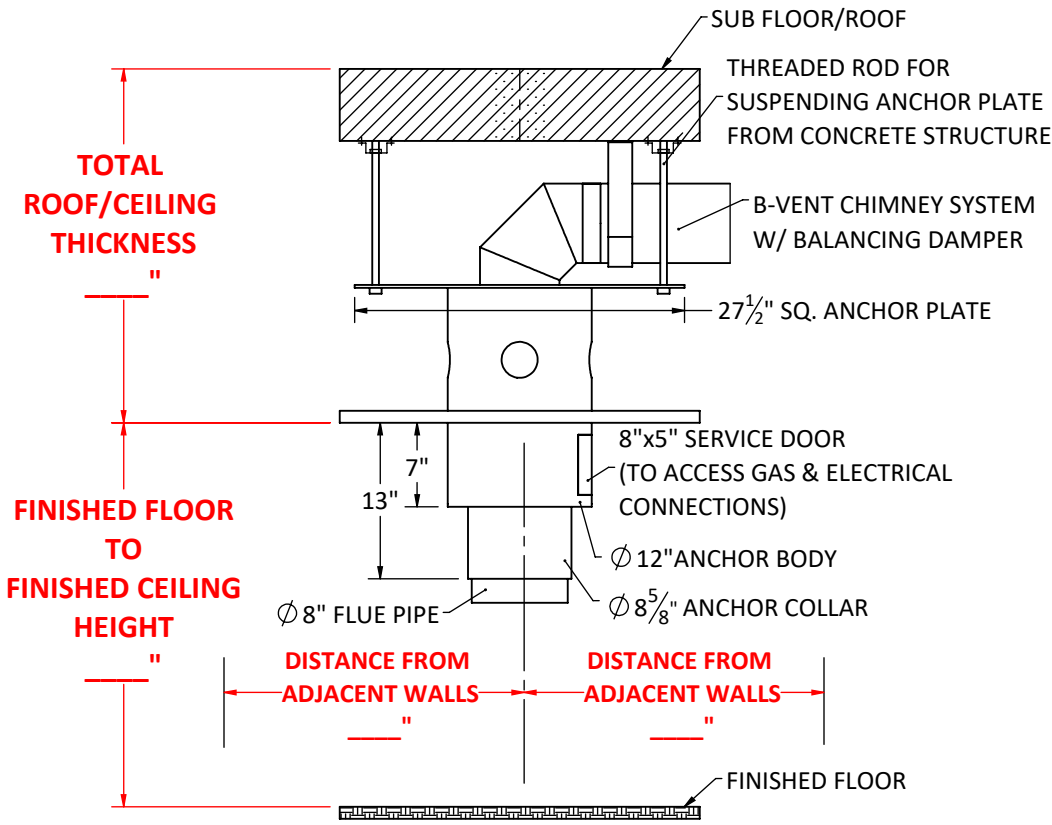
SIZE **B** SHEET 3 OF 7 DO NOT SCALE DRAWING



CUSTOM ANCHOR OPTIONS AVAILABLE (PLEASE FILL IN THE BLANKS AS PER SITE SPECIFIC DETAILS)



OPTION A - ATTACHED BELOW CONCRETE



OPTION B - SUSPENDED FROM CONCRETE

VITA | Fireplaces

AIDAN See-Thru  
Suspended Gas Fireplace

North American Designed &  
Manufactured by:

CF + D  
custom fireplace design

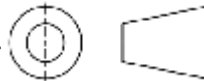
5230 Harvester Rd. Unit # 2  
Burlington, Ontario Canada L7L 4X4  
Phone: 905 681-3070 Fax: 905 681-8697

PROPRIETARY AND CONFIDENTIAL

THE INFORMATION CONTAINED IN THIS DRAWING IS THE SOLE  
PROPERTY OF CUSTOM FIREPLACE DESIGN.  
ANY REPRODUCTION IN PART OR AS A WHOLE WITHOUT THE  
WRITTEN PERMISSION OF CUSTOM FIREPLACE DESIGN IS PROHIBITED.

UNLESS OTHERWISE SPECIFIED

DIMENSIONS ARE IN INCHES  
TOLERANCES:  
FRACTIONAL  $\pm 1/16$   
ANGULAR: MACH  $\pm 1^\circ$  BEND  $\pm 0.5^\circ$   
TWO PLACE DECIMAL  $\pm 0.01$   
THREE PLACE DECIMAL  $\pm 0.005$



PROJECT  
AIDAN See-Thru | Suspended Gas  
Fireplace

PART NUMBER	REV 0
-------------	----------

DESCRIPTION  
Anchor Options

	NAME	DATE (mm/dd/yyyy)
DRAWN	mpanchal	2020-06-17
CHECKED	MV	2020-06-17
APPROVED	--	NA

SIZE **B** SHEET 4 OF 7 DO NOT SCALE DRAWING



TYPICAL VITA GAS ENERVEX ELECTRICAL DIAGRAM

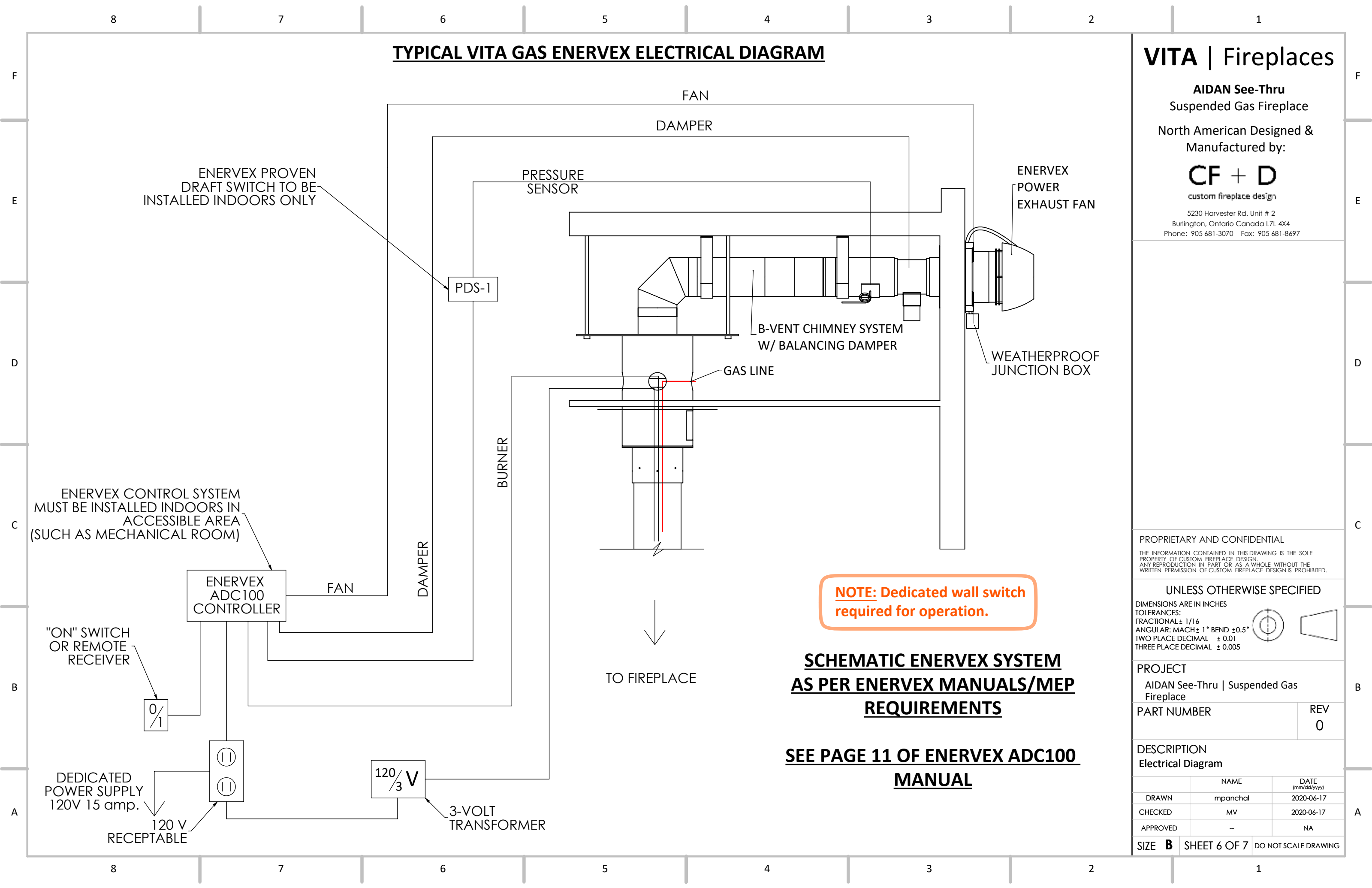
VITA | Fireplaces

AIDAN See-Thru  
Suspended Gas Fireplace

North American Designed &  
Manufactured by:

CF + D  
custom fireplace design

5230 Harvester Rd. Unit # 2  
Burlington, Ontario Canada L7L 4X4  
Phone: 905 681-3070 Fax: 905 681-8697

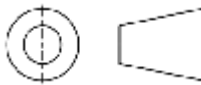


PROPRIETARY AND CONFIDENTIAL

THE INFORMATION CONTAINED IN THIS DRAWING IS THE SOLE  
PROPERTY OF CUSTOM FIREPLACE DESIGN.  
ANY REPRODUCTION IN PART OR AS A WHOLE WITHOUT THE  
WRITTEN PERMISSION OF CUSTOM FIREPLACE DESIGN IS PROHIBITED.

UNLESS OTHERWISE SPECIFIED

DIMENSIONS ARE IN INCHES  
TOLERANCES:  
FRACTIONAL:  $\pm 1/16$   
ANGULAR: MACH  $\pm 1^\circ$  BEND  $\pm 0.5^\circ$   
TWO PLACE DECIMAL  $\pm 0.01$   
THREE PLACE DECIMAL  $\pm 0.005$



PROJECT  
AIDAN See-Thru | Suspended Gas  
Fireplace

PART NUMBER  
REV  
0

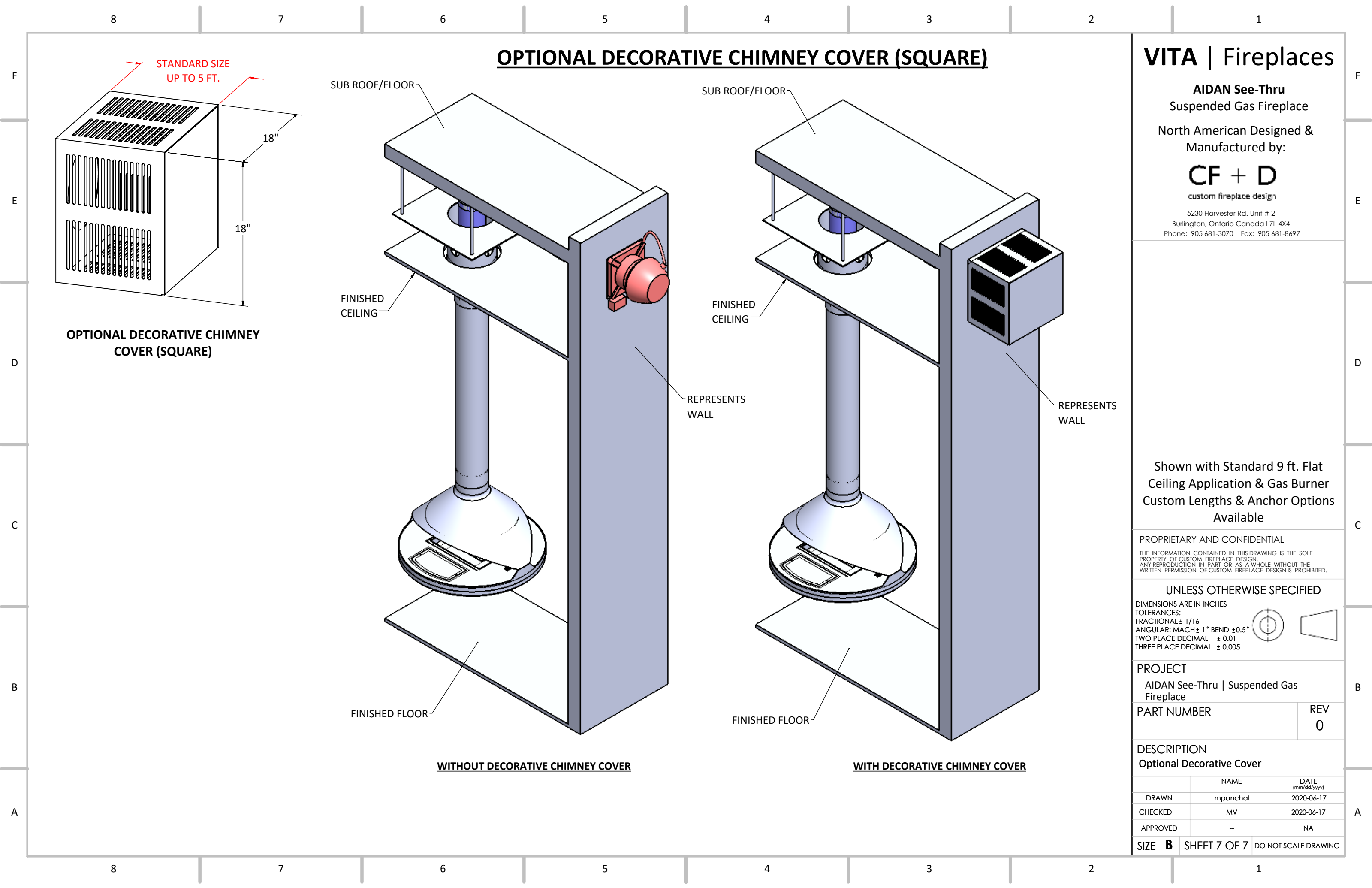
DESCRIPTION  
Electrical Diagram

	NAME	DATE (mm/dd/yyyy)
DRAWN	mpanchal	2020-06-17
CHECKED	MV	2020-06-17
APPROVED	--	NA

SIZE **B** SHEET 6 OF 7 DO NOT SCALE DRAWING

**SCHEMATIC ENERVEX SYSTEM  
AS PER ENERVEX MANUALS/MEP  
REQUIREMENTS**

**SEE PAGE 11 OF ENERVEX ADC100  
MANUAL**



VITA | Fireplaces

AIDAN See-Thru  
Suspended Gas Fireplace

North American Designed &  
Manufactured by:

CF + D  
custom fireplace design

5230 Harvester Rd. Unit # 2  
Burlington, Ontario Canada L7L 4X4  
Phone: 905 681-3070 Fax: 905 681-8697

Shown with Standard 9 ft. Flat  
Ceiling Application & Gas Burner  
Custom Lengths & Anchor Options  
Available

PROPRIETARY AND CONFIDENTIAL  
THE INFORMATION CONTAINED IN THIS DRAWING IS THE SOLE  
PROPERTY OF CUSTOM FIREPLACE DESIGN.  
ANY REPRODUCTION IN PART OR AS A WHOLE WITHOUT THE  
WRITTEN PERMISSION OF CUSTOM FIREPLACE DESIGN IS PROHIBITED.

UNLESS OTHERWISE SPECIFIED  
DIMENSIONS ARE IN INCHES  
TOLERANCES:  
FRACTIONAL ± 1/16  
ANGULAR: MACH ± 1° BEND ± 0.5°  
TWO PLACE DECIMAL ± 0.01  
THREE PLACE DECIMAL ± 0.005

PROJECT		
AIDAN See-Thru   Suspended Gas Fireplace		
PART NUMBER	REV	0

DESCRIPTION		
Optional Decorative Cover		
	NAME	DATE (mm/dd/yyyy)
DRAWN	mpanchal	2020-06-17
CHECKED	MV	2020-06-17
APPROVED	--	NA
SIZE	B	SHEET 7 OF 7
DO NOT SCALE DRAWING		