

VITA | Fireplaces

North American Designed & Manufactured by **CF + D** | custom fireplace design



AIDAN | See-Thru

Suspended Fireplace with Vapor-Fire Burner

LAYOUT DRAWING

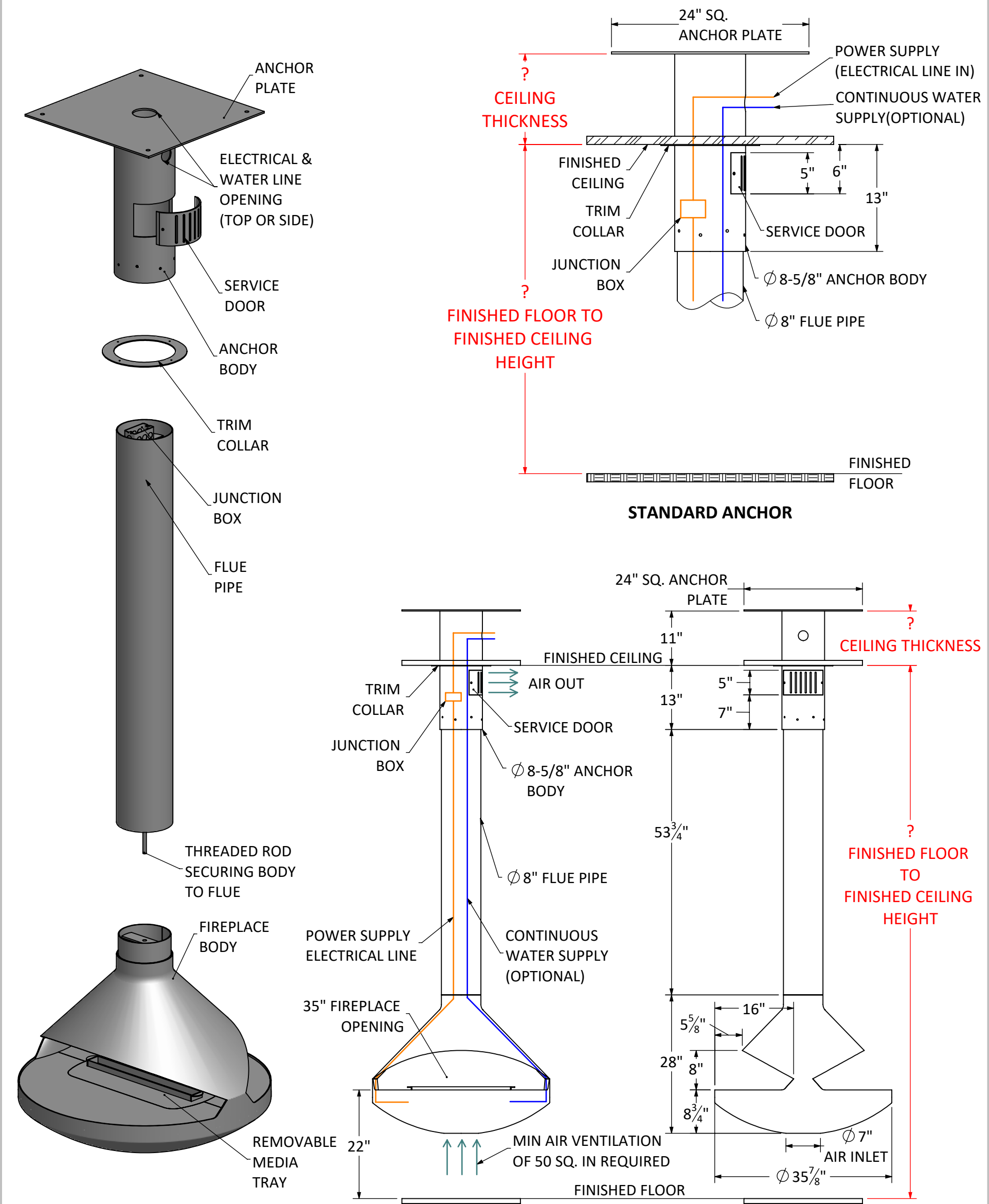
2/22/19

CF + D | custom fireplace design

www.customfireplacedesign.com

VITA | Fireplaces

AIDAN | See-Thru Suspended Fireplace with Vapor-Fire Burner

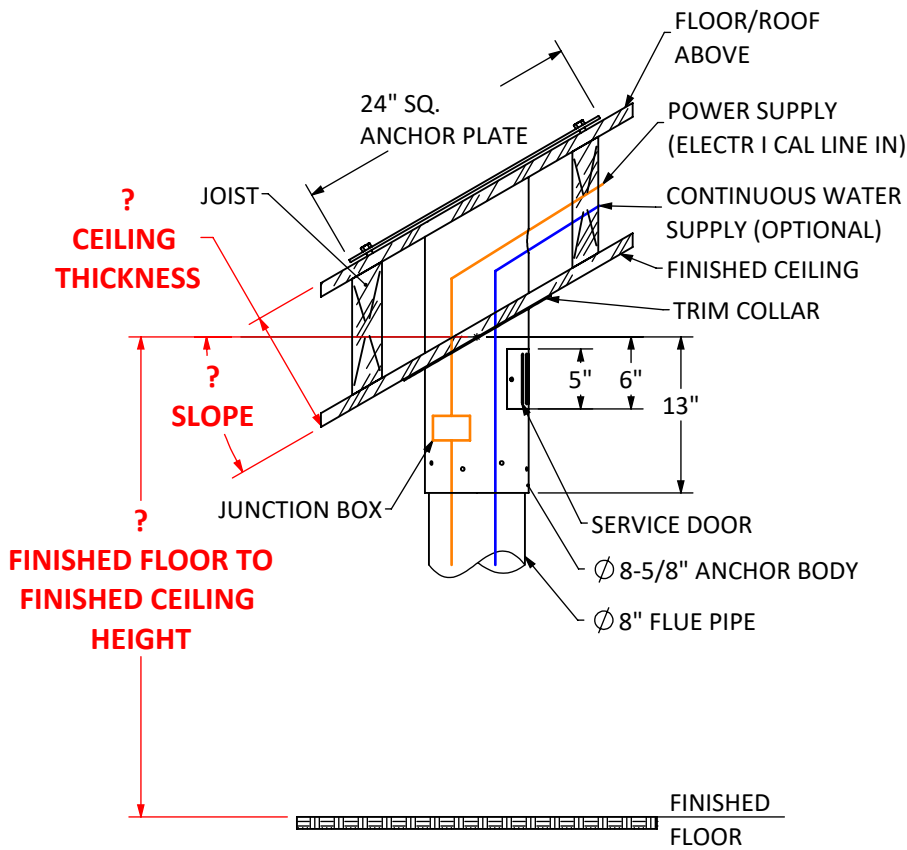


Shown with Standard 9 ft. Flat Ceiling Application
with Vapor-Fire
Custom Lengths & Anchor Options Available

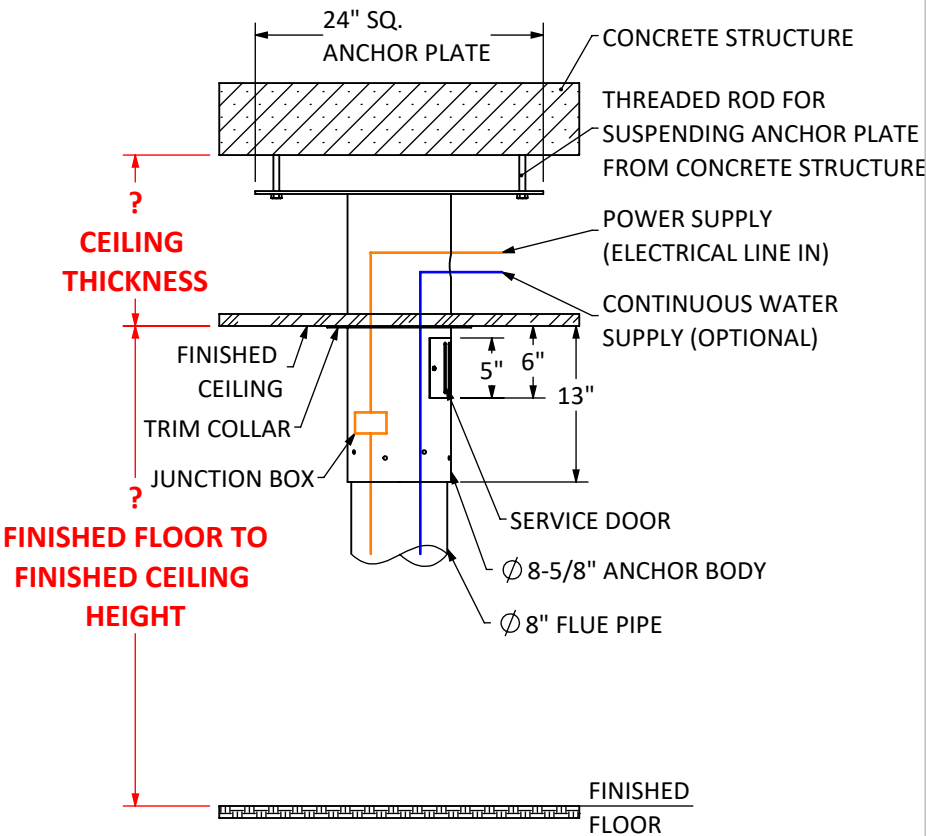
**NOTE: Dedicated wall switch
required for operation.**

Anchor	77 lbs. approx.	UNLESS OTHERWISE SPECIFIED: DIMENSIONS ARE IN INCHES TOLERANCES: FRACTIONAL ± ANGULAR: MACH ± BEND ± TWO PLACE DECIMAL ± THREE PLACE DECIMAL ± INTERPRET GEOMETRIC TOLERANCING PER: MATERIAL FINISH DO NOT SCALE DRAWING		NAME	DATE	MODEL: AIDAN See-Thru			
Flue	58 lbs. approx.		DRAWN	MP	2/22/2019	TITLE: LAYOUT DRAWING			
Fireplace Body	155 lbs. approx.		CHECKED	MV	2/22/2019				
Total Fireplace weight	290 lbs. approx		ENG APPR.						
*Each add'l. 1 ft. of flue pipe weighs: approx. 11 lbs.			MFG APPR.						
PROPRIETARY AND CONFIDENTIAL THE INFORMATION CONTAINED IN THIS DRAWING IS THE SOLE PROPERTY OF CUSTOM FIREPLACE DESIGN INC. ANY REPRODUCTION IN PART OR AS A WHOLE WITHOUT THE WRITTEN PERMISSION OF CUSTOM FIREPLACE DESIGN INC. IS PROHIBITED.			Q.A.			SIZE	DWG. NO.	REV	
			CF + D CUSTOM FIREPLACE DESIGN INC. 5230 HARVESTER RD. UNIT # 2 BURLINGTON, ONTARIO CANADA L7L 4X4 PHONE: 905-681-3070 FAX: 905-681-8697			A	SVF-02	0	
						SCALE: NTS		SHEET 2 OF 3	

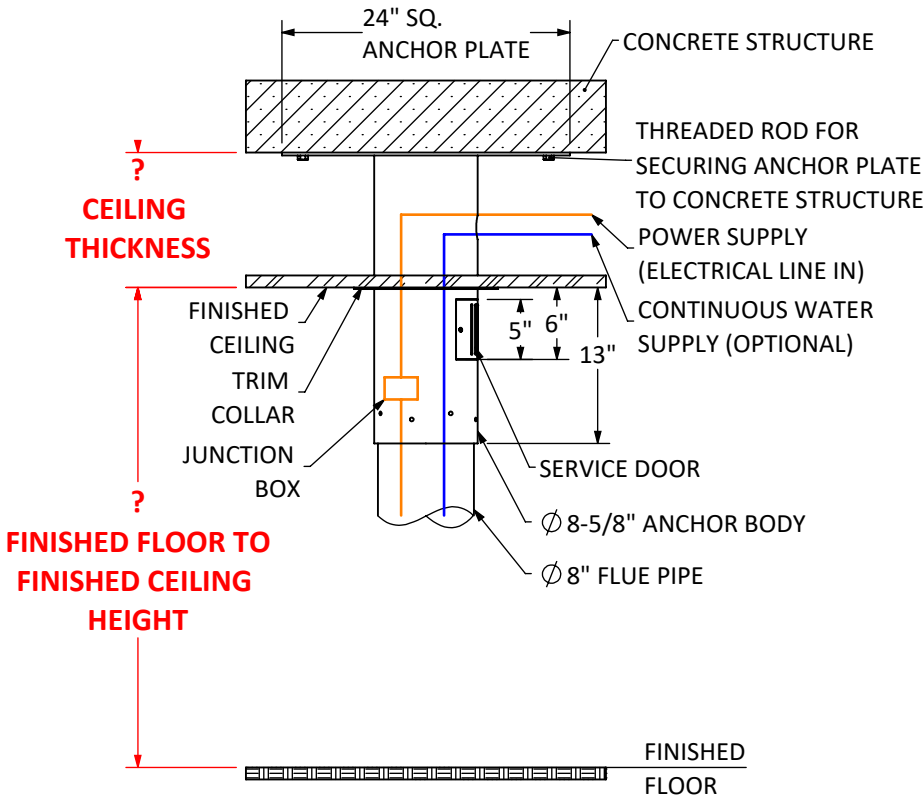
CUSTOM ANCHOR OPTIONS AVAILABLE



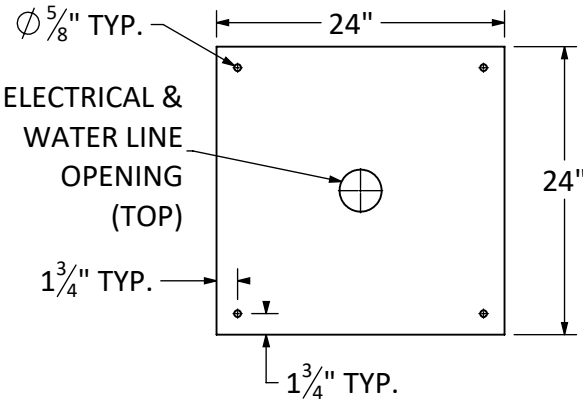
OPTION A - SLOPED DROP FROM ABOVE



OPTION B - SUSPENDED FROM CONCRETE



OPTION C - ATTACHED BELOW CONCRETE



ANCHOR PLATE
24" SQ. x 0.25" THK.

VITA Fireplaces

AIDAN | See-Thru Suspended Fireplace with Vapor-Fire Burner
Product Information

- Vapor-Fire burner technology
- Realistic flame without heat
- No venting requirements
- Safe to the touch
- Fueled by regular tap water (softened/filtered water if required)
- 120 Volt 15 Amp-GFCI
- All fireplaces factory Flat Black finish
- Custom colors and patina finishes available
- Heat available, most models

WATER SOURCE OPTIONS

- OPTION 1: Plumbed-In to main source water line, 1/2" reduced to 1/4" factory set connection.
- OPTION 2: Removable 1L container for manual fill approx. 8-10 hour burn time.

Recommended : Leak detection sensor for potential leak management.

Note: Exact measurements may vary ± 1/2".

North American Designed & Manufactured
by
CF + D | custom fireplace design

PROPRIETARY AND CONFIDENTIAL
THE INFORMATION CONTAINED IN THIS DRAWING IS THE SOLE PROPERTY OF CUSTOM FIREPLACE DESIGN INC.
ANY REPRODUCTION IN PART OR AS A WHOLE WITHOUT THE WRITTEN PERMISSION OF CUSTOM FIREPLACE DESIGN INC.
IS PROHIBITED.

UNLESS OTHERWISE SPECIFIED:		NAME	DATE	MODEL: AIDAN See-Thru		
DIMENSIONS ARE IN INCHES TOLERANCES: FRACTIONAL ± ANGULAR: MACH ± BEND ± TWO PLACE DECIMAL ± THREE PLACE DECIMAL ±	DRAWN	MP	2/22/2019	TITLE: CUSTOM ANCHOR OPTIONS		
	CHECKED	MV	2/22/2019			
	ENG APPR.					
	MFG APPR.					
	Q.A.					
INTERPRET GEOMETRIC TOLERANCING PER:	<div>CF + D</div> <div>CUSTOM FIREPLACE DESIGN INC.</div> <div>5230 HARVESTER RD. UNIT # 2</div> <div>BURLINGTON, ONTARIO CANADA L7L 4X4</div> <div>PHONE: 905-681-3070 FAX: 905-681-8697</div>			SIZE	DWG. NO.	REV
MATERIAL				A	SVF-02	0
FINISH						
DO NOT SCALE DRAWING						
		SCALE : NTS		SHEET 3 OF 3		