

VITA | Fireplaces

North American Designed & Manufactured by **CF + D** | custom fireplace design



AIDAN Single-Sided | Suspended Gas Fireplace

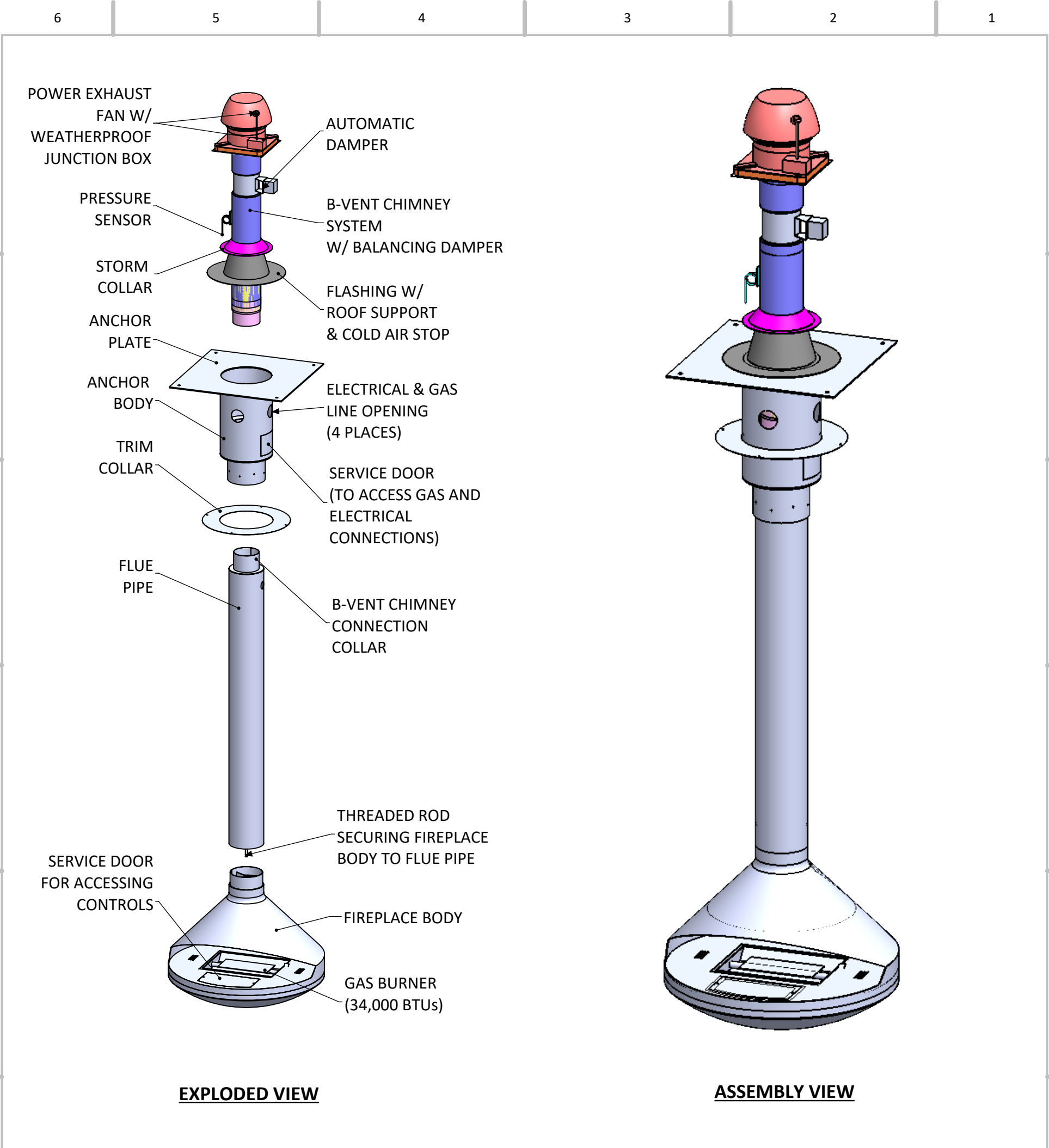


Fireplaces have been tested and proved to comply with ANSI Z21.50/CSA 2.22
Vented Gas Fireplace. Certified under: ICC-ES PMG-1290

PRODUCT LAYOUT PACKAGE (VERTICAL TERMINATION)

2020-06-15

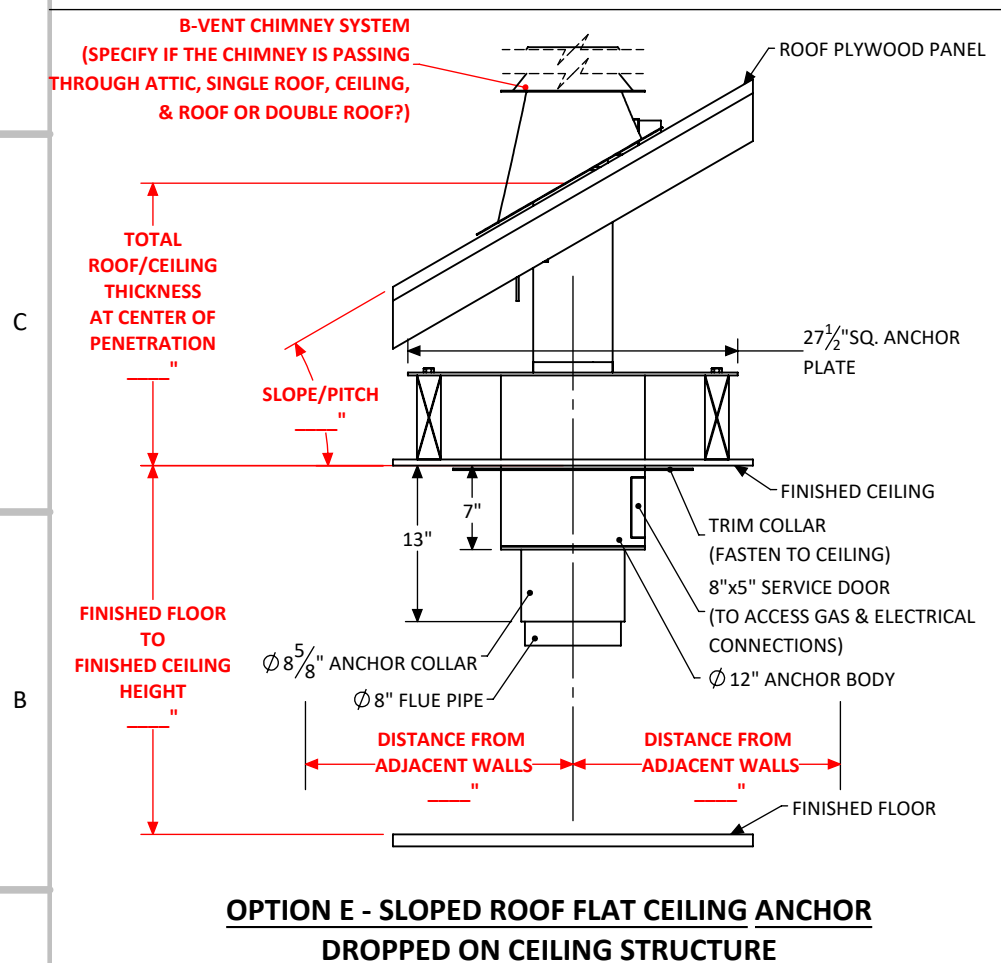
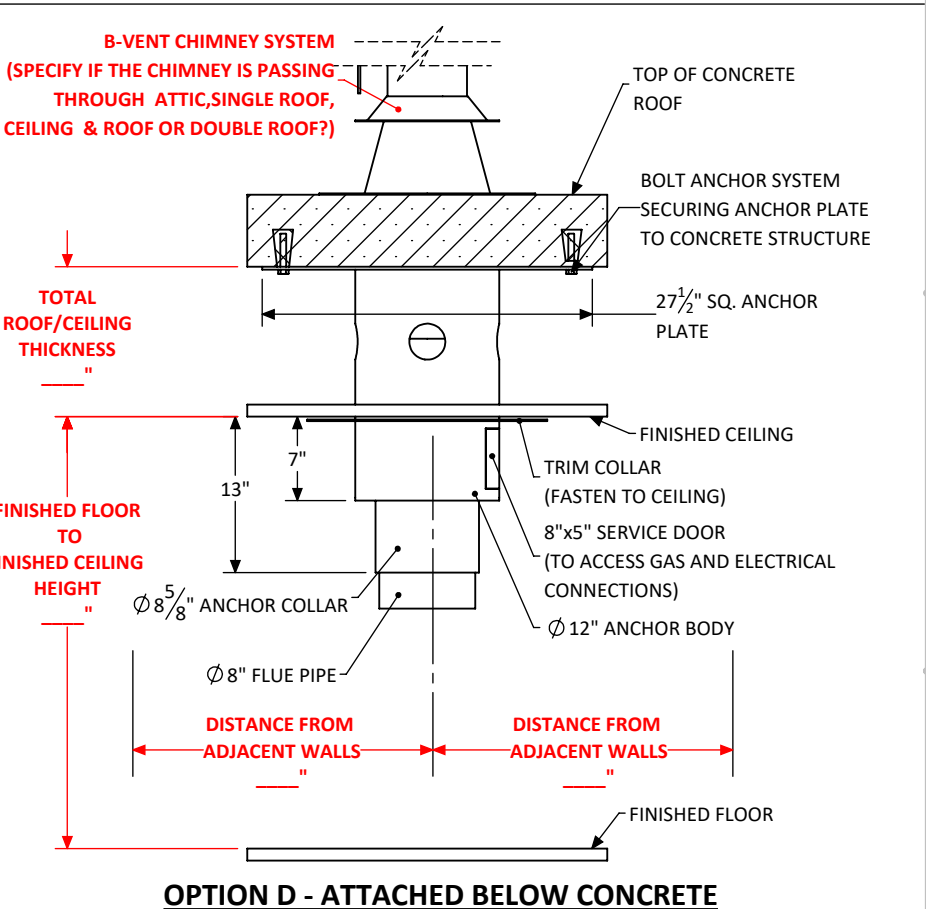
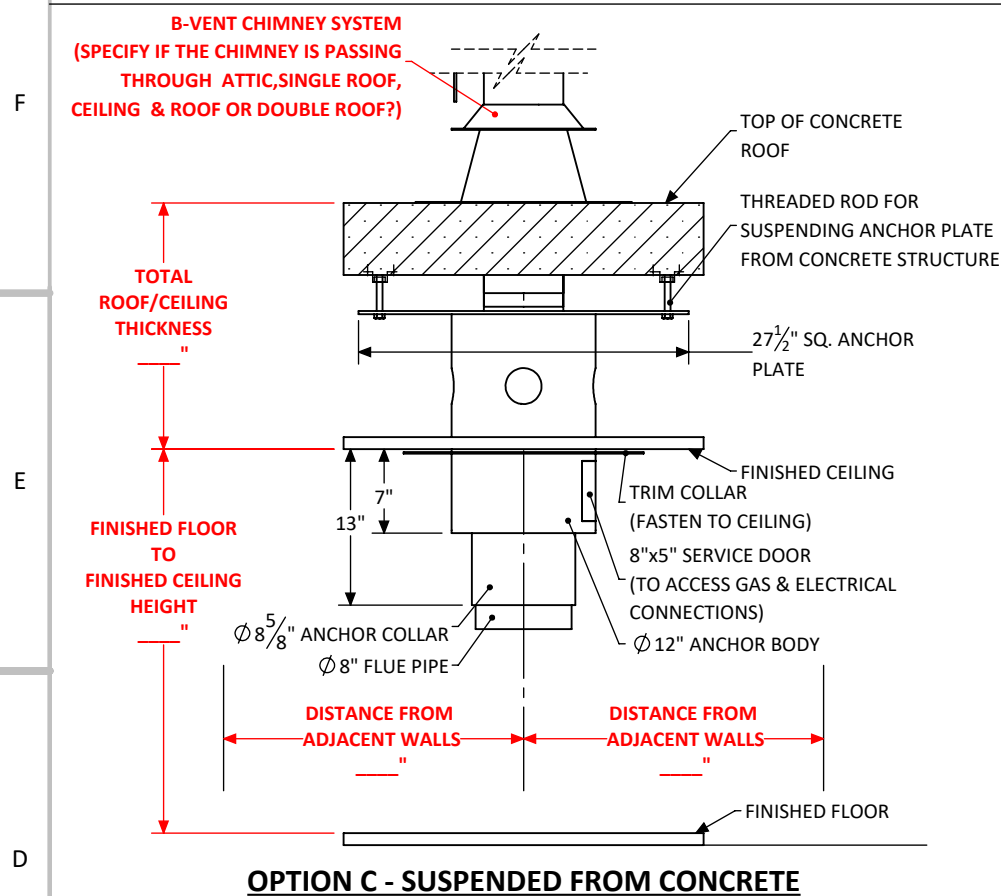
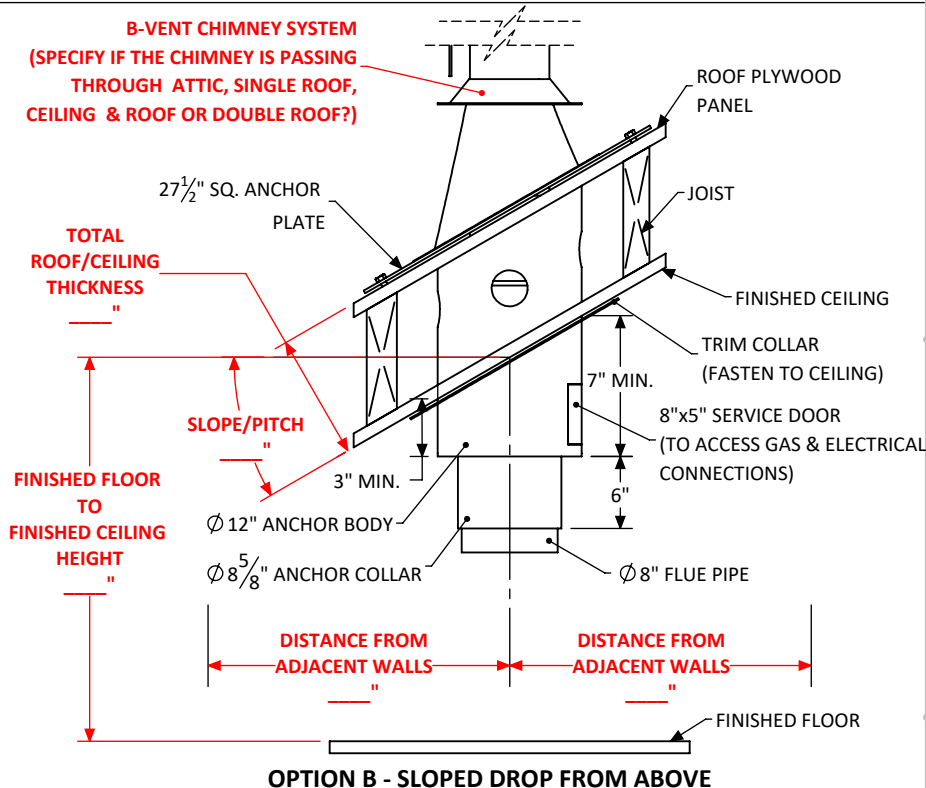
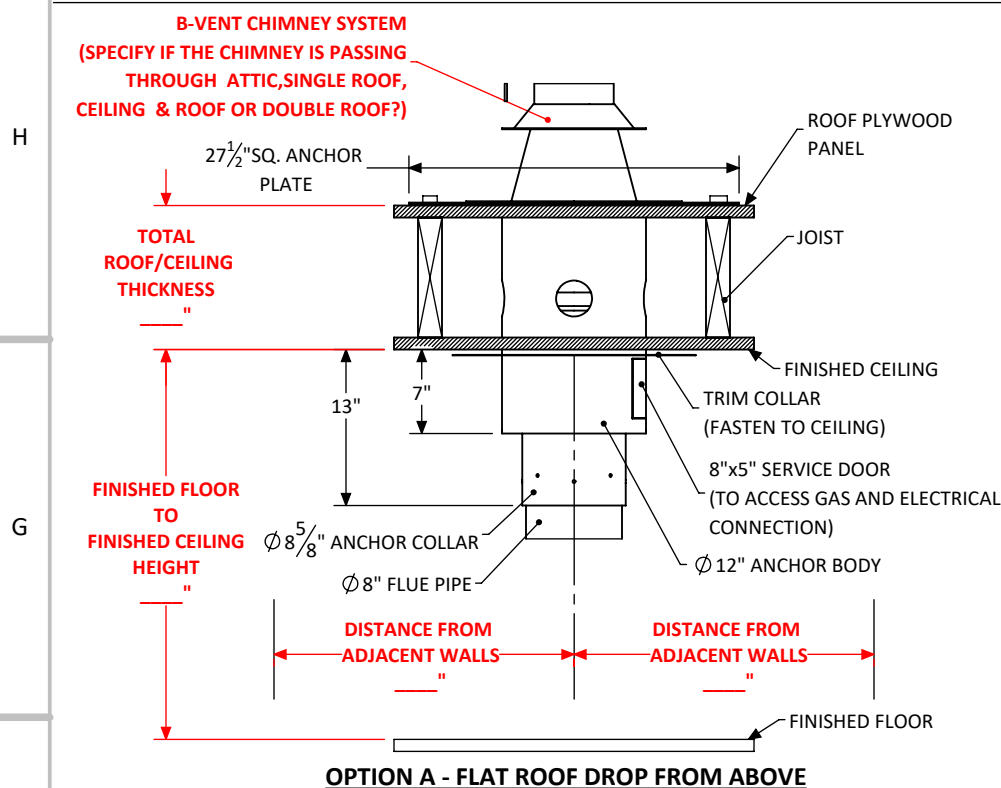
CF + D | custom fireplace design
www.customfireplacedesign.com



<div><div>AIDAN Single-Sided Suspended Gas Fireplace</div><div>Product Information</div><div><div><div><div><div>•</div><div>Fireplaces have been tested and proved to comply with ANSI Z21.50/CSA 2.22 Vented Gas Fireplace. Certified under: ICC-ES PMG-1290.</div></div><div><div>•</div><div>Natural Gas or Propane fueled.</div></div><div><div>•</div><div>Natural Gas Burner: approx. 34,000 BTUs.</div></div><div><div>•</div><div>Propane Burner: approx. 37,000 BTUs.</div></div><div><div>•</div><div>120 Volt 15 Amp required for venting.</div></div><div><div>•</div><div>Gas & Electrical connections to be completed on-site at service door.</div></div><div><div>•</div><div>6" ID B-Vent chimney system required.</div></div><div><div>•</div><div>All standard fireplaces painted in factory Flat Black finish. Custom colors and patina finishes available.</div></div><div><div>•</div><div>Switch operation on wall (not included).</div></div><div><div>•</div><div>All dimensions are in inches.</div></div><div><div>•</div><div>Exact measurements may vary 1/4".</div></div><div><div>•</div><div>Optional decorative chimney cover available at add'l cost.</div></div></div><div><div><div>•</div><div>Custom anchor options available at add'l cost.</div></div><div><div>•</div><div>Energex Intelli Draft and Damper System.</div></div><div><div>•</div><div>250CFM of make-up air recommended.</div></div><div><div>•</div><div>The height of the chimney vent must extend a minimum of 2 ft. above the roof exit.</div></div></div></div></div></div>																																															
<table><tr><th colspan="3">STANDARD PRODUCT WEIGHTS</th></tr><tr><th>SR. NO.</th><th>COMPONENT REFERENCE</th><th>WEIGHT</th></tr><tr><td>1</td><td>ANCHOR (ϕ 12" x 25" Long)</td><td>85 lbs. approx.</td></tr><tr><td>2</td><td>FLUE (ϕ 8" x 67" Long)</td><td>60 lbs. approx.</td></tr><tr><td>3</td><td>FIREPLACE BODY</td><td>165 lbs. approx.</td></tr><tr><td colspan="2">TOTAL FIREPLACE WEIGHT (FOR 9 FT. CEILING APPLICATION)</td><td>310 lbs. approx.</td></tr><tr><td colspan="3">*Each add'l. 1 ft. of flue pipe weighs : approx. 11 lbs.</td></tr><tr><td colspan="3">*Each add'l. 1 ft. of anchor pipe weighs : approx. 17 lbs.</td></tr></table>			STANDARD PRODUCT WEIGHTS			SR. NO.	COMPONENT REFERENCE	WEIGHT	1	ANCHOR (ϕ 12" x 25" Long)	85 lbs. approx.	2	FLUE (ϕ 8" x 67" Long)	60 lbs. approx.	3	FIREPLACE BODY	165 lbs. approx.	TOTAL FIREPLACE WEIGHT (FOR 9 FT. CEILING APPLICATION)		310 lbs. approx.	*Each add'l. 1 ft. of flue pipe weighs : approx. 11 lbs.			*Each add'l. 1 ft. of anchor pipe weighs : approx. 17 lbs.																							
STANDARD PRODUCT WEIGHTS																																															
SR. NO.	COMPONENT REFERENCE	WEIGHT																																													
1	ANCHOR (ϕ 12" x 25" Long)	85 lbs. approx.																																													
2	FLUE (ϕ 8" x 67" Long)	60 lbs. approx.																																													
3	FIREPLACE BODY	165 lbs. approx.																																													
TOTAL FIREPLACE WEIGHT (FOR 9 FT. CEILING APPLICATION)		310 lbs. approx.																																													
*Each add'l. 1 ft. of flue pipe weighs : approx. 11 lbs.																																															
*Each add'l. 1 ft. of anchor pipe weighs : approx. 17 lbs.																																															
<div>North American Designed & Manufactured by:</div> <div><div>CF + D</div><div>custom fireplace design</div><div>5230 Harvester Rd. Unit # 2 Burlington, Ontario Canada L7L 4X4</div><div>Phone: 905 681-3070 Fax: 905 681-8697</div></div>		<table><tr><td colspan="2">PROJECT</td><td>REV</td></tr><tr><td colspan="2">AIDAN Single-Sided Suspended Gas Fireplace</td><td>0</td></tr><tr><td colspan="2">UNLESS OTHERWISE SPECIFIED</td><td>DESCRIPTION</td></tr><tr><td colspan="2">DIMENSIONS ARE IN INCHES</td><td>Assembly View</td></tr><tr><td colspan="2">TOLERANCES:</td><td>NAME</td></tr><tr><td colspan="2">FRACTIONAL \pm 1/16</td><td>DATE</td></tr><tr><td colspan="2">ANGULAR: MACH \pm 1° BEND \pm 0.5°</td><td>(mm/dd/yyyy)</td></tr><tr><td colspan="2">TWO PLACE DECIMAL \pm 0.01</td><td>DRAWN</td></tr><tr><td colspan="2">THREE PLACE DECIMAL \pm 0.005</td><td>mpanchal</td></tr><tr><td colspan="2"></td><td>CHECKED</td></tr><tr><td colspan="2"></td><td>MV</td></tr><tr><td colspan="2"></td><td>2020-06-15</td></tr><tr><td colspan="2">SIZE B SHEET 2 OF 7</td><td>APPROVED</td></tr><tr><td colspan="2">DO NOT SCALE DRAWING</td><td>--</td></tr><tr><td colspan="2"></td><td>NA</td></tr></table>	PROJECT		REV	AIDAN Single-Sided Suspended Gas Fireplace		0	UNLESS OTHERWISE SPECIFIED		DESCRIPTION	DIMENSIONS ARE IN INCHES		Assembly View	TOLERANCES:		NAME	FRACTIONAL \pm 1/16		DATE	ANGULAR: MACH \pm 1° BEND \pm 0.5°		(mm/dd/yyyy)	TWO PLACE DECIMAL \pm 0.01		DRAWN	THREE PLACE DECIMAL \pm 0.005		mpanchal			CHECKED			MV			2020-06-15	SIZE B SHEET 2 OF 7		APPROVED	DO NOT SCALE DRAWING		--			NA
PROJECT		REV																																													
AIDAN Single-Sided Suspended Gas Fireplace		0																																													
UNLESS OTHERWISE SPECIFIED		DESCRIPTION																																													
DIMENSIONS ARE IN INCHES		Assembly View																																													
TOLERANCES:		NAME																																													
FRACTIONAL \pm 1/16		DATE																																													
ANGULAR: MACH \pm 1° BEND \pm 0.5°		(mm/dd/yyyy)																																													
TWO PLACE DECIMAL \pm 0.01		DRAWN																																													
THREE PLACE DECIMAL \pm 0.005		mpanchal																																													
		CHECKED																																													
		MV																																													
		2020-06-15																																													
SIZE B SHEET 2 OF 7		APPROVED																																													
DO NOT SCALE DRAWING		--																																													
		NA																																													

PROPRIETARY AND CONFIDENTIAL
THE INFORMATION CONTAINED IN THIS DRAWING IS THE SOLE PROPERTY OF CUSTOM FIREPLACE DESIGN.
ANY REPRODUCTION IN PART OR AS A WHOLE WITHOUT THE WRITTEN PERMISSION OF CUSTOM FIREPLACE DESIGN IS PROHIBITED.

CUSTOM ANCHOR OPTIONS AVAILABLE (PLEASE FILL IN THE BLANKS AS PER SITE SPECIFIC DETAILS)



North American Designed & Manufactured by:

CF + D
custom fireplace design

5230 Harvester Rd. Unit # 2 Burlington, Ontario Canada L7L 4X4
Phone: 905 681-3070 Fax: 905 681-8697

PROPRIETARY AND CONFIDENTIAL

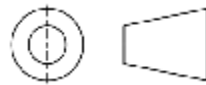
THE INFORMATION CONTAINED IN THIS DRAWING IS THE SOLE PROPERTY OF CUSTOM FIREPLACE DESIGN.
ANY REPRODUCTION IN PART OR AS A WHOLE WITHOUT THE WRITTEN PERMISSION OF CUSTOM FIREPLACE DESIGN IS PROHIBITED.

PROJECT
AIDAN Single-Sided | Suspended Gas Fireplace

REV
0

UNLESS OTHERWISE SPECIFIED

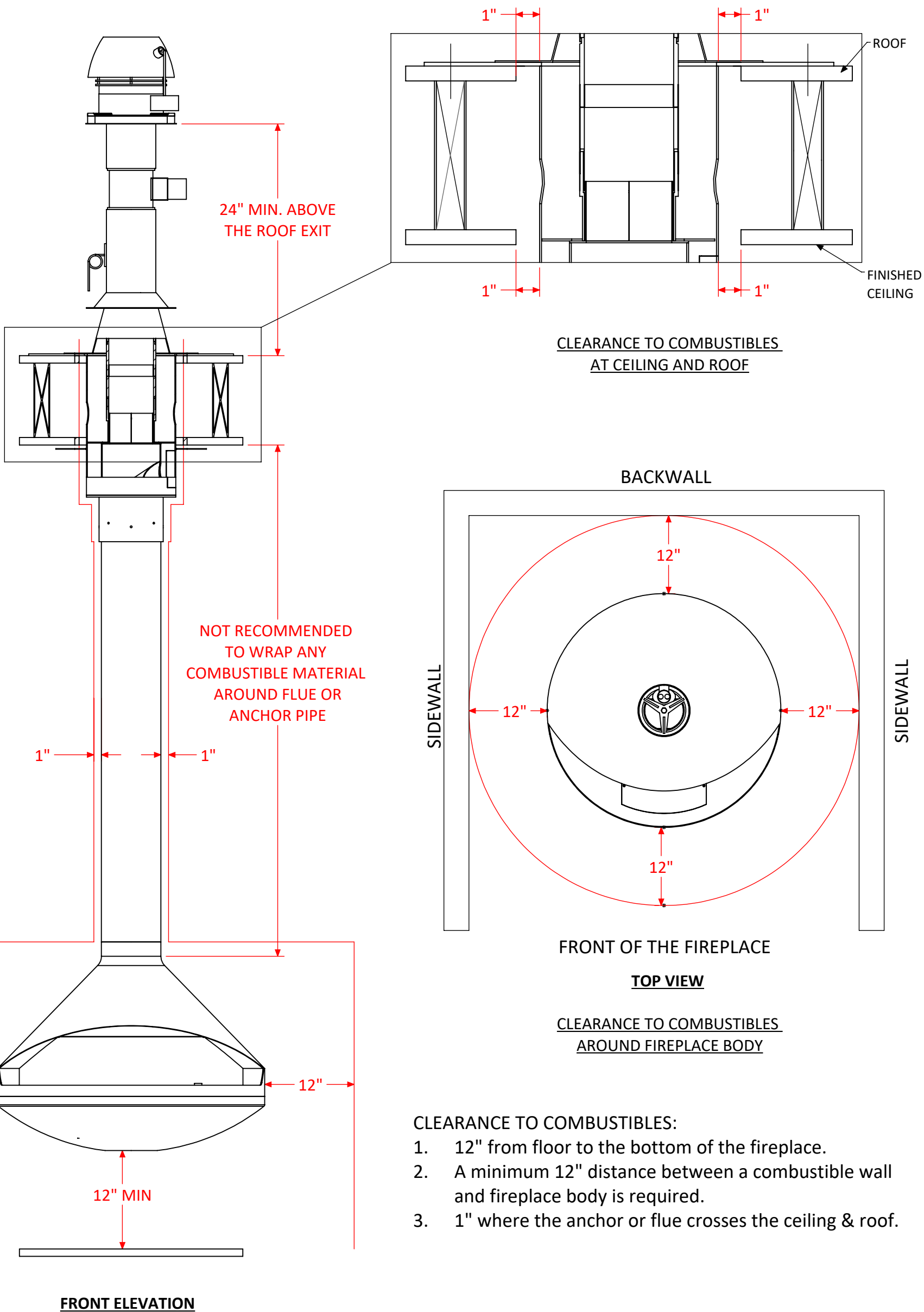
DIMENSIONS ARE IN INCHES
TOLERANCES:
FRACTIONAL $\pm 1/16$
ANGULAR: MACH $\pm 1^\circ$ BEND $\pm 0.5^\circ$
TWO PLACE DECIMAL ± 0.01
THREE PLACE DECIMAL ± 0.005



DESCRIPTION
Anchor Options

	NAME	DATE (mm/dd/yyyy)
DRAWN	pjani	2020-06-21
CHECKED	MV	2020-06-21
APPROVED	--	NA

CLEARANCE TO COMBUSTIBLES



- CLEARANCE TO COMBUSTIBLES:
- 1. 12" from floor to the bottom of the fireplace.
 - 2. A minimum 12" distance between a combustible wall and fireplace body is required.
 - 3. 1" where the anchor or flue crosses the ceiling & roof.

North American Designed & Manufactured by:

CF + D
custom fireplace design

5230 Harvester Rd. Unit # 2 Burlington, Ontario Canada L7L 4X4
Phone: 905 681-3070 Fax: 905 681-8697

PROJECT

AIDAN Single-Sided | Suspended Gas Fireplace

REV

0

UNLESS OTHERWISE SPECIFIED

DIMENSIONS ARE IN INCHES
TOLERANCES:
FRACTIONAL ± 1/16
ANGULAR: MACH ± 1° BEND ± 0.5°
TWO PLACE DECIMAL ± 0.01
THREE PLACE DECIMAL ± 0.005



DESCRIPTION

Clearance to Combustibles

	NAME	DATE (mm/dd/yyyy)
--	------	----------------------

DRAWN	mpanchal	2020-06-15
-------	----------	------------

CHECKED	MV	2020-06-15
---------	----	------------

SIZE B SHEET 5 OF 7

DO NOT SCALE DRAWING

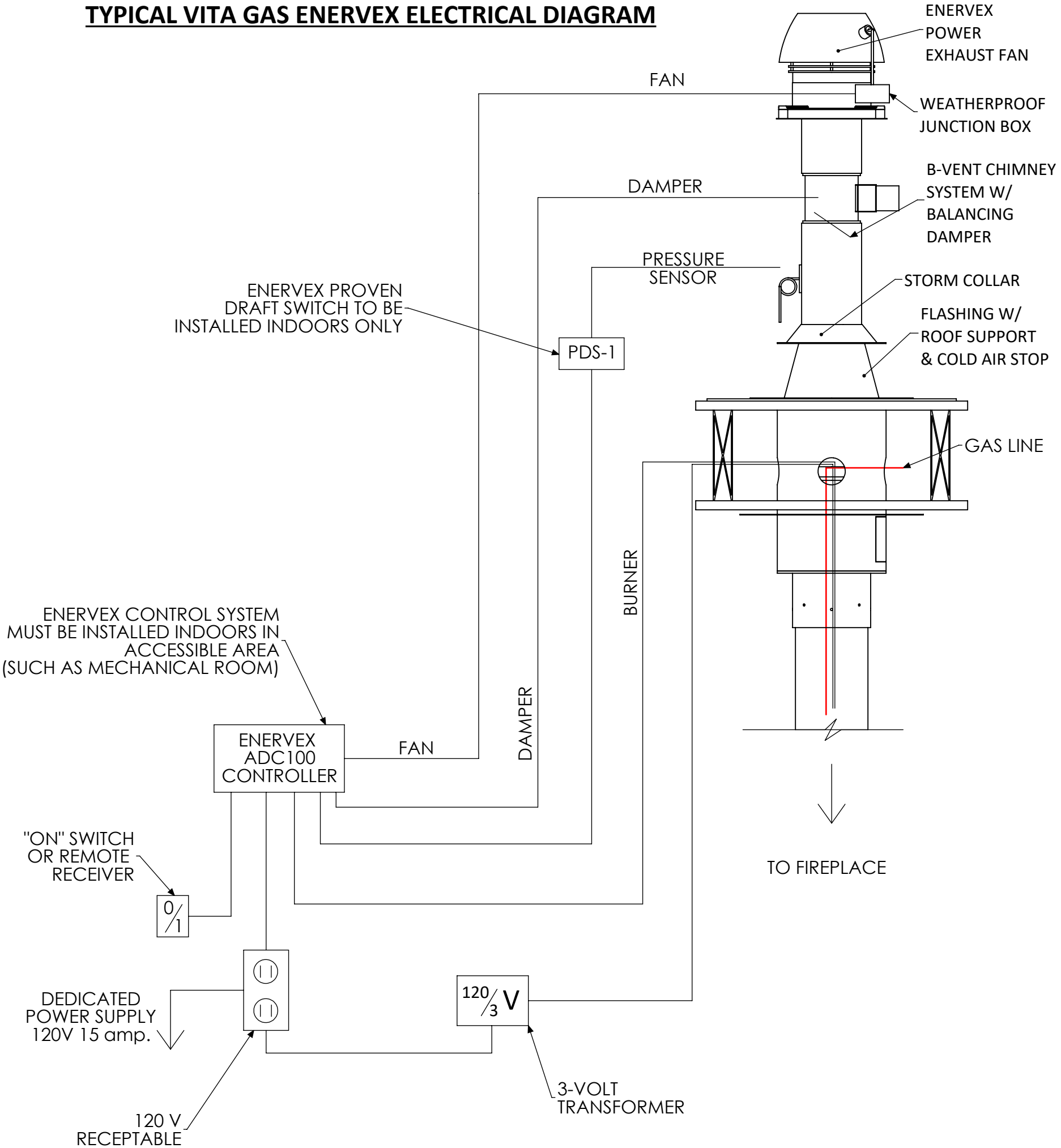
APPROVED

--

NA

PROPRIETARY AND CONFIDENTIAL
THE INFORMATION CONTAINED IN THIS DRAWING IS THE SOLE PROPERTY OF CUSTOM FIREPLACE DESIGN.
ANY REPRODUCTION IN PART OR AS A WHOLE WITHOUT THE WRITTEN PERMISSION OF CUSTOM FIREPLACE DESIGN IS PROHIBITED.

TYPICAL VITA GAS ENERVEX ELECTRICAL DIAGRAM



SCHEMATIC ENERVEX SYSTEM
AS PER ENERVEX MANUALS/MEP
REQUIREMENTS

SEE PAGE 11 OF ENERVEX ADC100
MANUAL

NOTE: Dedicated wall switch
required for operation.

North American Designed & Manufactured by:

CF + D
custom fireplace design

5230 Harvester Rd. Unit # 2 Burlington, Ontario Canada L7L 4X4
Phone: 905 681-3070 Fax: 905 681-8697

PROJECT
AIDAN Single-Sided | Suspended Gas Fireplace

UNLESS OTHERWISE SPECIFIED

DIMENSIONS ARE IN INCHES
TOLERANCES:
FRACTIONAL ± 1/16
ANGULAR: MACH ± 1° BEND ± 0.5°
TWO PLACE DECIMAL ± 0.01
THREE PLACE DECIMAL ± 0.005



DESCRIPTION
Electrical Diagram

	NAME	DATE (mm/dd/yyyy)
DRAWN	mpanchal	2020-06-15
CHECKED	MV	2020-06-15
APPROVED	--	NA

SIZE B SHEET 6 OF 7

DO NOT SCALE DRAWING

REV
0

A

PROPRIETARY AND CONFIDENTIAL
THE INFORMATION CONTAINED IN THIS DRAWING IS THE SOLE PROPERTY OF CUSTOM FIREPLACE DESIGN.
ANY REPRODUCTION IN PART OR AS A WHOLE WITHOUT THE WRITTEN PERMISSION OF CUSTOM FIREPLACE DESIGN IS PROHIBITED.

