

# VITA | Fireplaces

North American Designed & Manufactured by **CF + D** | custom fireplace design



## CALLISTA Single-Sided | Suspended Gas Fireplace



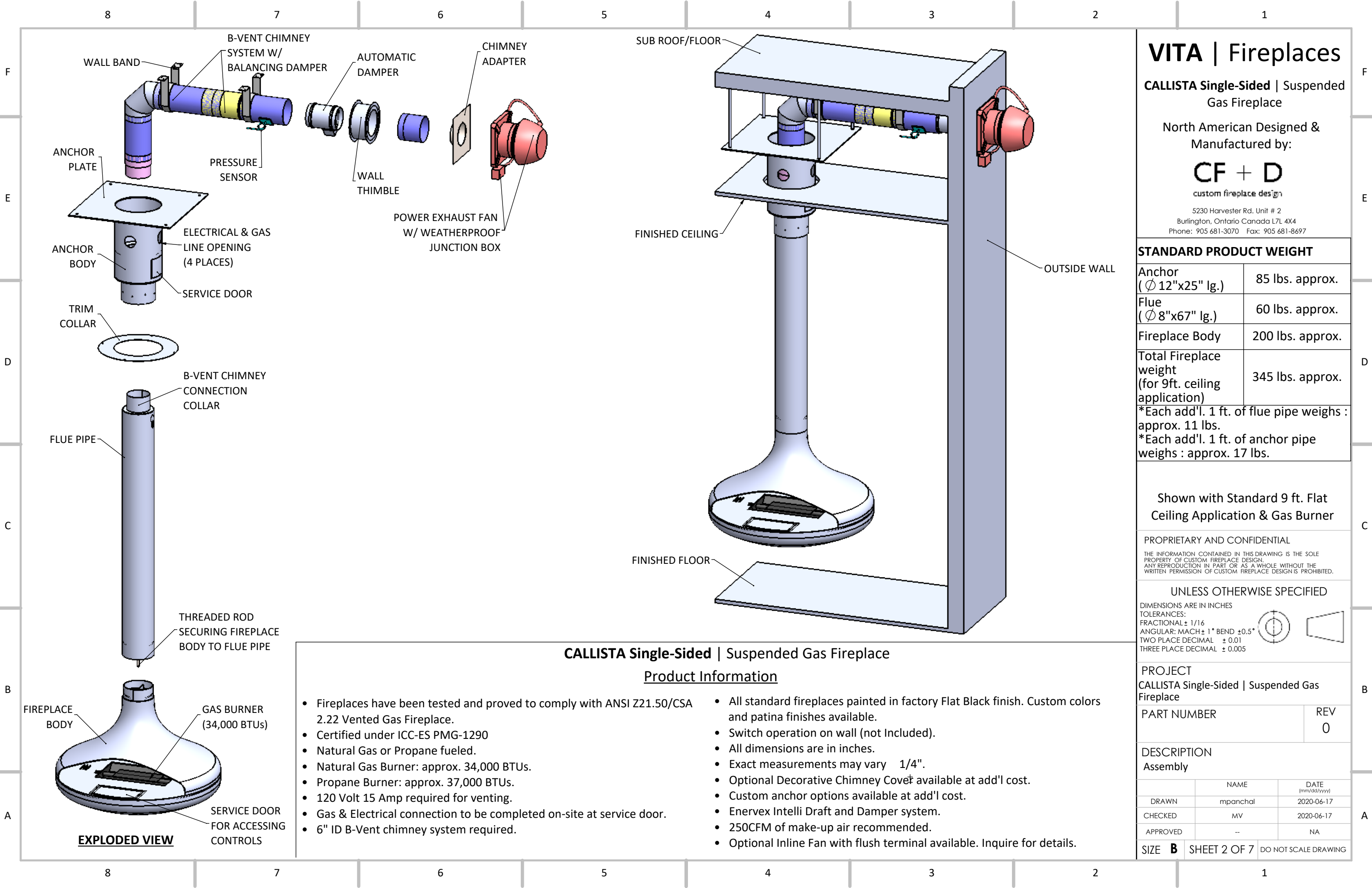
Fireplaces have been tested and proved to comply with ANSI Z21.50/CSA 2.22 Vented Gas Fireplace. Certified under: ICC-ES PMG-1290

### PRODUCT LAYOUT PACKAGE (HORIZONTAL TERMINATION)

2020-06-17

**CF + D** | custom fireplace design  
[www.customfireplacedesign.com](http://www.customfireplacedesign.com)





# VITA | Fireplaces

**CALLISTA Single-Sided | Suspended Gas Fireplace**

North American Designed & Manufactured by:

**CF + D**

custom fireplace design

5230 Harvester Rd. Unit # 2  
Burlington, Ontario Canada L7L 4X4  
Phone: 905 681-3070 Fax: 905 681-8697

## STANDARD PRODUCT WEIGHT

Anchor ( Ø 12"x25" lg.)	85 lbs. approx.
Flue ( Ø 8"x67" lg.)	60 lbs. approx.
Fireplace Body	200 lbs. approx.
Total Fireplace weight (for 9ft. ceiling application)	345 lbs. approx.

\*Each add'l. 1 ft. of flue pipe weighs : approx. 11 lbs.  
\*Each add'l. 1 ft. of anchor pipe weighs : approx. 17 lbs.

Shown with Standard 9 ft. Flat Ceiling Application & Gas Burner

PROPRIETARY AND CONFIDENTIAL  
THE INFORMATION CONTAINED IN THIS DRAWING IS THE SOLE PROPERTY OF CUSTOM FIREPLACE DESIGN. ANY REPRODUCTION IN PART OR AS A WHOLE WITHOUT THE WRITTEN PERMISSION OF CUSTOM FIREPLACE DESIGN IS PROHIBITED.

## UNLESS OTHERWISE SPECIFIED

DIMENSIONS ARE IN INCHES  
TOLERANCES:  
FRACTIONAL: ± 1/16  
ANGULAR: MACH ± 1° BEND ± 0.5°  
TWO PLACE DECIMAL ± 0.01  
THREE PLACE DECIMAL ± 0.005

PROJECT  
CALLISTA Single-Sided | Suspended Gas Fireplace

PART NUMBER	REV 0
-------------	----------

DESCRIPTION  
Assembly

	NAME	DATE (mm/dd/yyyy)
DRAWN	mpanchal	2020-06-17
CHECKED	MV	2020-06-17
APPROVED	--	NA

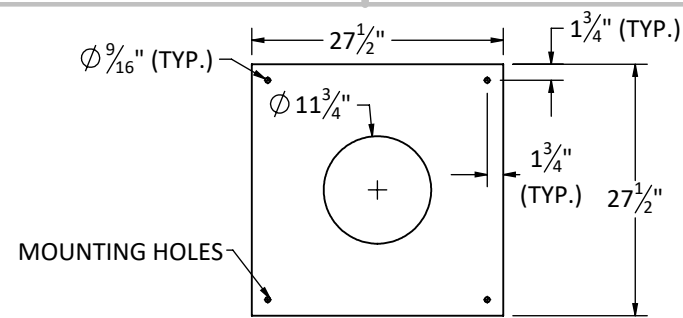
SIZE **B** SHEET 2 OF 7 DO NOT SCALE DRAWING

## CALLISTA Single-Sided | Suspended Gas Fireplace

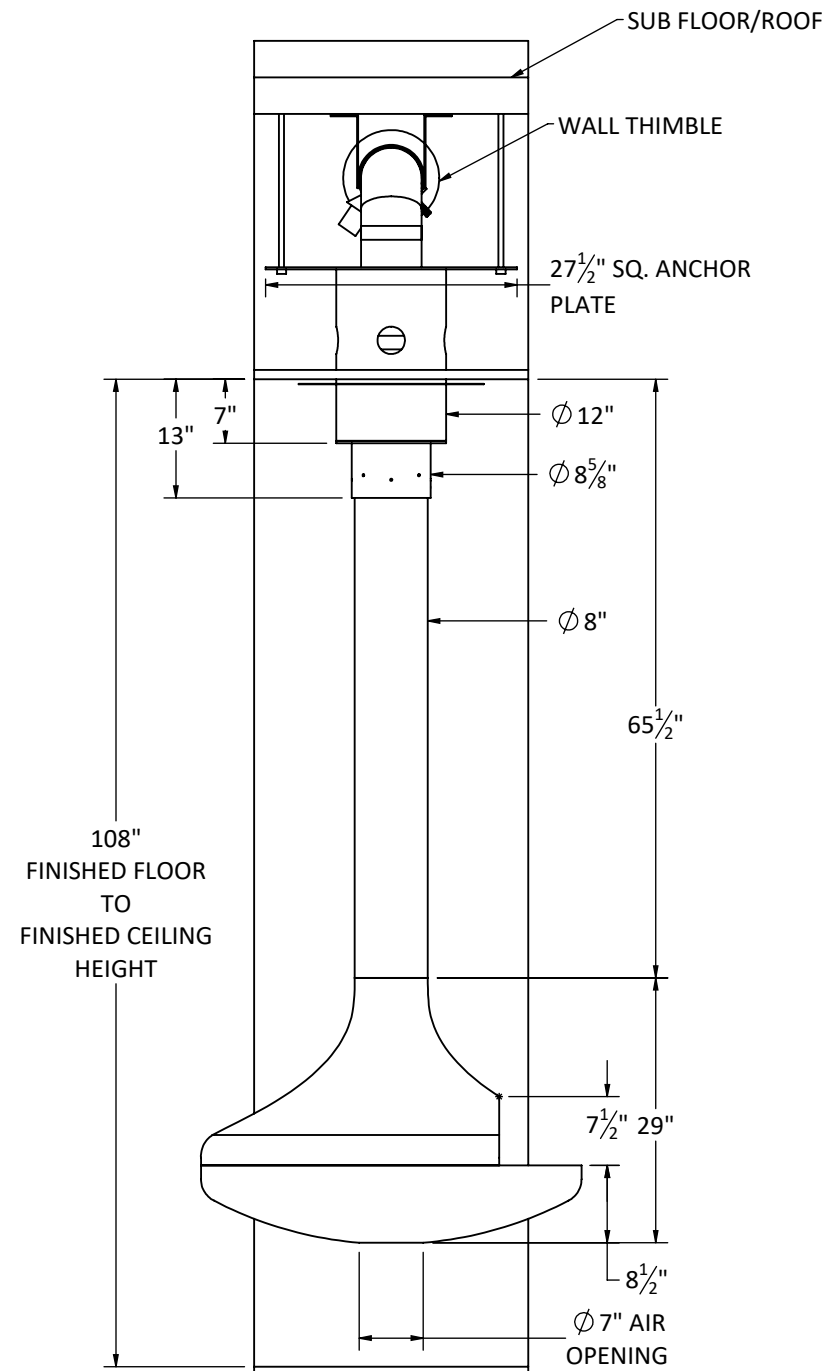
### Product Information

- Fireplaces have been tested and proved to comply with ANSI Z21.50/CSA 2.22 Vented Gas Fireplace.
- Certified under ICC-ES PMG-1290
- Natural Gas or Propane fueled.
- Natural Gas Burner: approx. 34,000 BTUs.
- Propane Burner: approx. 37,000 BTUs.
- 120 Volt 15 Amp required for venting.
- Gas & Electrical connection to be completed on-site at service door.
- 6" ID B-Vent chimney system required.
- All standard fireplaces painted in factory Flat Black finish. Custom colors and patina finishes available.
- Switch operation on wall (not Included).
- All dimensions are in inches.
- Exact measurements may vary 1/4".
- Optional Decorative Chimney Cover available at add'l cost.
- Custom anchor options available at add'l cost.
- Enervex Intelli Draft and Damper system.
- 250CFM of make-up air recommended.
- Optional Inline Fan with flush terminal available. Inquire for details.

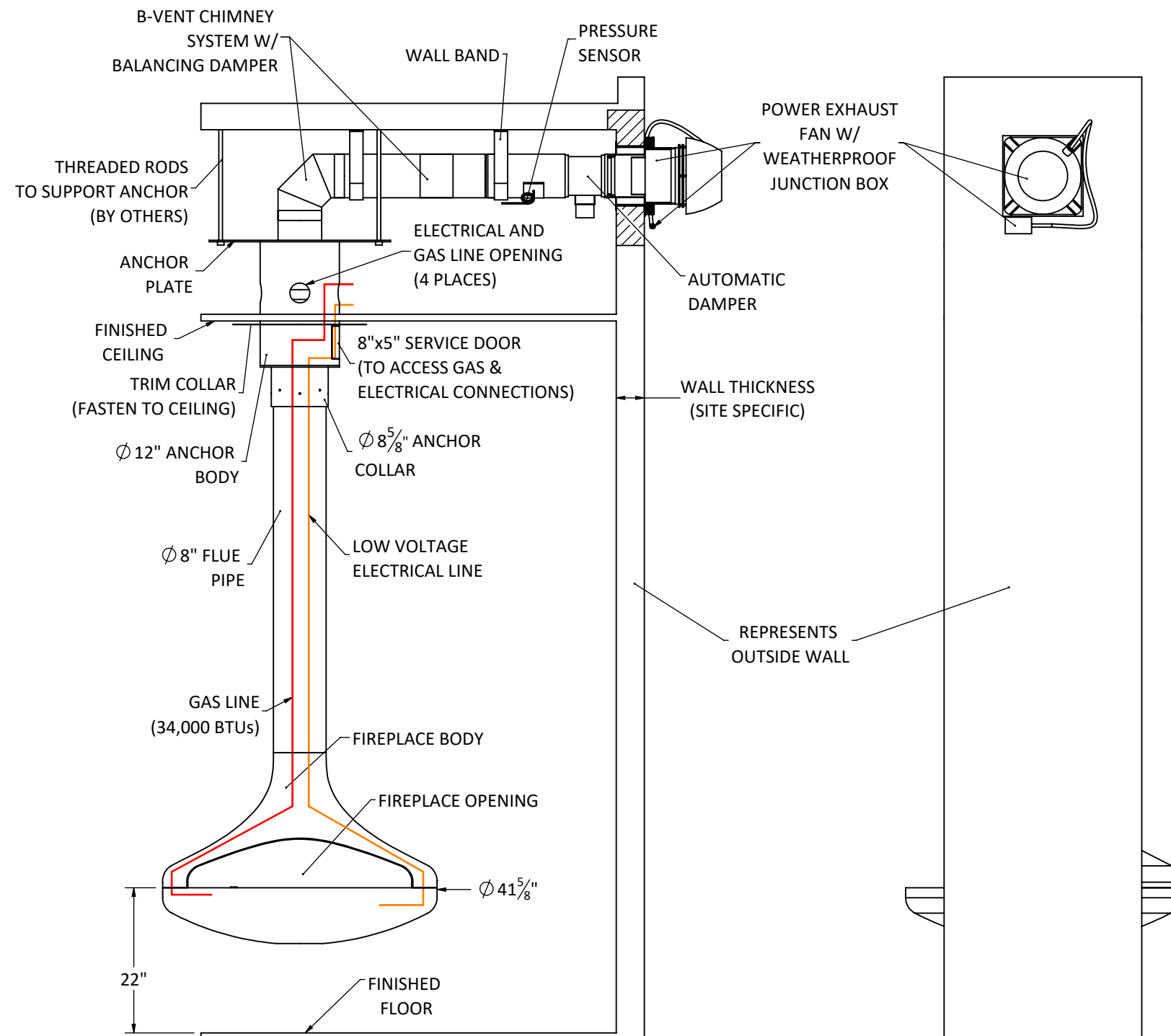
**EXPLODED VIEW**



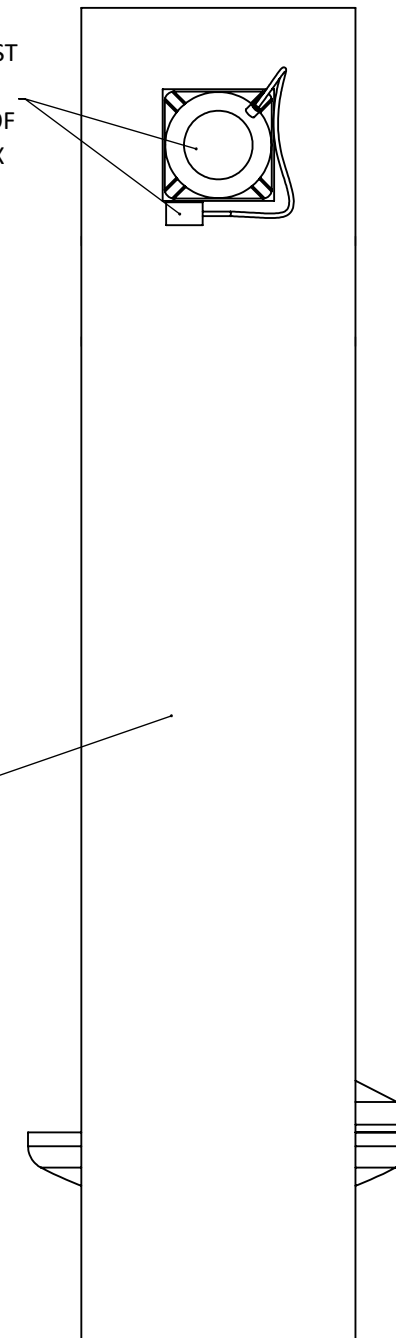
**STANDARD ANCHOR PLATE- 1/4" THICK.**



### LEFT SIDE ELEVATION



**FRONT ELEVATION**



### RIGHT SIDE ELEVATION

## VITA | Fireplaces

**CALLISTA Single-Sided** | Suspended  
Gas Fireplace

North American Designed &  
Manufactured by:

$$CF + D$$

custom fireplace design

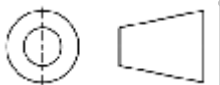
5230 Harvester Rd. Unit # 2  
Burlington, Ontario Canada L7L 4X4  
Phone: 905 681-3070 Fax: 905 681-8697

PROPRIETARY AND CONFIDENTIAL

THE INFORMATION CONTAINED IN THIS DRAWING IS THE SOLE  
PROPERTY OF CUSTOM FIREPLACE DESIGN.  
ANY REPRODUCTION IN PART OR AS A WHOLE WITHOUT THE  
WRITTEN PERMISSION OF CUSTOM FIREPLACE DESIGN IS PROHIBITED.

UNLESS OTHERWISE SPECIFIED

DIMENSIONS ARE IN INCHES  
TOLERANCES:  
FRACTIONAL  $\pm 1/16$   
ANGULAR: MACH  $\pm 1^\circ$  BEND  $\pm 0.5^\circ$   
TWO PLACE DECIMAL  $\pm 0.01$   
THREE PLACE DECIMAL  $\pm 0.005$



PROJECT

CALLISTA Single-Sided | Suspended Gas Fireplace

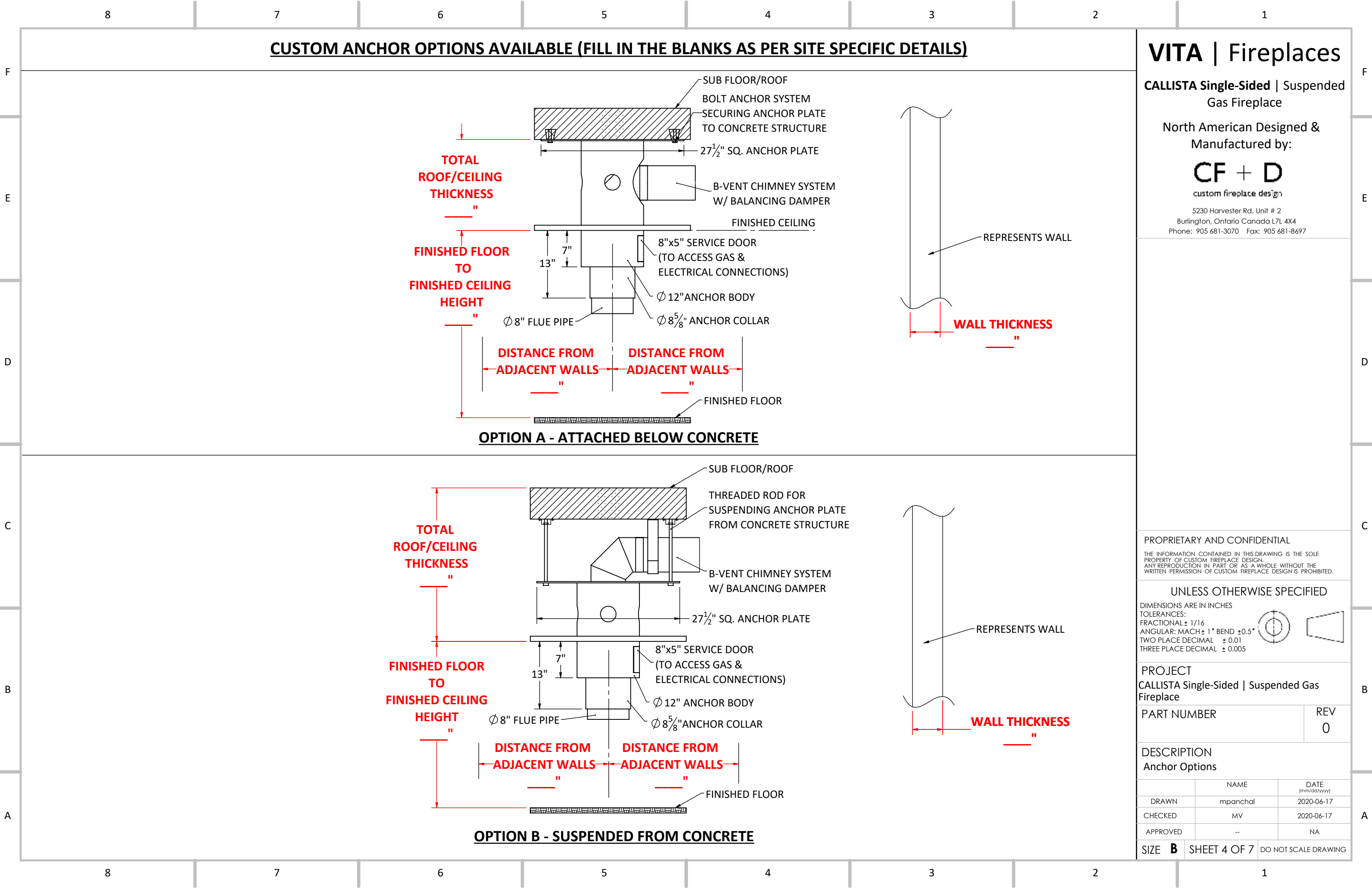
PART NUMBER

REV  
0

DESCRIPTION	Specifications
1. <b>General Information</b>	<ul style="list-style-type: none"> <li>Project Name: [Project Name]</li> <li>Client: [Client Name]</li> <li>Location: [Location]</li> <li>Start Date: [Start Date]</li> <li>End Date: [End Date]</li> </ul>
2. <b>Objectives</b>	<ul style="list-style-type: none"> <li>Objective 1: [Objective 1]</li> <li>Objective 2: [Objective 2]</li> <li>Objective 3: [Objective 3]</li> </ul>
3. <b>Scope</b>	<ul style="list-style-type: none"> <li>Scope 1: [Scope 1]</li> <li>Scope 2: [Scope 2]</li> <li>Scope 3: [Scope 3]</li> </ul>
4. <b>Resources</b>	<ul style="list-style-type: none"> <li>Resource 1: [Resource 1]</li> <li>Resource 2: [Resource 2]</li> <li>Resource 3: [Resource 3]</li> </ul>
5. <b>Risks</b>	<ul style="list-style-type: none"> <li>Risk 1: [Risk 1]</li> <li>Risk 2: [Risk 2]</li> <li>Risk 3: [Risk 3]</li> </ul>
6. <b>Conclusion</b>	<ul style="list-style-type: none"> <li>Conclusion 1: [Conclusion 1]</li> <li>Conclusion 2: [Conclusion 2]</li> <li>Conclusion 3: [Conclusion 3]</li> </ul>

	NAME	DATE (mm/dd/yyyy)
DRAWN	mpanchal	2020-06-17
CHECKED	MV	2020-06-17
APPROVED	--	NA

SIZE <b>B</b>	SHEET 3 OF 7	DO NOT SCALE DRAWING
---------------	--------------	----------------------



VITA | Fireplaces

CALLISTA Single-Sided | Suspended Gas Fireplace

North American Designed & Manufactured by:

CF + D

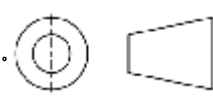
custom fireplace design

5230 Harvester Rd. Unit # 2  
Burlington, Ontario Canada L7L 4X4  
Phone: 905 681-3070 Fax: 905 681-8697

PROPRIETARY AND CONFIDENTIAL  
THE INFORMATION CONTAINED IN THIS DRAWING IS THE SOLE PROPERTY OF CUSTOM FIREPLACE DESIGN. ANY REPRODUCTION IN PART OR AS A WHOLE WITHOUT THE WRITTEN PERMISSION OF CUSTOM FIREPLACE DESIGN IS PROHIBITED.

UNLESS OTHERWISE SPECIFIED

DIMENSIONS ARE IN INCHES  
TOLERANCES:  
FRACTIONAL ± 1/16  
ANGULAR: MACH ± 1° BEND ± 0.5°  
TWO PLACE DECIMAL ± 0.01  
THREE PLACE DECIMAL ± 0.005



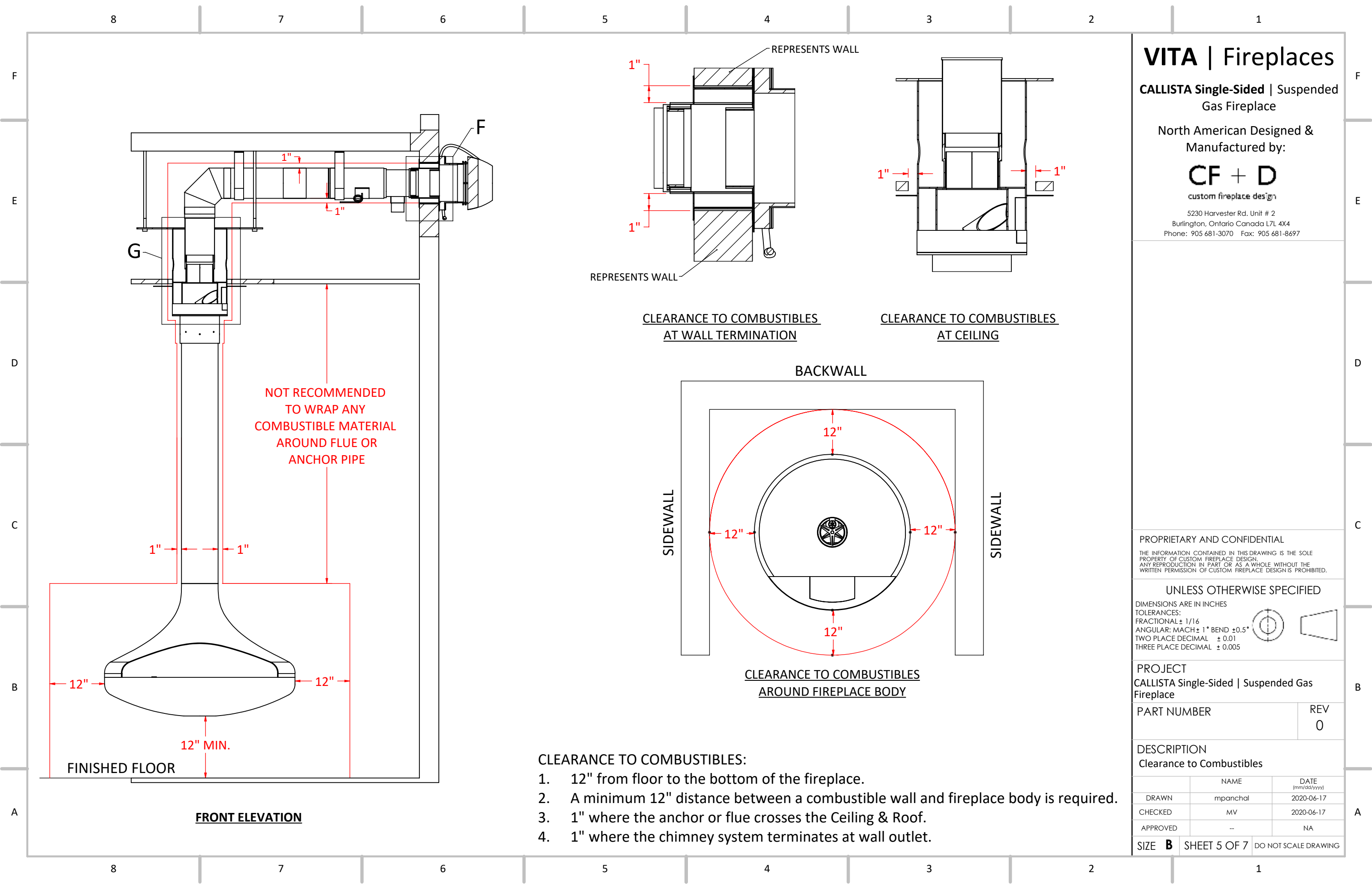
PROJECT  
CALLISTA Single-Sided | Suspended Gas Fireplace

PART NUMBER REV  
0

DESCRIPTION  
Anchor Options

	NAME	DATE (mm/dd/yyyy)
DRAWN	mpanchal	2020-06-17
CHECKED	MV	2020-06-17
APPROVED	--	NA

SIZE **B** SHEET 4 OF 7 DO NOT SCALE DRAWING



# VITA | Fireplaces

CALLISTA Single-Sided | Suspended Gas Fireplace

North American Designed & Manufactured by:

CF + D

custom fireplace design

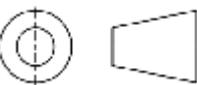
5230 Harvester Rd. Unit # 2  
Burlington, Ontario Canada L7L 4X4  
Phone: 905 681-3070 Fax: 905 681-8697

## PROPRIETARY AND CONFIDENTIAL

THE INFORMATION CONTAINED IN THIS DRAWING IS THE SOLE PROPERTY OF CUSTOM FIREPLACE DESIGN. ANY REPRODUCTION IN PART OR AS A WHOLE WITHOUT THE WRITTEN PERMISSION OF CUSTOM FIREPLACE DESIGN IS PROHIBITED.

## UNLESS OTHERWISE SPECIFIED

DIMENSIONS ARE IN INCHES  
TOLERANCES:  
FRACTIONAL  $\pm 1/16$   
ANGULAR: MACH  $\pm 1^\circ$  BEND  $\pm 0.5^\circ$   
TWO PLACE DECIMAL  $\pm 0.01$   
THREE PLACE DECIMAL  $\pm 0.005$



PROJECT  
CALLISTA Single-Sided | Suspended Gas Fireplace

PART NUMBER	REV 0
-------------	----------

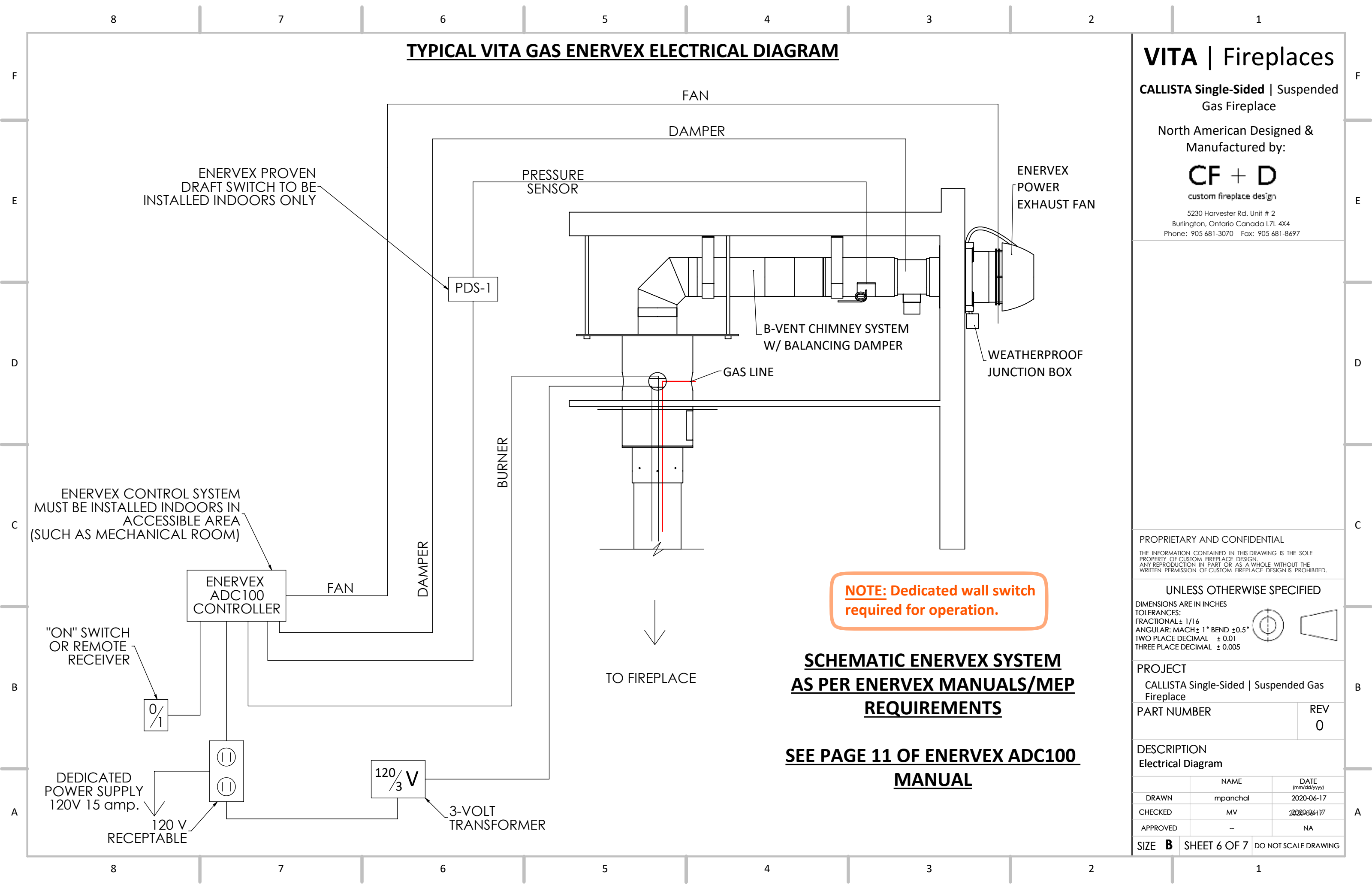
DESCRIPTION  
Clearance to Combustibles

	NAME	DATE (mm/dd/yyyy)
DRAWN	mpanchal	2020-06-17
CHECKED	MV	2020-06-17
APPROVED	--	NA

SIZE **B** SHEET 5 OF 7 DO NOT SCALE DRAWING

## CLEARANCE TO COMBUSTIBLES:

- 12" from floor to the bottom of the fireplace.
- A minimum 12" distance between a combustible wall and fireplace body is required.
- 1" where the anchor or flue crosses the Ceiling & Roof.
- 1" where the chimney system terminates at wall outlet.



**TYPICAL VITA GAS ENERVEX ELECTRICAL DIAGRAM**

**VITA | Fireplaces**

**CALLISTA Single-Sided | Suspended Gas Fireplace**

North American Designed & Manufactured by:

**CF + D**  
custom fireplace design

5230 Harvester Rd. Unit # 2  
Burlington, Ontario Canada L7L 4X4  
Phone: 905 681-3070 Fax: 905 681-8697

ENERVEX PROVEN  
DRAFT SWITCH TO BE  
INSTALLED INDOORS ONLY

PDS-1

PRESSURE  
SENSOR

FAN

DAMPER

ENERVEX  
POWER  
EXHAUST FAN

B-VENT CHIMNEY SYSTEM  
W/ BALANCING DAMPER

GAS LINE

WEATHERPROOF  
JUNCTION BOX

BURNER

DAMPER

FAN

ENERVEX  
ADC100  
CONTROLLER

TO FIREPLACE

**NOTE: Dedicated wall switch  
required for operation.**

**SCHEMATIC ENERVEX SYSTEM  
AS PER ENERVEX MANUALS/MEP  
REQUIREMENTS**

**SEE PAGE 11 OF ENERVEX ADC100  
MANUAL**

ENERVEX CONTROL SYSTEM  
MUST BE INSTALLED INDOORS IN  
ACCESSIBLE AREA  
(SUCH AS MECHANICAL ROOM)

"ON" SWITCH  
OR REMOTE  
RECEIVER

0/1

DEDICATED  
POWER SUPPLY  
120V 15 amp.

120 V  
RECEPTACLE

120/  
3 V

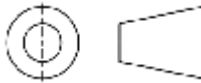
3-VOLT  
TRANSFORMER

PROPRIETARY AND CONFIDENTIAL

THE INFORMATION CONTAINED IN THIS DRAWING IS THE SOLE  
PROPERTY OF CUSTOM FIREPLACE DESIGN.  
ANY REPRODUCTION IN PART OR AS A WHOLE WITHOUT THE  
WRITTEN PERMISSION OF CUSTOM FIREPLACE DESIGN IS PROHIBITED.

UNLESS OTHERWISE SPECIFIED

DIMENSIONS ARE IN INCHES  
TOLERANCES:  
FRACTIONAL:  $\pm 1/16$   
ANGULAR: MACH  $\pm 1^\circ$  BEND  $\pm 0.5^\circ$   
TWO PLACE DECIMAL  $\pm 0.01$   
THREE PLACE DECIMAL  $\pm 0.005$



PROJECT

CALLISTA Single-Sided | Suspended Gas  
Fireplace

PART NUMBER

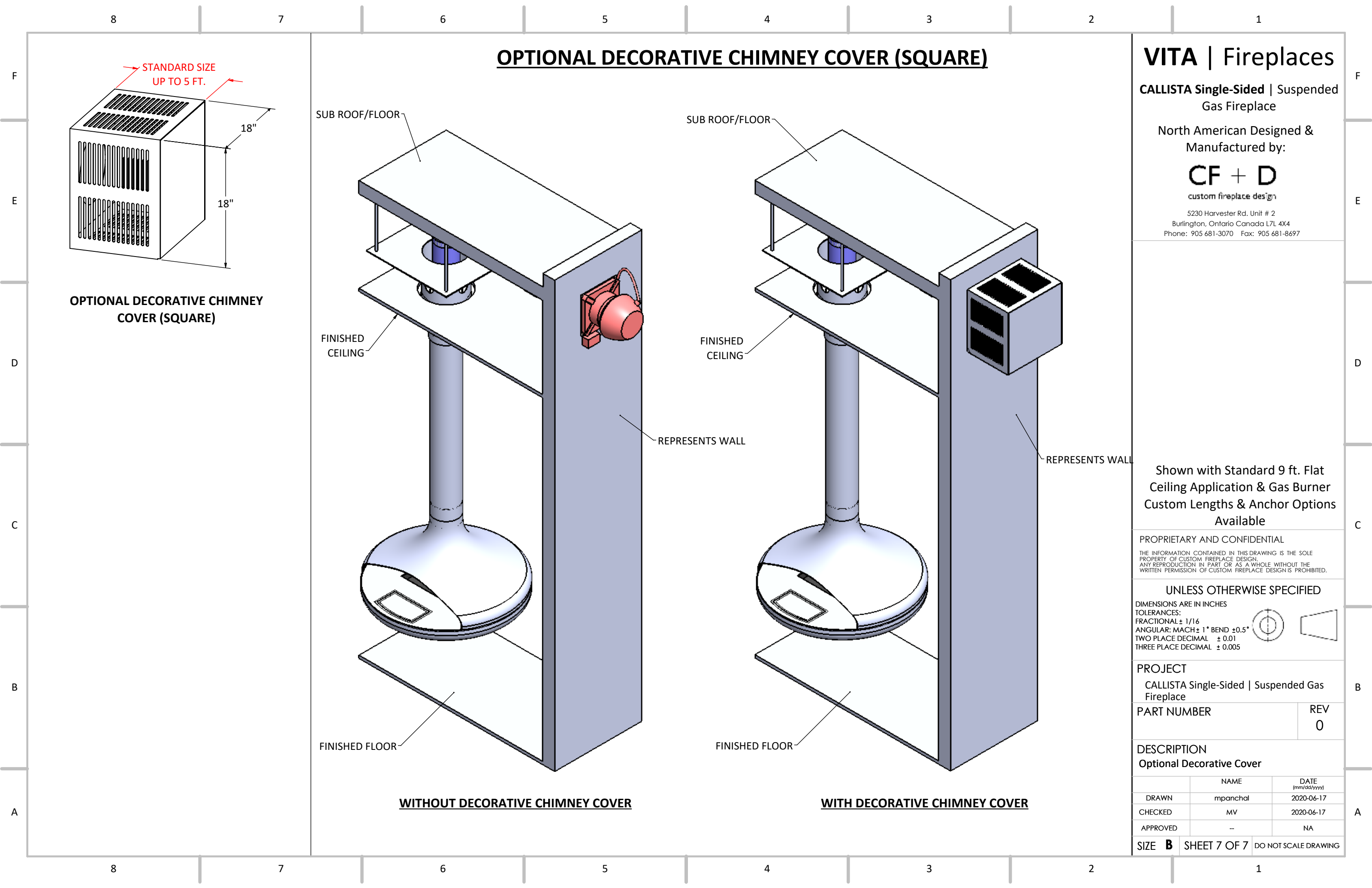
REV  
0

DESCRIPTION

Electrical Diagram

	NAME	DATE (mm/dd/yyyy)
DRAWN	mpanchal	2020-06-17
CHECKED	MV	2020-06-17
APPROVED	--	NA

SIZE **B** SHEET 6 OF 7 DO NOT SCALE DRAWING



**OPTIONAL DECORATIVE CHIMNEY COVER (SQUARE)**

**VITA | Fireplaces**

**CALLISTA Single-Sided | Suspended Gas Fireplace**

North American Designed & Manufactured by:

**CF + D**  
custom fireplace design

5230 Harvester Rd. Unit # 2  
Burlington, Ontario Canada L7L 4X4  
Phone: 905 681-3070 Fax: 905 681-8697

Shown with Standard 9 ft. Flat Ceiling Application & Gas Burner Custom Lengths & Anchor Options Available

PROPRIETARY AND CONFIDENTIAL  
THE INFORMATION CONTAINED IN THIS DRAWING IS THE SOLE PROPERTY OF CUSTOM FIREPLACE DESIGN. ANY REPRODUCTION IN PART OR AS A WHOLE WITHOUT THE WRITTEN PERMISSION OF CUSTOM FIREPLACE DESIGN IS PROHIBITED.

UNLESS OTHERWISE SPECIFIED  
DIMENSIONS ARE IN INCHES  
TOLERANCES:  
FRACTIONAL  $\pm 1/16$   
ANGULAR: MACH  $\pm 1^\circ$  BEND  $\pm 0.5^\circ$   
TWO PLACE DECIMAL  $\pm 0.01$   
THREE PLACE DECIMAL  $\pm 0.005$

PROJECT  
CALLISTA Single-Sided | Suspended Gas Fireplace

PART NUMBER	REV 0
-------------	----------

DESCRIPTION  
Optional Decorative Cover

	NAME	DATE (mm/dd/yyyy)
DRAWN	mpanchal	2020-06-17
CHECKED	MV	2020-06-17
APPROVED	--	NA

SIZE **B** SHEET 7 OF 7 DO NOT SCALE DRAWING