

VITA | Fireplaces

North American Designed & Manufactured by **CF + D** | custom fireplace design



TEIA | Suspended Gas Fireplace



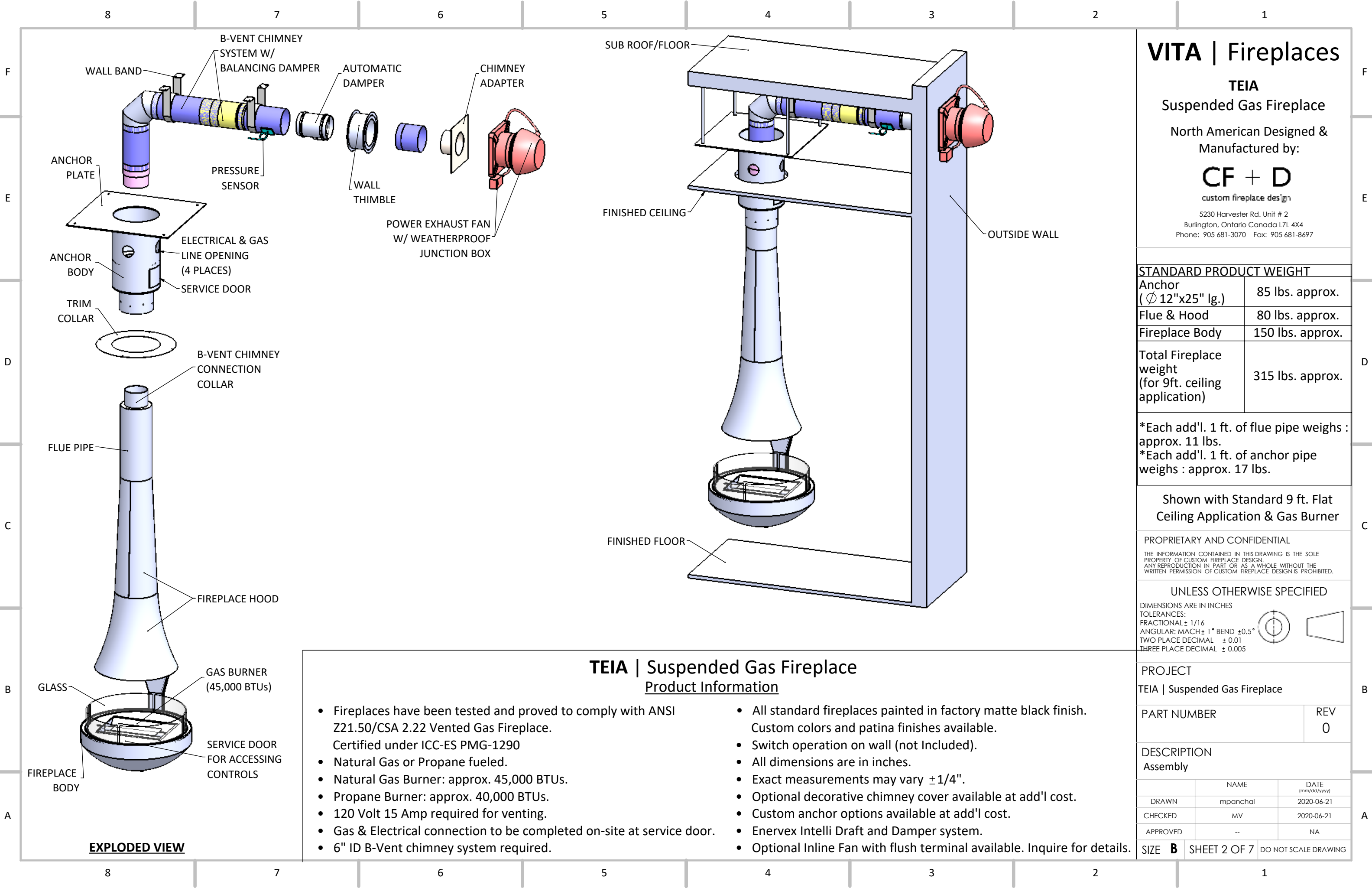
Fireplaces have been tested and proved to comply with ANSI Z21.50/CSA 2.22 Vented Gas Fireplace. Certified under: ICC-ES PMG-1290

PRODUCT LAYOUT PACKAGE (HORIZONTAL TERMINATION)

2020-06-21

CF + D | custom fireplace design

www.customfireplacedesign.com



VITA | Fireplaces

TEIA
Suspended Gas Fireplace
North American Designed & Manufactured by:

CF + D
custom fireplace design

5230 Harvester Rd. Unit # 2
Burlington, Ontario Canada L7L 4X4
Phone: 905 681-3070 Fax: 905 681-8697

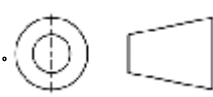
STANDARD PRODUCT WEIGHT	
Anchor (Ø 12"x25" lg.)	85 lbs. approx.
Flue & Hood	80 lbs. approx.
Fireplace Body	150 lbs. approx.
Total Fireplace weight (for 9ft. ceiling application)	315 lbs. approx.

*Each add'l. 1 ft. of flue pipe weighs : approx. 11 lbs.
*Each add'l. 1 ft. of anchor pipe weighs : approx. 17 lbs.

Shown with Standard 9 ft. Flat Ceiling Application & Gas Burner

PROPRIETARY AND CONFIDENTIAL
THE INFORMATION CONTAINED IN THIS DRAWING IS THE SOLE PROPERTY OF CUSTOM FIREPLACE DESIGN. ANY REPRODUCTION IN PART OR AS A WHOLE WITHOUT THE WRITTEN PERMISSION OF CUSTOM FIREPLACE DESIGN IS PROHIBITED.

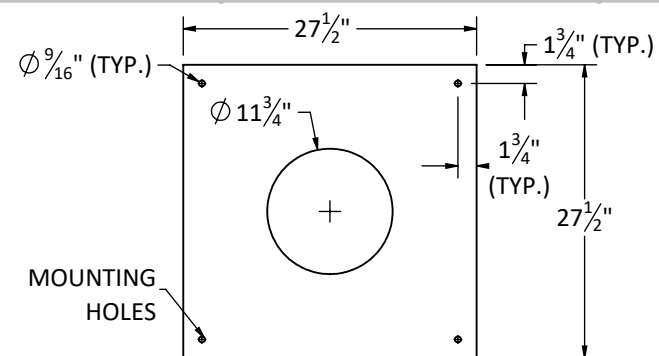
UNLESS OTHERWISE SPECIFIED
DIMENSIONS ARE IN INCHES
TOLERANCES:
FRACTIONAL ± 1/16
ANGULAR: MACH ± 1° BEND ± 0.5°
TWO PLACE DECIMAL ± 0.01
THREE PLACE DECIMAL ± 0.005



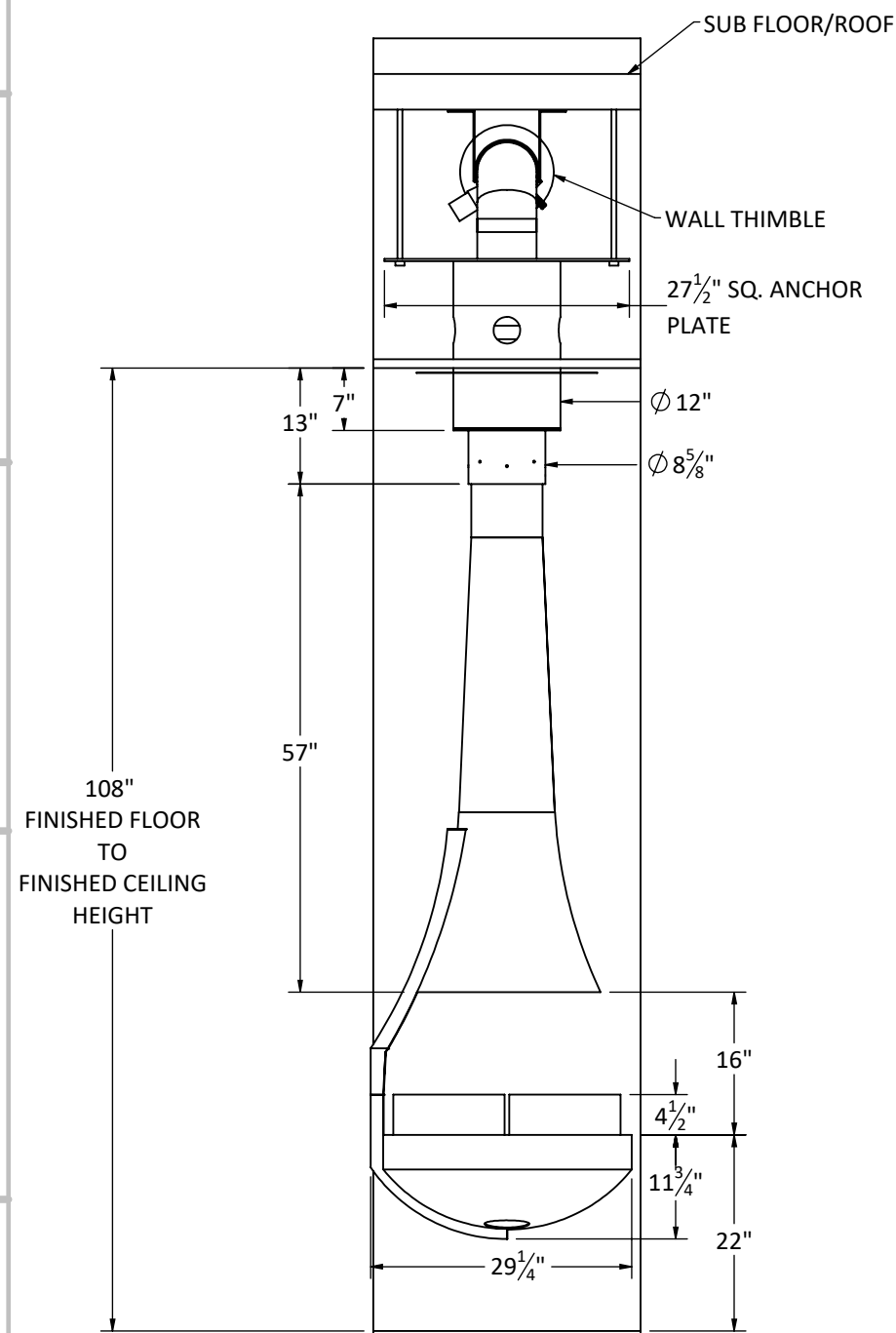
TEIA | Suspended Gas Fireplace
Product Information

- Fireplaces have been tested and proved to comply with ANSI Z21.50/CSA 2.22 Vented Gas Fireplace. Certified under ICC-ES PMG-1290
 - Natural Gas or Propane fueled.
 - Natural Gas Burner: approx. 45,000 BTUs.
 - Propane Burner: approx. 40,000 BTUs.
 - 120 Volt 15 Amp required for venting.
 - Gas & Electrical connection to be completed on-site at service door.
 - 6" ID B-Vent chimney system required.
- All standard fireplaces painted in factory matte black finish. Custom colors and patina finishes available.
 - Switch operation on wall (not Included).
 - All dimensions are in inches.
 - Exact measurements may vary ± 1/4".
 - Optional decorative chimney cover available at add'l cost.
 - Custom anchor options available at add'l cost.
 - Enervex Intelli Draft and Damper system.
 - Optional Inline Fan with flush terminal available. Inquire for details.

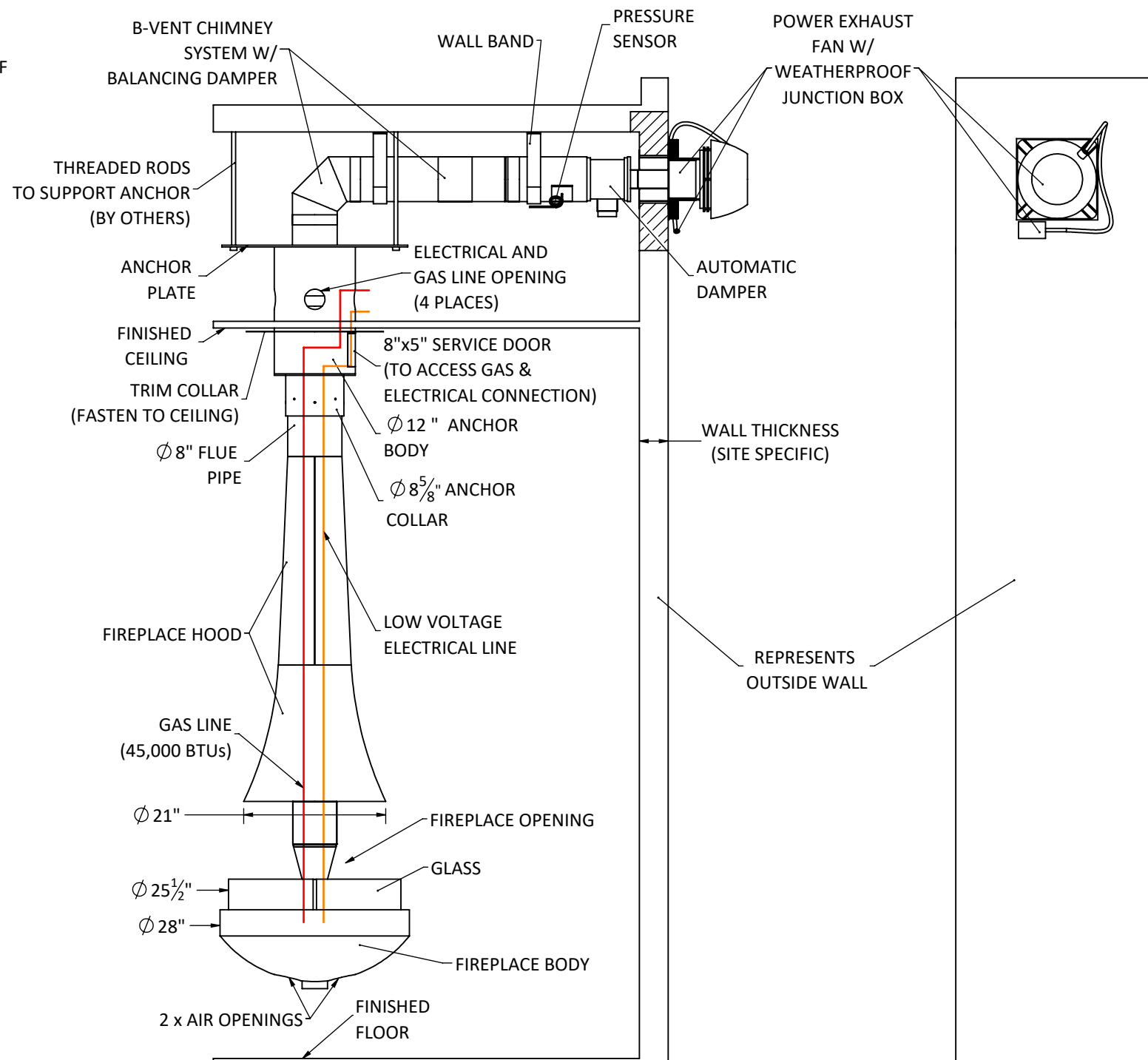
PROJECT TEIA Suspended Gas Fireplace		
PART NUMBER		REV 0
DESCRIPTION Assembly		
	NAME	DATE (mm/dd/yyyy)
DRAWN	mpanchal	2020-06-21
CHECKED	MV	2020-06-21
APPROVED	--	NA
SIZE	B	SHEET 2 OF 7
DO NOT SCALE DRAWING		



STANDARD ANCHOR PLATE- 1/4" THICK.



LEFT SIDE ELEVATION



FRONT ELEVATION

RIGHT SIDE ELEVATION

VITA | Fireplaces

TEIA

Suspended Gas Fireplace

North American Designed &
Manufactured by:

CF + D

custom fireplace design

5230 Harvester Rd. Unit # 2

5230 Harvester Rd. Unit # 2
Burlington, Ontario Canada L7L 4X4
Phone: 905 681-3070 Fax: 905 681-8697

Shown with Standard 9 ft. Flat
Ceiling Application & Gas Burner

PROPRIETARY AND CONFIDENTIAL

THE INFORMATION CONTAINED IN THIS DRAWING IS THE SOLE
PROPERTY OF CUSTOM FIREPLACE DESIGN.
ANY REPRODUCTION IN PART OR AS A WHOLE WITHOUT THE
WRITTEN PERMISSION OF CUSTOM FIREPLACE DESIGN IS PROHIBITED.

UNLESS OTHERWISE SPECIFIED

DIMENSIONS ARE IN INCHES

TOLERANCES:

FRACTIONAL $\pm 1/16$

ANGULAR: MACH $\pm 1^\circ$ BEND $\pm 0.5^\circ$

TWO PLACE DECIMAL ± 0.01 THREE PLACE DECIMAL ± 0.005

PROJECT

TEIA | Suspended Gas Fireplace

PART NUMBER

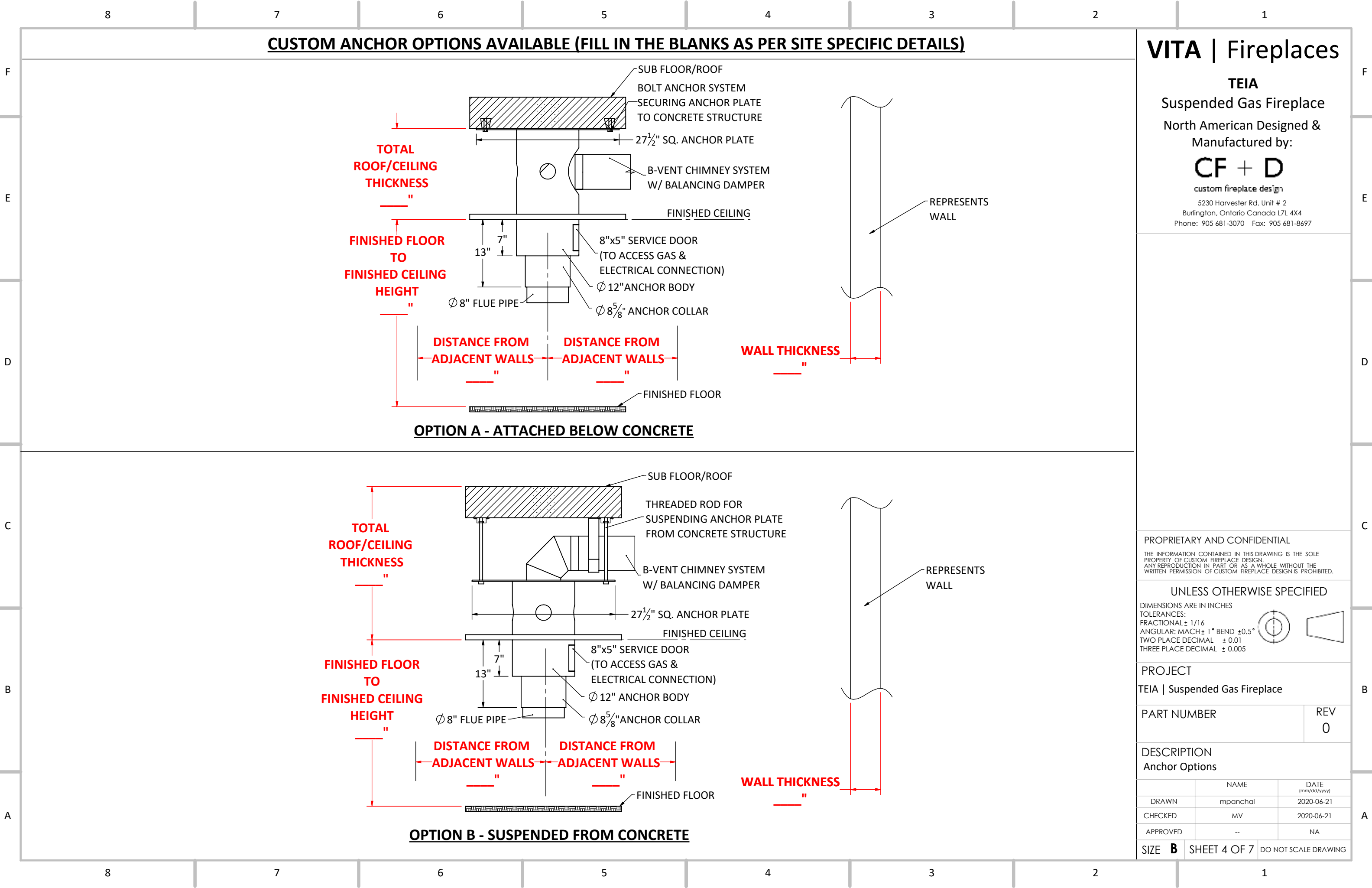
REV
0

DESCRIPTION

Specifications

	NAME	DATE (mm/dd/yyyy)
DRAWN	mpanchal	2020-06-21
CHECKED	MV	2020-06-21
APPROVED	--	NA

SIZE B	SHEET 3 OF 7	DO NOT SCALE DRAWING
---------------	--------------	----------------------



VITA | Fireplaces

TEIA
Suspended Gas Fireplace
North American Designed &
Manufactured by:

CF + D

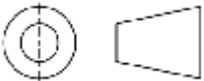
custom fireplace design
5230 Harvester Rd. Unit # 2
Burlington, Ontario Canada L7L 4X4
Phone: 905 681-3070 Fax: 905 681-8697

PROPRIETARY AND CONFIDENTIAL

THE INFORMATION CONTAINED IN THIS DRAWING IS THE SOLE PROPERTY OF CUSTOM FIREPLACE DESIGN. ANY REPRODUCTION IN PART OR AS A WHOLE WITHOUT THE WRITTEN PERMISSION OF CUSTOM FIREPLACE DESIGN IS PROHIBITED.

UNLESS OTHERWISE SPECIFIED

DIMENSIONS ARE IN INCHES
TOLERANCES:
FRACTIONAL ± 1/16
ANGULAR: MACH ± 1° BEND ± 0.5°
TWO PLACE DECIMAL ± 0.01
THREE PLACE DECIMAL ± 0.005



PROJECT

TEIA | Suspended Gas Fireplace

PART NUMBER

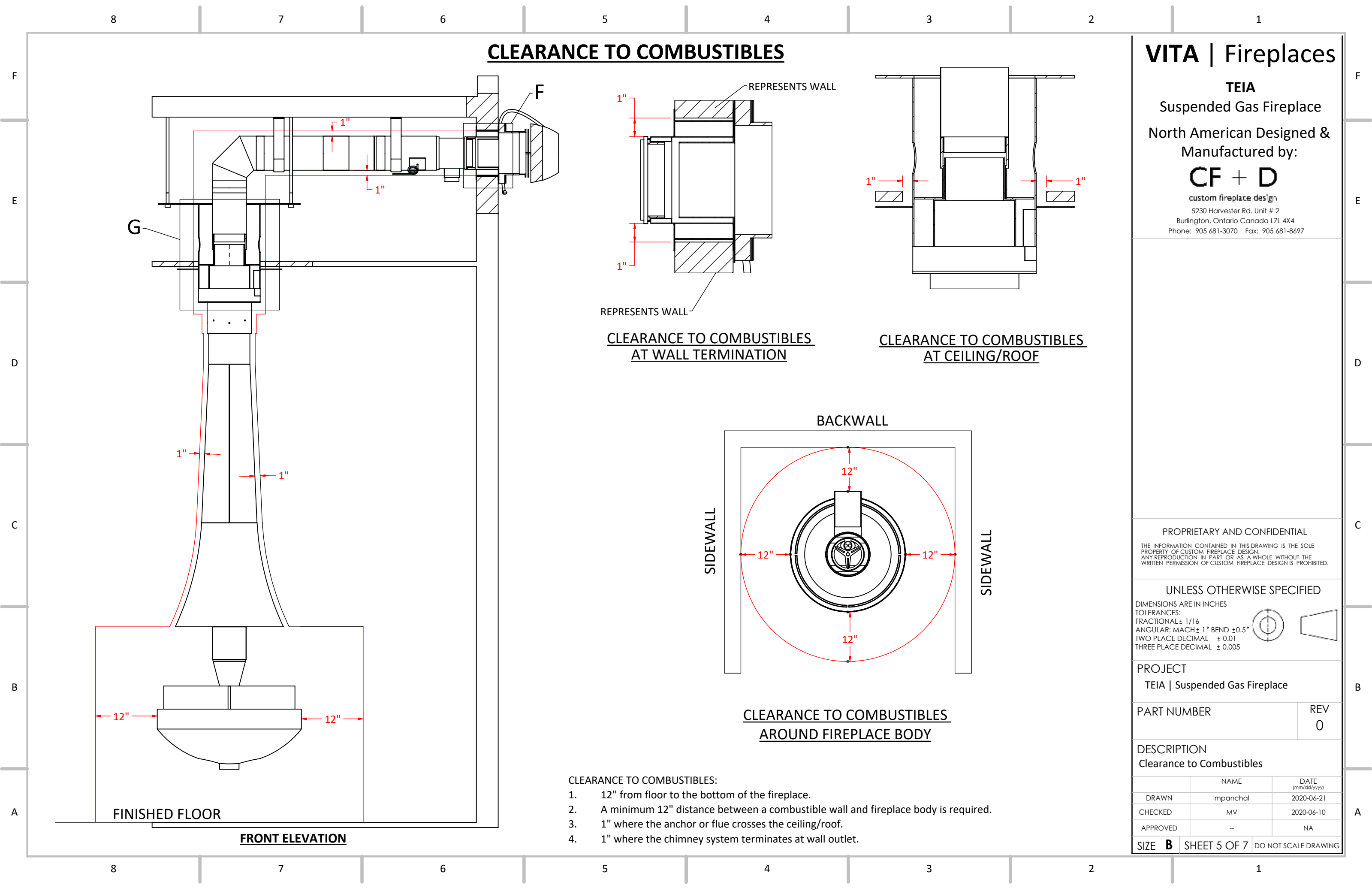
REV
0

DESCRIPTION

Anchor Options

	NAME	DATE (mm/dd/yyyy)
DRAWN	mpanchal	2020-06-21
CHECKED	MV	2020-06-21
APPROVED	--	NA

SIZE **B** SHEET 4 OF 7 DO NOT SCALE DRAWING



CLEARANCE TO COMBUSTIBLES

VITA | Fireplaces

TEIA
Suspended Gas Fireplace
North American Designed & Manufactured by:
CF + D
custom fireplace design
5230 Harvester Rd. Unit # 2
Burlington, Ontario Canada L7L 4X4
Phone: 905 681-3070 Fax: 905 681-8697

**CLEARANCE TO COMBUSTIBLES
AT WALL TERMINATION**

**CLEARANCE TO COMBUSTIBLES
AT CEILING/ROOF**

**CLEARANCE TO COMBUSTIBLES
AROUND FIREPLACE BODY**

- CLEARANCE TO COMBUSTIBLES:
1. 12" from floor to the bottom of the fireplace.
 2. A minimum 12" distance between a combustible wall and fireplace body is required.
 3. 1" where the anchor or flue crosses the ceiling/roof.
 4. 1" where the chimney system terminates at wall outlet.

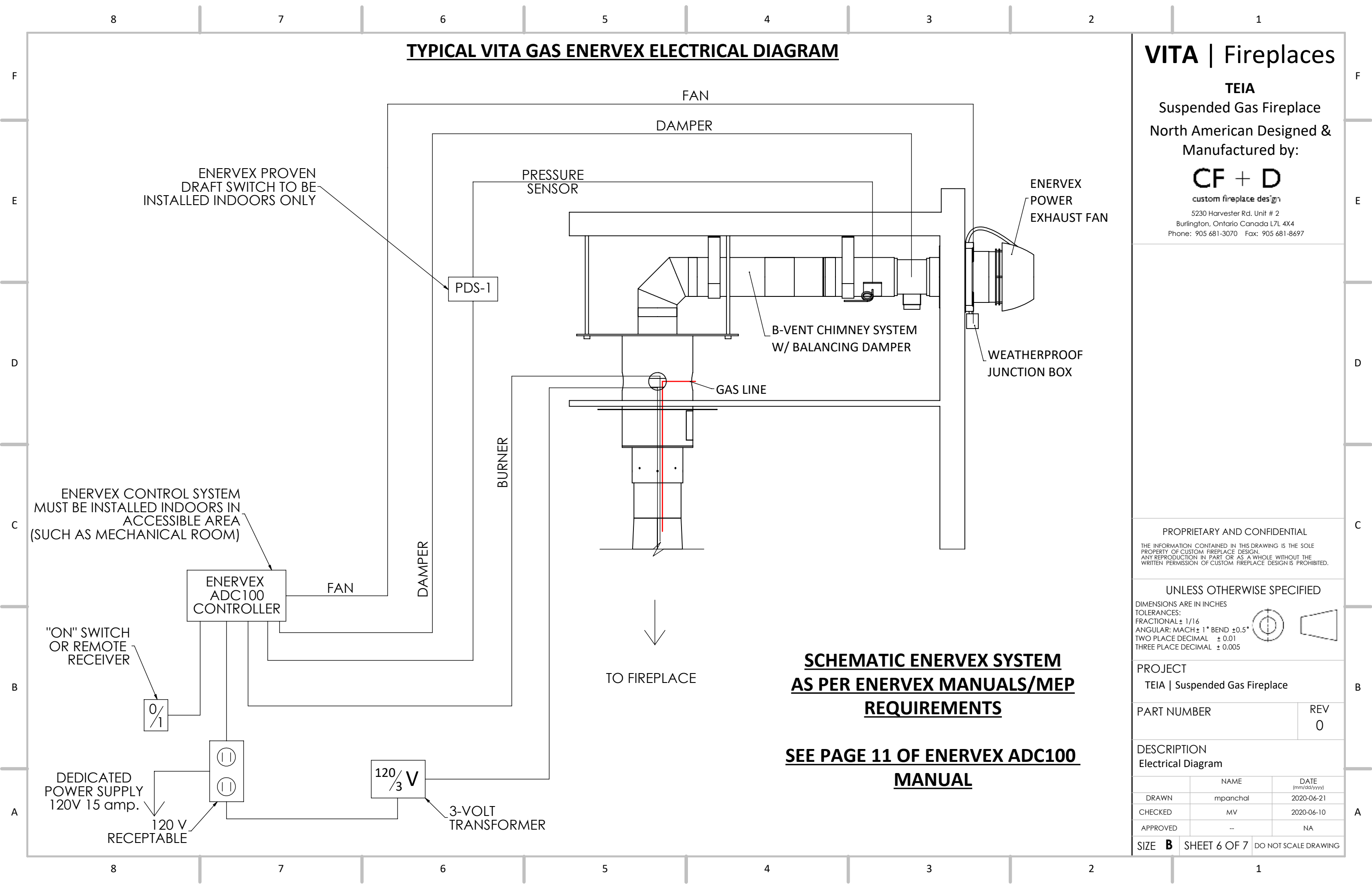
PROPRIETARY AND CONFIDENTIAL

THE INFORMATION CONTAINED IN THIS DRAWING IS THE SOLE PROPERTY OF CUSTOM FIREPLACE DESIGN. ANY REPRODUCTION IN PART OR AS A WHOLE WITHOUT THE WRITTEN PERMISSION OF CUSTOM FIREPLACE DESIGN IS PROHIBITED.

UNLESS OTHERWISE SPECIFIED

DIMENSIONS ARE IN INCHES
TOLERANCES:
FRACTIONAL ± 1/16
ANGULAR: MACH ± 1° BEND ± 0.5°
TWO PLACE DECIMAL ± 0.01
THREE PLACE DECIMAL ± 0.005

PROJECT		
TEIA Suspended Gas Fireplace		
PART NUMBER		REV 0
DESCRIPTION Clearance to Combustibles		
	NAME	DATE (mm/dd/yyyy)
DRAWN	mpanchal	2020-06-21
CHECKED	MV	2020-06-10
APPROVED	--	NA
SIZE B	SHEET 5 OF 7	DO NOT SCALE DRAWING



TYPICAL VITA GAS ENERVEX ELECTRICAL DIAGRAM

VITA | Fireplaces

TEIA
Suspended Gas Fireplace
North American Designed &
Manufactured by:

CF + D

custom fireplace design

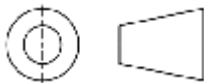
5230 Harvester Rd. Unit # 2
Burlington, Ontario Canada L7L 4X4
Phone: 905 681-3070 Fax: 905 681-8697

PROPRIETARY AND CONFIDENTIAL

THE INFORMATION CONTAINED IN THIS DRAWING IS THE SOLE
PROPERTY OF CUSTOM FIREPLACE DESIGN.
ANY REPRODUCTION IN PART OR AS A WHOLE WITHOUT THE
WRITTEN PERMISSION OF CUSTOM FIREPLACE DESIGN IS PROHIBITED.

UNLESS OTHERWISE SPECIFIED

DIMENSIONS ARE IN INCHES
TOLERANCES:
FRACTIONAL $\pm 1/16$
ANGULAR: MACH $\pm 1^\circ$ BEND $\pm 0.5^\circ$
TWO PLACE DECIMAL ± 0.01
THREE PLACE DECIMAL ± 0.005



PROJECT
TEIA | Suspended Gas Fireplace

PART NUMBER
REV
0

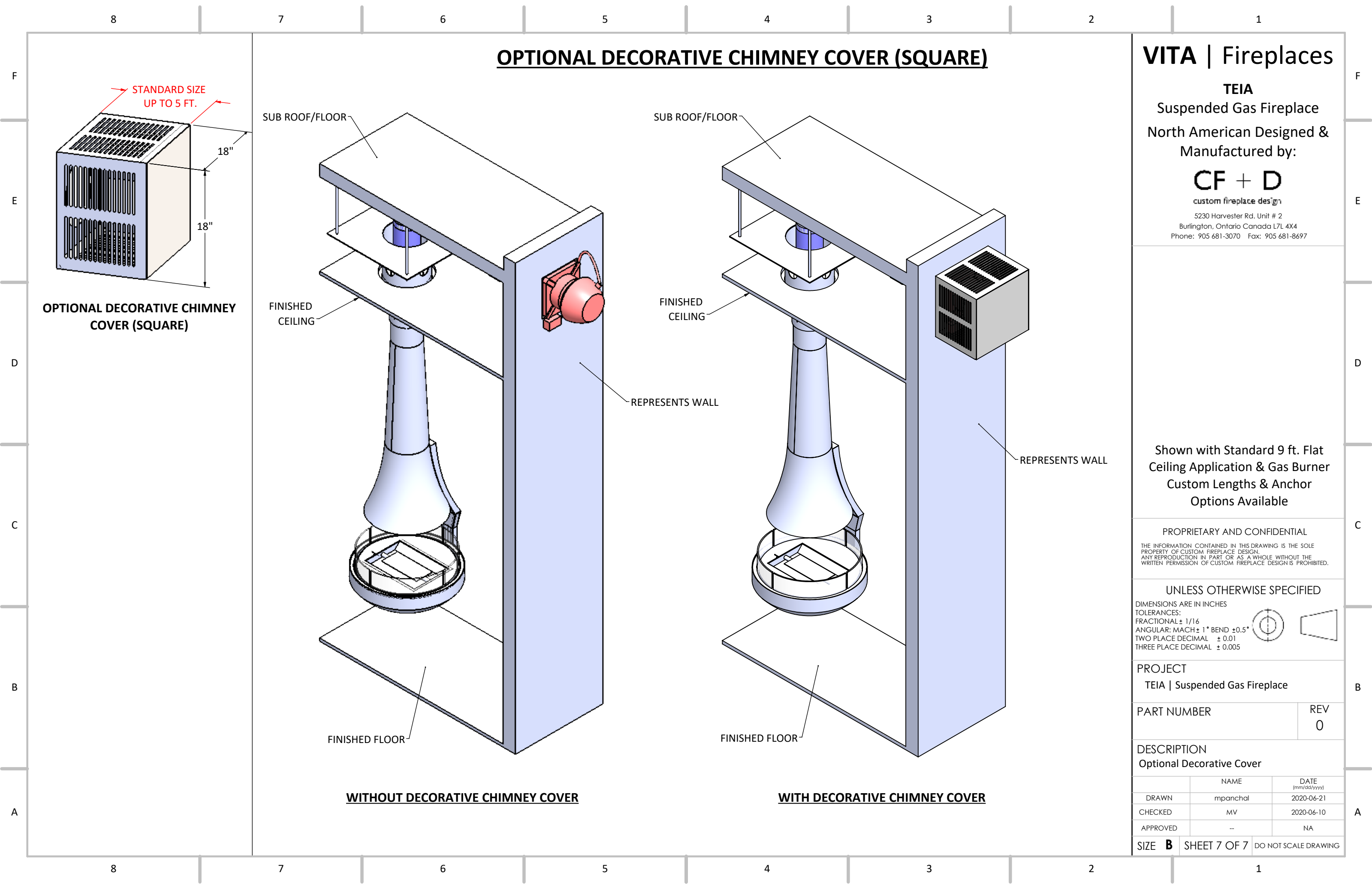
DESCRIPTION
Electrical Diagram

	NAME	DATE (mm/dd/yyyy)
DRAWN	mpanchal	2020-06-21
CHECKED	MV	2020-06-10
APPROVED	--	NA

SIZE **B** SHEET 6 OF 7 DO NOT SCALE DRAWING

SCHEMATIC ENERVEX SYSTEM
AS PER ENERVEX MANUALS/MEP
REQUIREMENTS

SEE PAGE 11 OF ENERVEX ADC100
MANUAL



OPTIONAL DECORATIVE CHIMNEY COVER (SQUARE)

VITA | Fireplaces

TEIA
Suspended Gas Fireplace
North American Designed &
Manufactured by:

CF + D

custom fireplace design

5230 Harvester Rd. Unit # 2
Burlington, Ontario Canada L7L 4X4
Phone: 905 681-3070 Fax: 905 681-8697

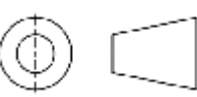
Shown with Standard 9 ft. Flat
Ceiling Application & Gas Burner
Custom Lengths & Anchor
Options Available

PROPRIETARY AND CONFIDENTIAL

THE INFORMATION CONTAINED IN THIS DRAWING IS THE SOLE
PROPERTY OF CUSTOM FIREPLACE DESIGN.
ANY REPRODUCTION IN PART OR AS A WHOLE WITHOUT THE
WRITTEN PERMISSION OF CUSTOM FIREPLACE DESIGN IS PROHIBITED.

UNLESS OTHERWISE SPECIFIED

DIMENSIONS ARE IN INCHES
TOLERANCES:
FRACTIONAL $\pm 1/16$
ANGULAR: MACH $\pm 1^\circ$ BEND $\pm 0.5^\circ$
TWO PLACE DECIMAL ± 0.01
THREE PLACE DECIMAL ± 0.005



PROJECT
TEIA | Suspended Gas Fireplace

PART NUMBER	REV
	0

DESCRIPTION
Optional Decorative Cover

	NAME	DATE (mm/dd/yyyy)
DRAWN	mpanchal	2020-06-21
CHECKED	MV	2020-06-10
APPROVED	--	NA