

VITA | Fireplaces

North American Designed & Manufactured by **CF + D** | custom fireplace design



NICO | Suspended Hood with Base Gas Fireplace



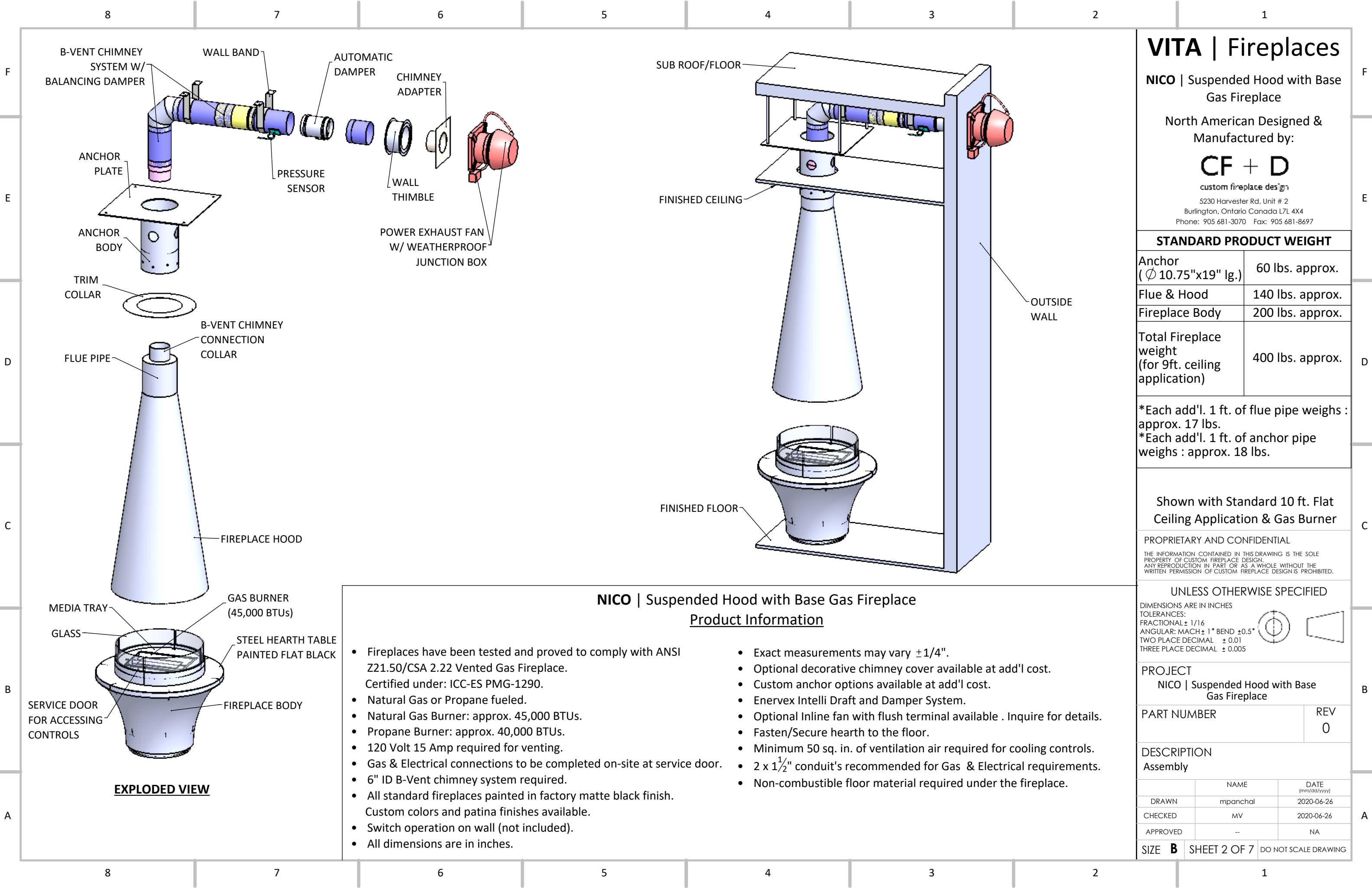
Fireplaces have been tested and proved to comply with ANSI Z21.50/CSA 2.22
Vented Gas Fireplace. Certified under: ICC-ES PMG-1290

PRODUCT LAYOUT PACKAGE (HORIZONTAL TERMINATION)

2020-06-26

CF + D | custom fireplace design

www.customfireplacedesign.com



VITA | Fireplaces

NICO | Suspended Hood with Base Gas Fireplace

North American Designed & Manufactured by:

CF + D

custom fireplace design

5230 Harvester Rd. Unit # 2
Burlington, Ontario Canada L7L 4X4
Phone: 905 681-3070 Fax: 905 681-8697

STANDARD PRODUCT WEIGHT

Anchor (Ø 10.75"x19" lg.)	60 lbs. approx.
Flue & Hood	140 lbs. approx.
Fireplace Body	200 lbs. approx.
Total Fireplace weight (for 9ft. ceiling application)	400 lbs. approx.

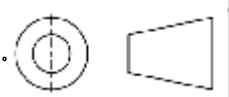
*Each add'l. 1 ft. of flue pipe weighs : approx. 17 lbs.
*Each add'l. 1 ft. of anchor pipe weighs : approx. 18 lbs.

Shown with Standard 10 ft. Flat Ceiling Application & Gas Burner

PROPRIETARY AND CONFIDENTIAL
THE INFORMATION CONTAINED IN THIS DRAWING IS THE SOLE PROPERTY OF CUSTOM FIREPLACE DESIGN. ANY REPRODUCTION IN PART OR AS A WHOLE WITHOUT THE WRITTEN PERMISSION OF CUSTOM FIREPLACE DESIGN IS PROHIBITED.

UNLESS OTHERWISE SPECIFIED

DIMENSIONS ARE IN INCHES
TOLERANCES:
FRACTIONAL ± 1/16
ANGULAR: MACH ± 1° BEND ± 0.5°
TWO PLACE DECIMAL ± 0.01
THREE PLACE DECIMAL ± 0.005



PROJECT
NICO | Suspended Hood with Base Gas Fireplace

PART NUMBER	REV 0
-------------	----------

DESCRIPTION
Assembly

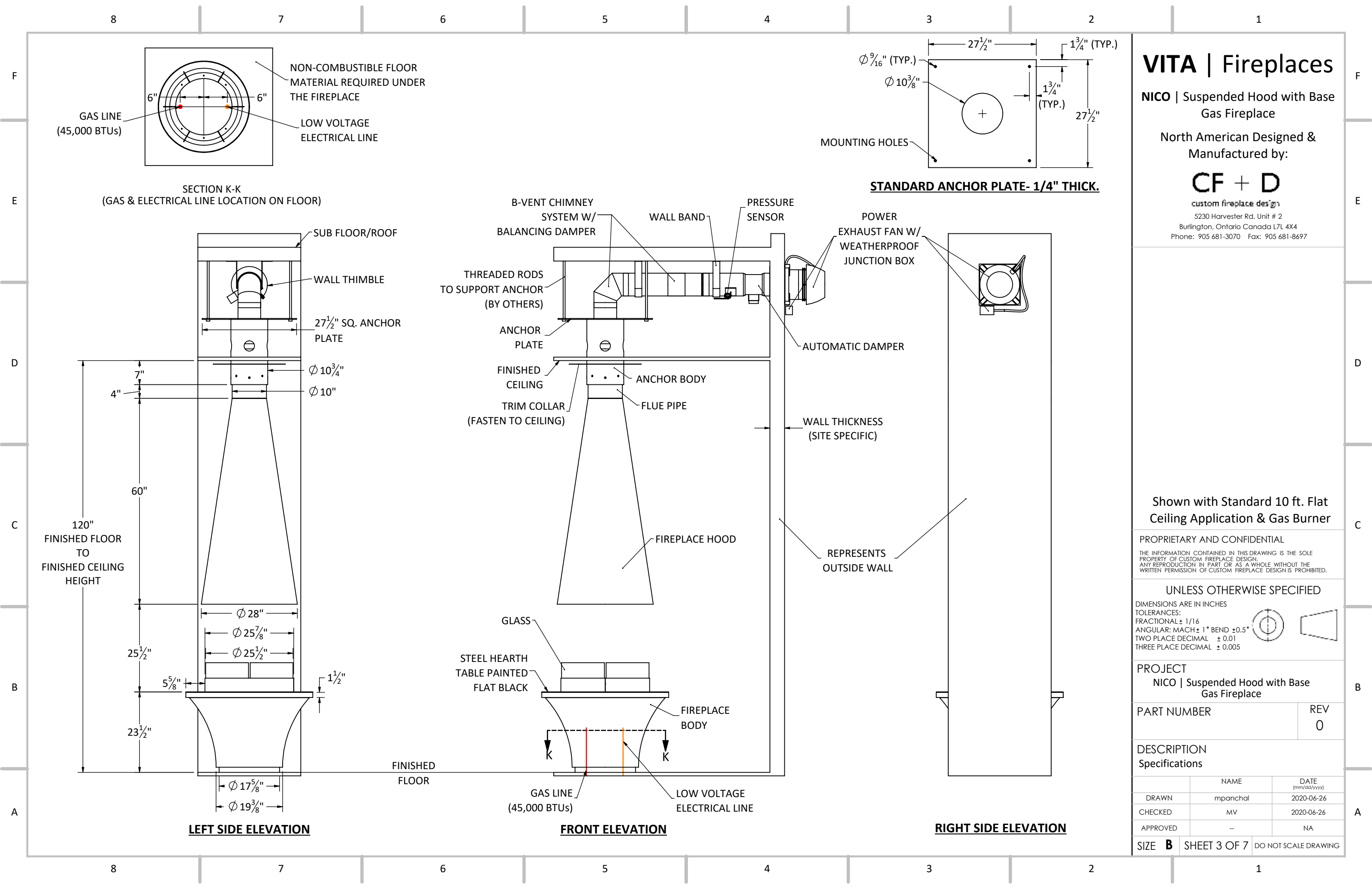
	NAME	DATE (mm/dd/yyyy)
DRAWN	mpanchal	2020-06-26
CHECKED	MV	2020-06-26
APPROVED	--	NA

SIZE **B** SHEET 2 OF 7 DO NOT SCALE DRAWING

NICO | Suspended Hood with Base Gas Fireplace

Product Information

- Fireplaces have been tested and proved to comply with ANSI Z21.50/CSA 2.22 Vented Gas Fireplace. Certified under: ICC-ES PMG-1290.
- Natural Gas or Propane fueled.
- Natural Gas Burner: approx. 45,000 BTUs.
- Propane Burner: approx. 40,000 BTUs.
- 120 Volt 15 Amp required for venting.
- Gas & Electrical connections to be completed on-site at service door.
- 6" ID B-Vent chimney system required.
- All standard fireplaces painted in factory matte black finish. Custom colors and patina finishes available.
- Switch operation on wall (not included).
- All dimensions are in inches.
- Exact measurements may vary ±1/4".
- Optional decorative chimney cover available at add'l cost.
- Custom anchor options available at add'l cost.
- Energex Intelli Draft and Damper System.
- Optional Inline fan with flush terminal available . Inquire for details.
- Fasten/Secure hearth to the floor.
- Minimum 50 sq. in. of ventilation air required for cooling controls.
- 2 x 1½" conduit's recommended for Gas & Electrical requirements.
- Non-combustible floor material required under the fireplace.



VITA | Fireplaces

NICO | Suspended Hood with Base Gas Fireplace

North American Designed & Manufactured by:

CF + D

custom fireplace design

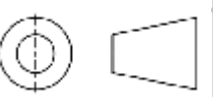
5230 Harvester Rd. Unit # 2
Burlington, Ontario Canada L7L 4X4
Phone: 905 681-3070 Fax: 905 681-8697

Shown with Standard 10 ft. Flat Ceiling Application & Gas Burner

PROPRIETARY AND CONFIDENTIAL
THE INFORMATION CONTAINED IN THIS DRAWING IS THE SOLE PROPERTY OF CUSTOM FIREPLACE DESIGN. ANY REPRODUCTION IN PART OR AS A WHOLE WITHOUT THE WRITTEN PERMISSION OF CUSTOM FIREPLACE DESIGN IS PROHIBITED.

UNLESS OTHERWISE SPECIFIED

DIMENSIONS ARE IN INCHES
TOLERANCES:
FRACTIONAL ± 1/16
ANGULAR: MACH ± 1° BEND ± 0.5°
TWO PLACE DECIMAL ± 0.01
THREE PLACE DECIMAL ± 0.005

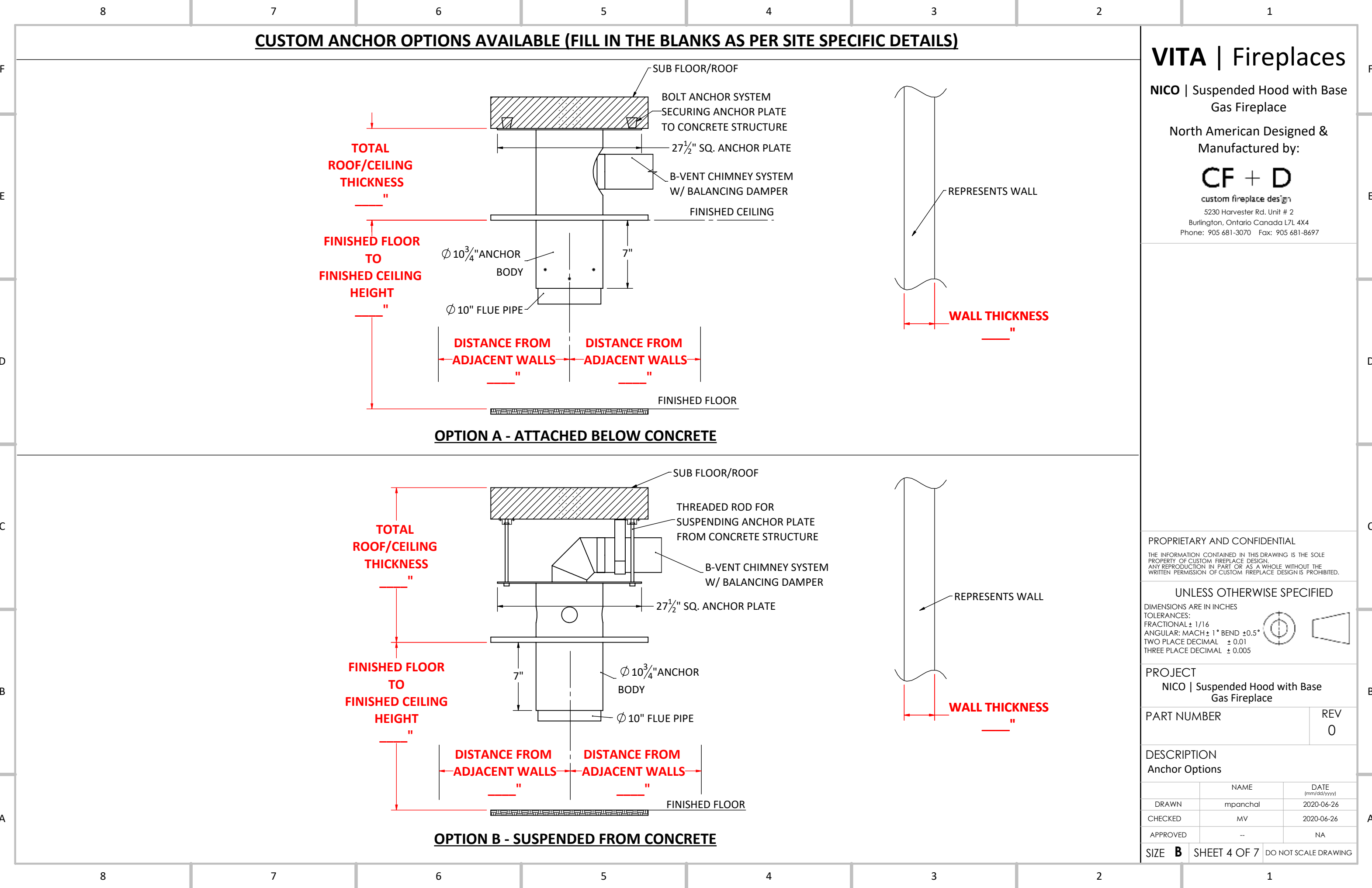


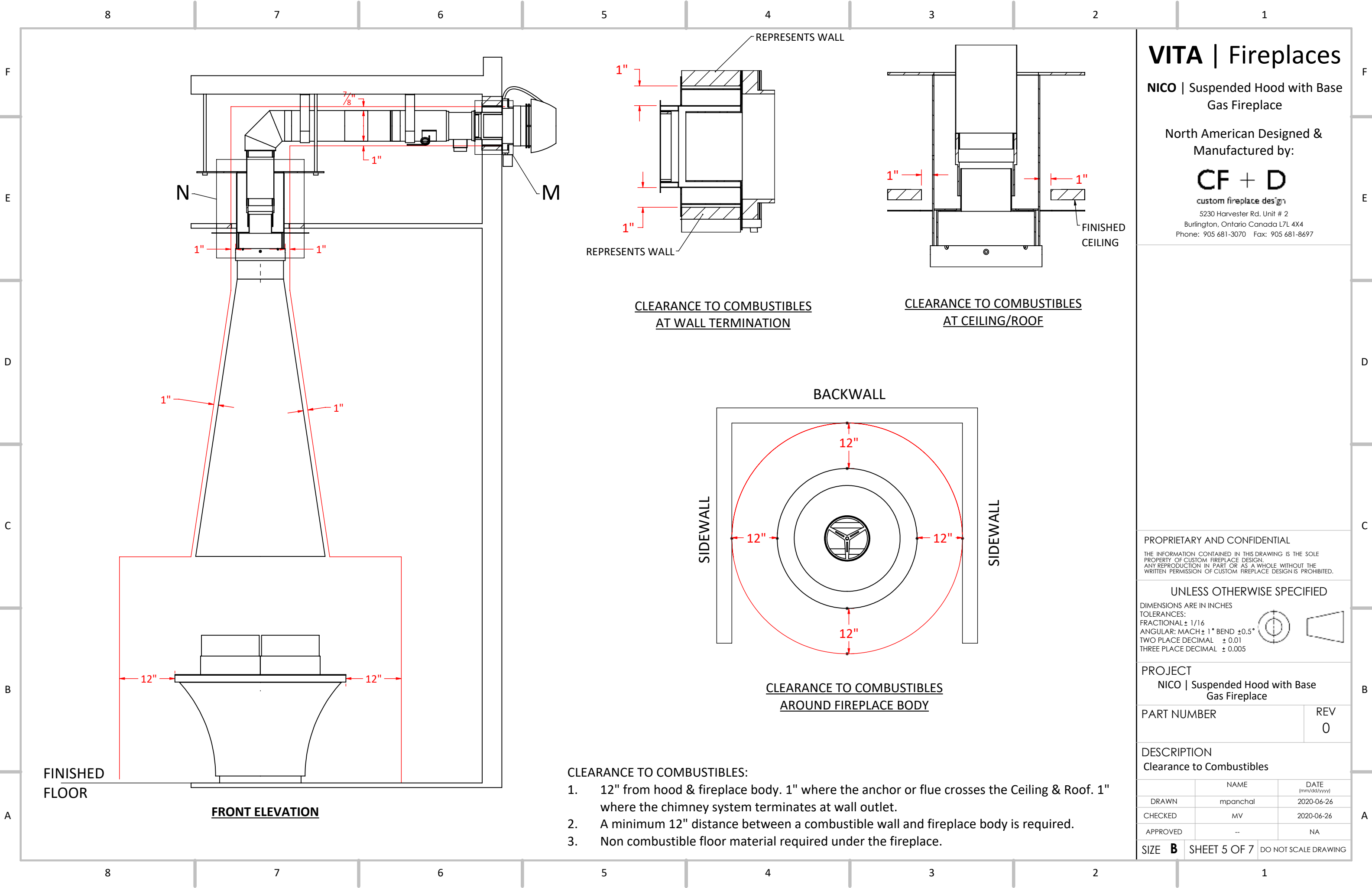
PROJECT
NICO | Suspended Hood with Base Gas Fireplace

PART NUMBER	REV 0
-------------	----------

DESCRIPTION
Specifications

	NAME	DATE (mm/dd/yyyy)
DRAWN	mpanchal	2020-06-26
CHECKED	MV	2020-06-26
APPROVED	--	NA





VITA | Fireplaces

NICO | Suspended Hood with Base Gas Fireplace

North American Designed & Manufactured by:

CF + D

custom fireplace design

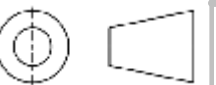
5230 Harvester Rd. Unit # 2
Burlington, Ontario Canada L7L 4X4
Phone: 905 681-3070 Fax: 905 681-8697

PROPRIETARY AND CONFIDENTIAL

THE INFORMATION CONTAINED IN THIS DRAWING IS THE SOLE PROPERTY OF CUSTOM FIREPLACE DESIGN. ANY REPRODUCTION IN PART OR AS A WHOLE WITHOUT THE WRITTEN PERMISSION OF CUSTOM FIREPLACE DESIGN IS PROHIBITED.

UNLESS OTHERWISE SPECIFIED

DIMENSIONS ARE IN INCHES
TOLERANCES:
FRACTIONAL $\pm 1/16$
ANGULAR: MACH $\pm 1^\circ$ BEND $\pm 0.5^\circ$
TWO PLACE DECIMAL ± 0.01
THREE PLACE DECIMAL ± 0.005



PROJECT

NICO | Suspended Hood with Base Gas Fireplace

PART NUMBER

REV
0

DESCRIPTION

Clearance to Combustibles

	NAME	DATE (mm/dd/yyyy)
DRAWN	mpanchal	2020-06-26
CHECKED	MV	2020-06-26
APPROVED	--	NA

SIZE **B** SHEET 5 OF 7 DO NOT SCALE DRAWING

TYPICAL VITA GAS ENERVEX ELECTRICAL DIAGRAM

SCHEMATIC ENERVEX SYSTEM
AS PER ENERVEX MANUALS/MEP
REQUIREMENTS

SEE PAGE 11 OF ENERVEX ADC100
MANUAL

ENERVEX PROVEN
DRAFT SWITCH TO BE
INSTALLED INDOORS ONLY

ENERVEX CONTROL SYSTEM
MUST BE INSTALLED INDOORS IN
ACCESSIBLE AREA
(SUCH AS MECHANICAL ROOM)

"ON" SWITCH
OR REMOTE
RECEIVER

DEDICATED
POWER SUPPLY
120V 15 amp.

120 V
RECEPTABLE

3-VOLT
TRANSFORMER

120/
3 V

BURNER

GAS LINE

FIREPLACE
BODY

FINISHED FLOOR

LOW VOLTAGE
ELECTRICAL LINE

FAN
DAMPER

PRESSURE
SENSOR

B-VENT CHIMNEY
SYSTEM
W/ BALANCING
DAMPER

ENERVEX
POWER
EXHAUST
FAN

WEATHER PROOF
JUNCTION BOX

VITA | Fireplaces

NICO | Suspended Hood with Base
Gas Fireplace

North American Designed &
Manufactured by:

CF + D

custom fireplace design

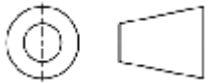
5230 Harvester Rd. Unit # 2
Burlington, Ontario Canada L7L 4X4
Phone: 905 681-3070 Fax: 905 681-8697

PROPRIETARY AND CONFIDENTIAL

THE INFORMATION CONTAINED IN THIS DRAWING IS THE SOLE
PROPERTY OF CUSTOM FIREPLACE DESIGN.
ANY REPRODUCTION IN PART OR AS A WHOLE WITHOUT THE
WRITTEN PERMISSION OF CUSTOM FIREPLACE DESIGN IS PROHIBITED.

UNLESS OTHERWISE SPECIFIED

DIMENSIONS ARE IN INCHES
TOLERANCES:
FRACTIONAL ± 1/16
ANGULAR: MACH ± 1° BEND ± 0.5°
TWO PLACE DECIMAL ± 0.01
THREE PLACE DECIMAL ± 0.005



PROJECT

NICO | Suspended Hood with Base Gas
Fireplace

PART NUMBER

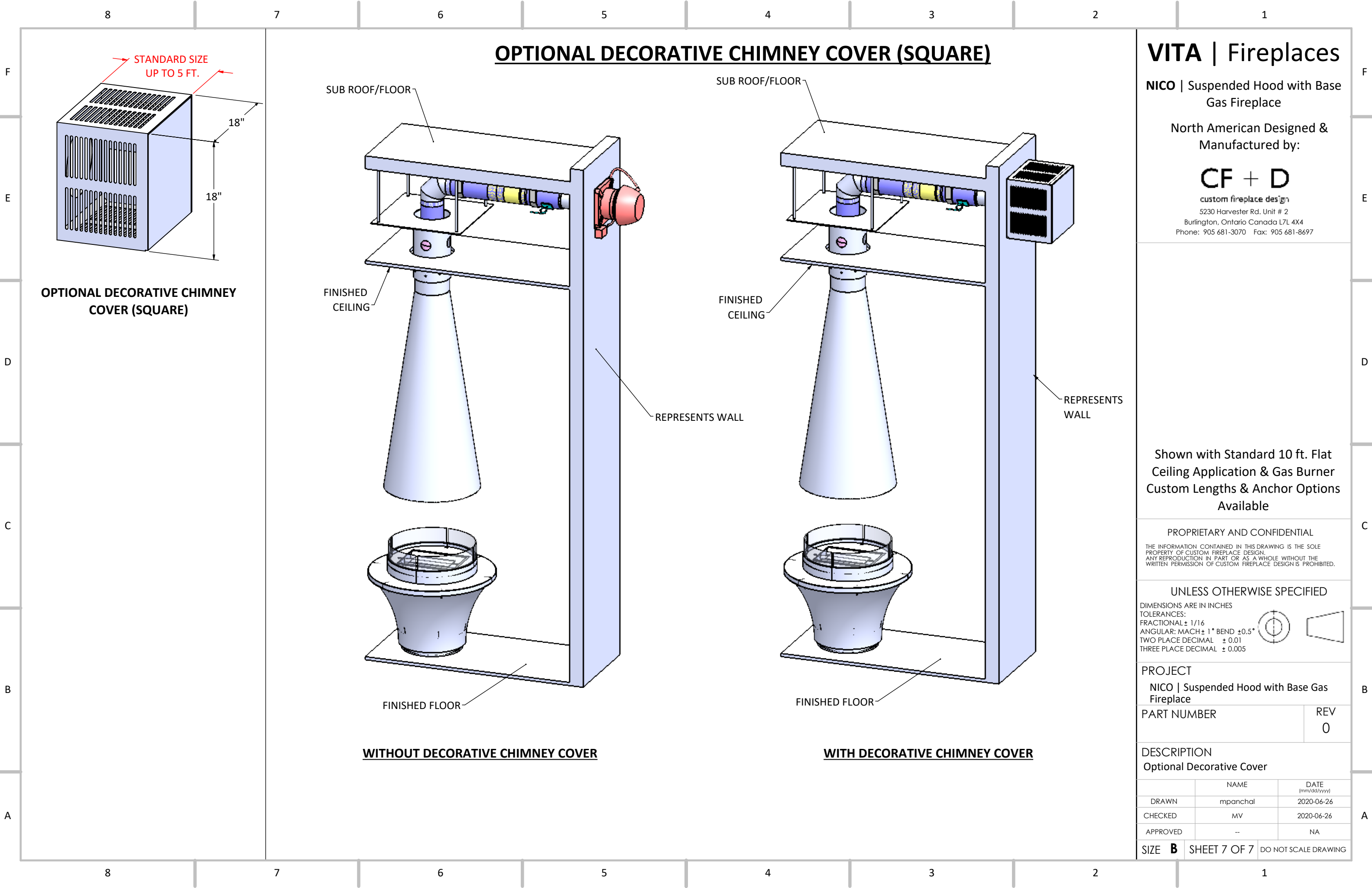
REV
0

DESCRIPTION

Electrical Diagram

	NAME	DATE (mm/dd/yyyy)
DRAWN	mpanchal	2020-06-26
CHECKED	MV	2020-06-26
APPROVED	--	NA

SIZE **B** SHEET 6 OF 7 DO NOT SCALE DRAWING



OPTIONAL DECORATIVE CHIMNEY COVER (SQUARE)

VITA | Fireplaces

NICO | Suspended Hood with Base Gas Fireplace

North American Designed & Manufactured by:

CF + D

custom fireplace design

5230 Harvester Rd. Unit # 2
Burlington, Ontario Canada L7L 4X4
Phone: 905 681-3070 Fax: 905 681-8697

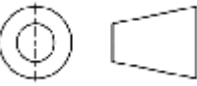
Shown with Standard 10 ft. Flat Ceiling Application & Gas Burner Custom Lengths & Anchor Options Available

PROPRIETARY AND CONFIDENTIAL

THE INFORMATION CONTAINED IN THIS DRAWING IS THE SOLE PROPERTY OF CUSTOM FIREPLACE DESIGN. ANY REPRODUCTION IN PART OR AS A WHOLE WITHOUT THE WRITTEN PERMISSION OF CUSTOM FIREPLACE DESIGN IS PROHIBITED.

UNLESS OTHERWISE SPECIFIED

DIMENSIONS ARE IN INCHES
TOLERANCES:
FRACTIONAL $\pm 1/16$
ANGULAR: MACH $\pm 1^\circ$ BEND $\pm 0.5^\circ$
TWO PLACE DECIMAL ± 0.01
THREE PLACE DECIMAL ± 0.005



PROJECT
NICO | Suspended Hood with Base Gas Fireplace

PART NUMBER	REV 0
-------------	----------

DESCRIPTION
Optional Decorative Cover

	NAME	DATE (mm/dd/yyyy)
DRAWN	mpanchal	2020-06-26
CHECKED	MV	2020-06-26
APPROVED	--	NA

SIZE **B** SHEET 7 OF 7 DO NOT SCALE DRAWING