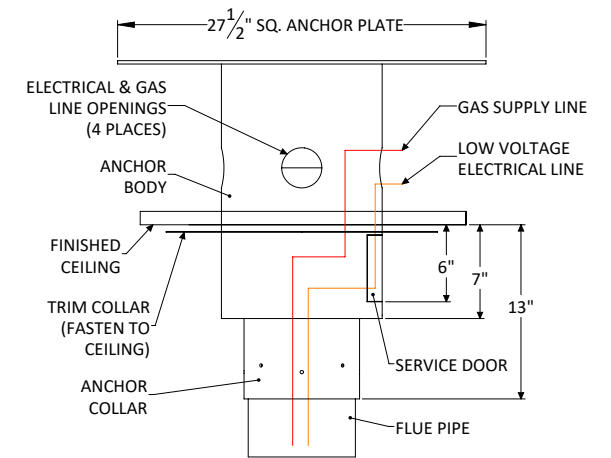


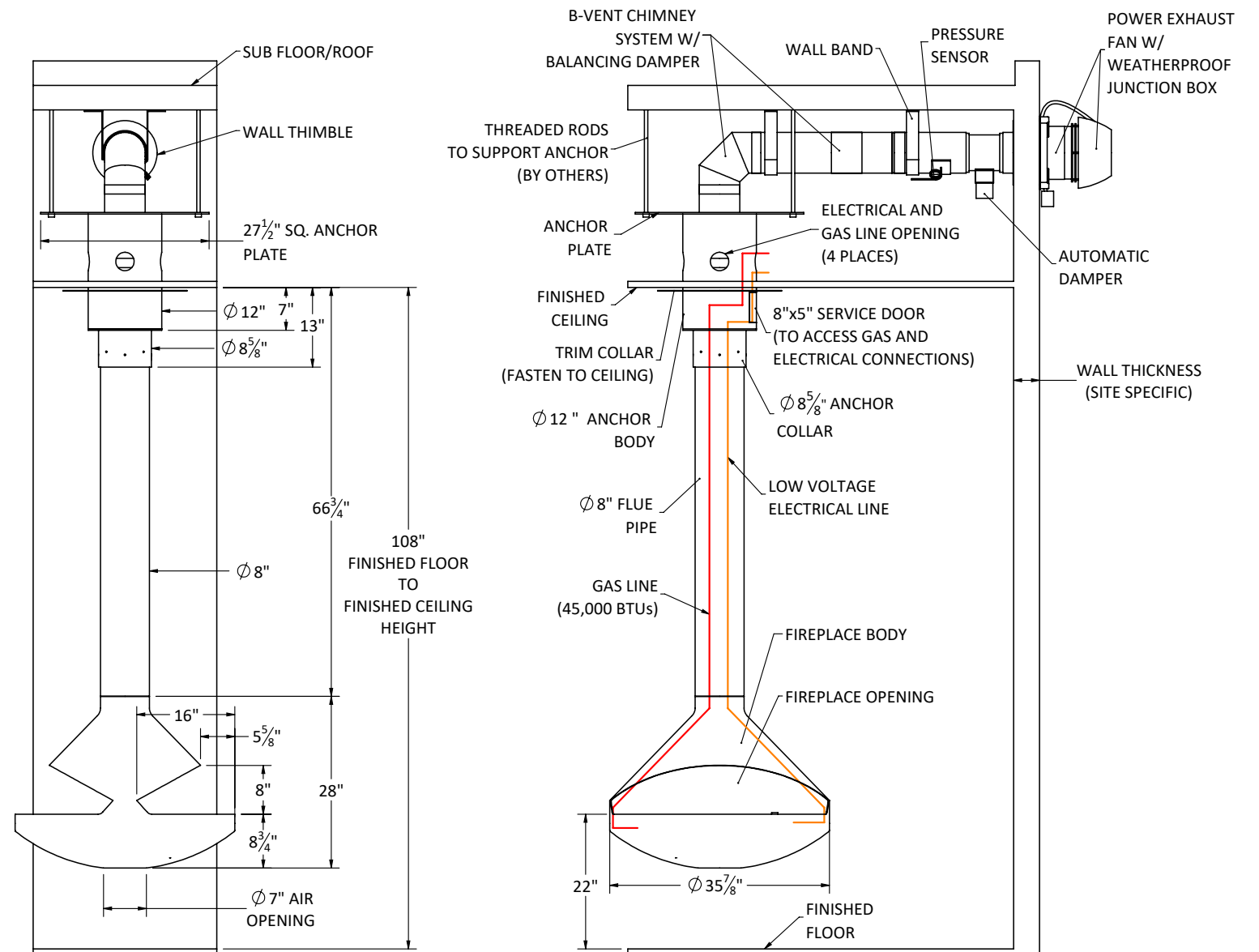
AIDAN See-Thru | Suspended Gas Fireplace (Horizontal Termination)



| Standard 9ft. Ceiling Application approx. weights | |
|---|-----------------|
| Flat Anchor | 85 lbs. |
| Flue Pipe | 60 lbs. |
| Fireplace Body | 155 lbs. |
| Total Standard Fireplace | 300 lbs. |



STANDARD FLAT ANCHOR



LEFT SIDE ELEVATION

FRONT ELEVATION

Shown with standard 9 ft. ceiling application and flat anchor option.



Fireplaces have been tested and proved to comply with: ANSI Z21.50/CSA 2.22 Vented Gas Fireplace. Certified under: ICC-ES PMG-1290

- Natural Gas or Propane fueled.
- Natural Gas Burner: approx. 45,000 BTUs.
- Propane Burner: approx. 40,000 BTUs.
- 120 Volt 15 Amp required for venting.
- Gas & Electrical connection to be completed on-site at service door.
- 6" ID B-Vent chimney system required.
- All standard fireplaces painted in factory matte black finish. Custom paint colors and patina finishes available.
- Switch operation on wall (not included).
- All dimensions are in inches.
- Exact measurements may vary $\pm 1/4"$.

- Optional decorative chimney cover available at add'l cost.
- Custom anchor options available at add'l cost.
- Enervex Intelli Draft and Damper System.
- Optional Inline Fan with flush terminal available. Inquire for details.

CLEARANCE TO COMBUSTIBLES

1. 12" min. from floor to the bottom of the fireplace.
2. A minimum 12" distance between a combustible wall and fireplace body is required.
3. 1" where anchor or flue crosses the ceiling.
4. 1" where the chimney system terminates at wall outlet