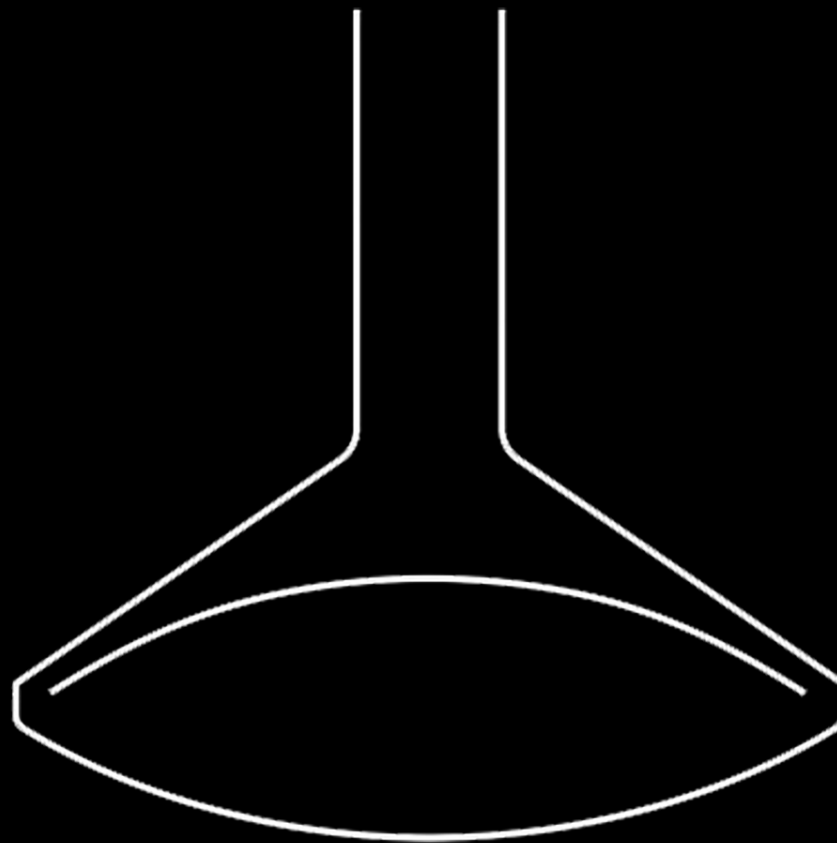


VITA | Fireplaces

Suspended Vapor-fire collection



CF + D | custom fireplace design

www.customfireplacedesign.com

Mar 15, 2022



CF + D | custom fireplace design has mastered the skills and technology required to design and fabricate highly innovative, one-of-a-kind fireplaces often in dimensions and finishes that have been created for the first time. With a team of highly skilled craftsmen proficient in the art of shaping, fabricating and welding steel materials CF + D is committed to breaking the paradigms and pushing the boundaries of fireplace design possibilities. With enthusiasm and passion for our craft of custom designing and fabricating unique fireplaces, we outperform expectations providing solutions for our client's design criteria.

Now as a full design/build manufacturing company, CF + D is introducing their own production line of artistic contemporary designs.

VITA Fireplaces: the first exclusive collection of uniquely designed and fabricated, suspended and built-in linear fireplaces incorporating the Vapor-Fire burner technology system. The discovery of this new technology which creates the illusion of a realistic fire flame using water vapor was the inspiration for our innovative VITA Fireplaces.

Vapor-Fire uses regular tap water as a fuel source, creating a viable solution for installations in multi-family buildings, hospitality suites, lobbies, restaurants and private homes. Free from venting requirements, zero combustible issues and no safety liabilities. All Vapor-Fire models are 100% efficient adding to your LEED Certification Score.

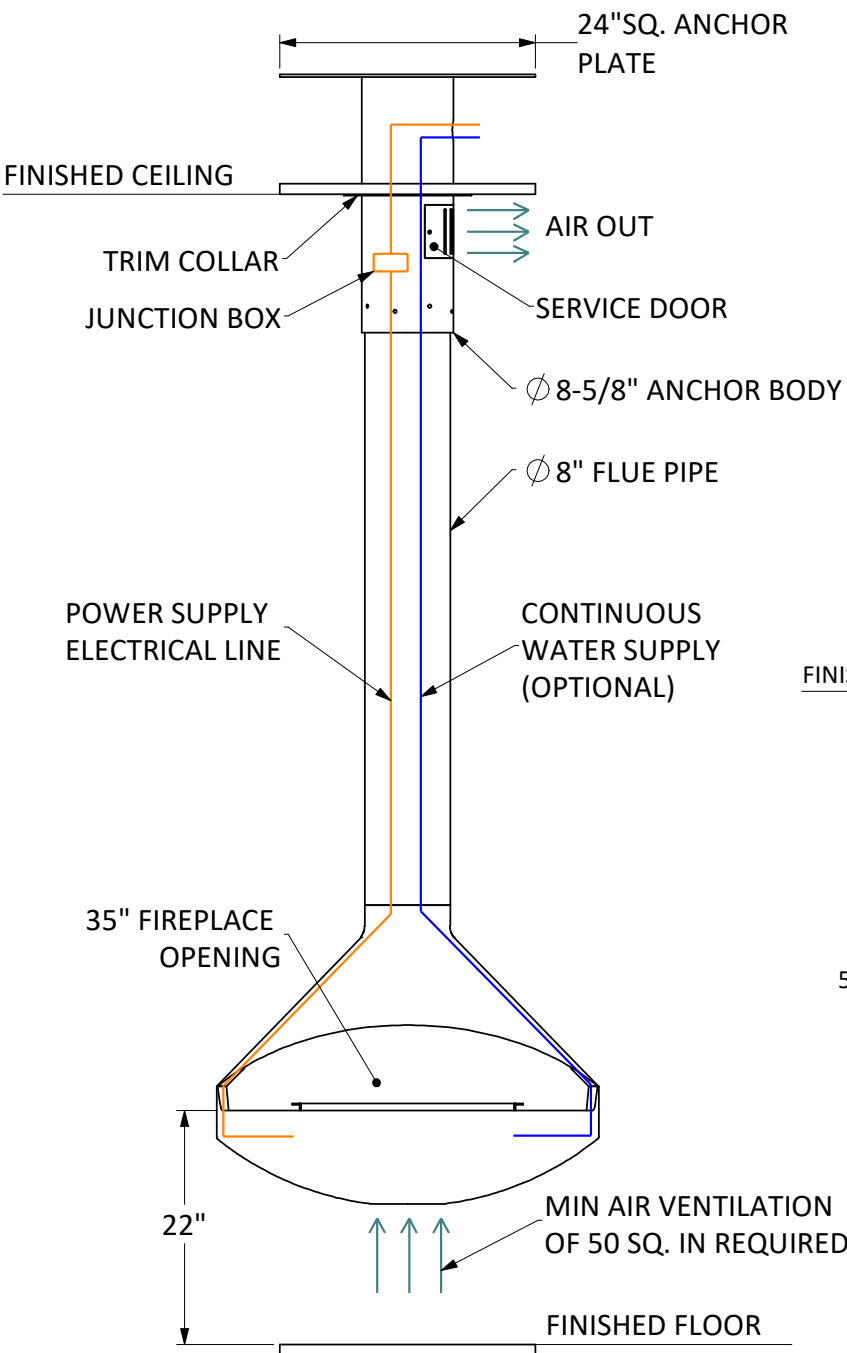


- Vapor-Fire burner technology
- Realistic flame without heat
- No venting requirements
- Safe to the touch
- Fueled by regular tap water
- 120 Volt 15 Amp-GFCI
- All fireplaces come in black matte finish
- Custom colors and patina finishes available
- Heat available, most models
- Custom anchor options available.

OPTION 1:
Plumbed-In to main source water line, 1/2" reduced to 1/4" factory set connection.

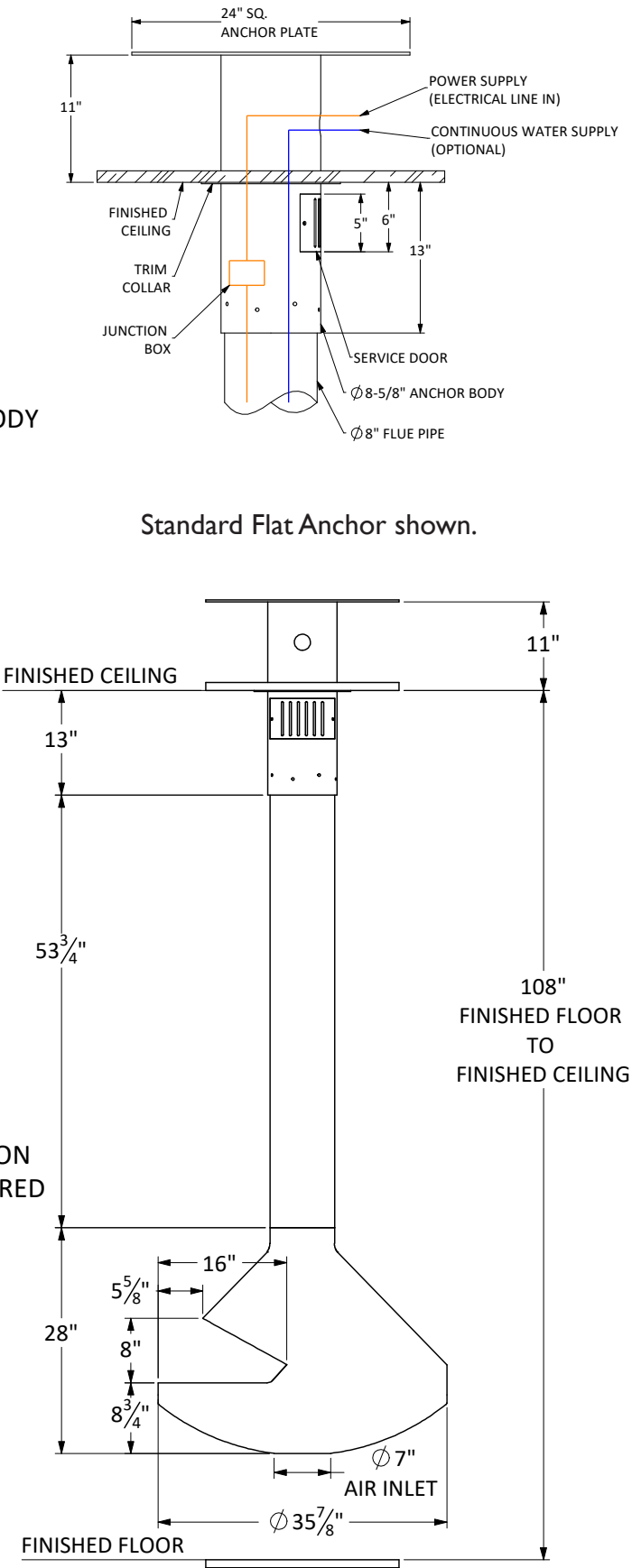
OPTION 2:
Removable 1L container for manual fill approx. 8-10 hour burn time.

Recommended: Leak detection sensor for potential leak management.



All dimensions are in Inches
Exact measurements may vary ±1/2".
Shown with standard 9 ft. ceiling application.

Fireplace Body	165 lbs.
Flue Pipe	11 lbs. per foot
Flat Anchor	77 lbs.



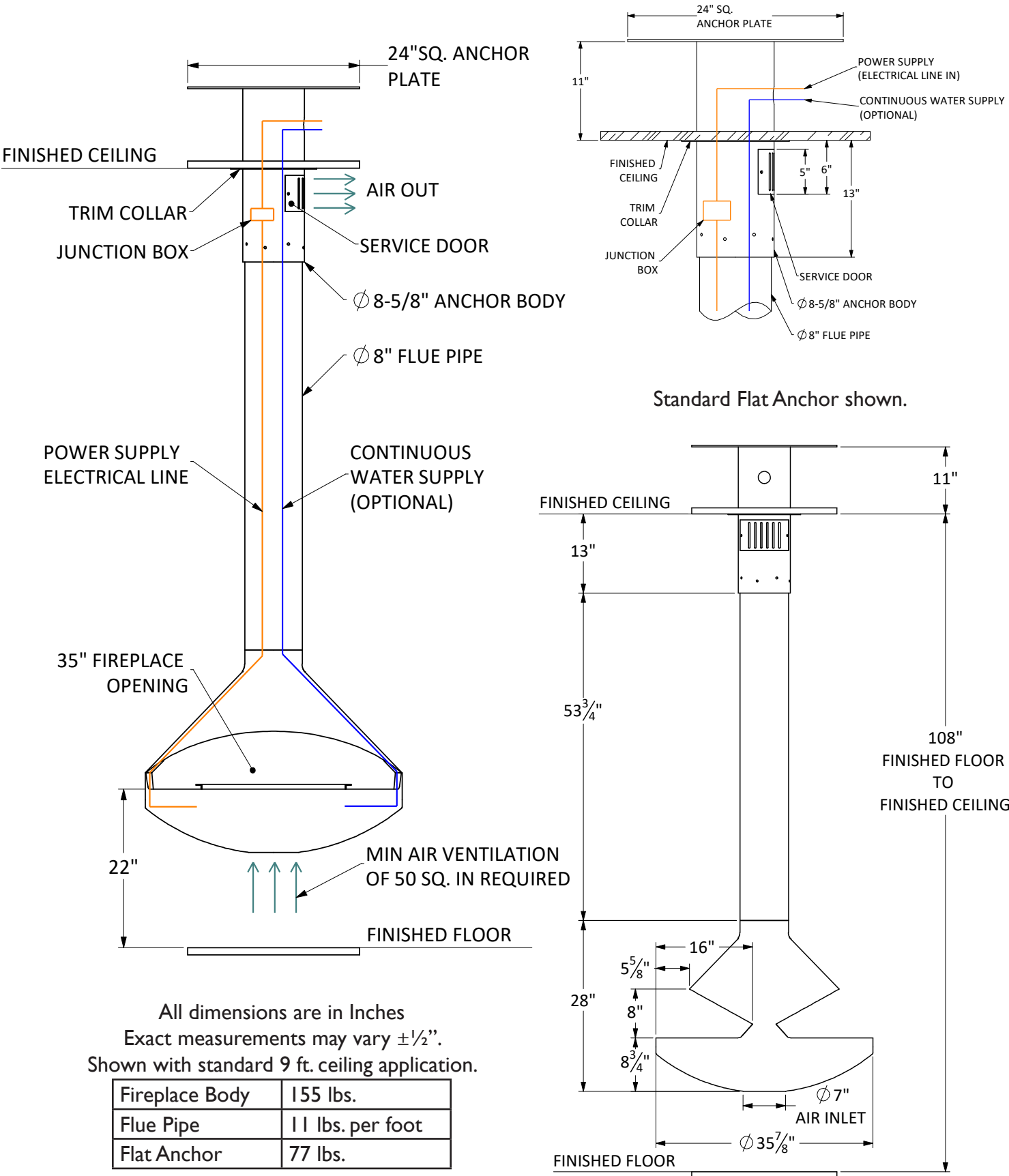


- Vapor-Fire burner technology
- Realistic flame without heat
- No venting requirements
- Safe to the touch
- Fueled by regular tap water
- 120 Volt 15 Amp-GFCI
- All fireplaces come in black matte finish
- Custom colors and patina finishes available
- Heat available, most models
- Custom anchor options available.

OPTION 1:
Plumbed-In to main source water line, 1/2" reduced to 1/4" factory set connection.

OPTION 2:
Removable 1L container for manual fill approx. 8-10 hour burn time.

Recommended: Leak detection sensor for potential leak management.



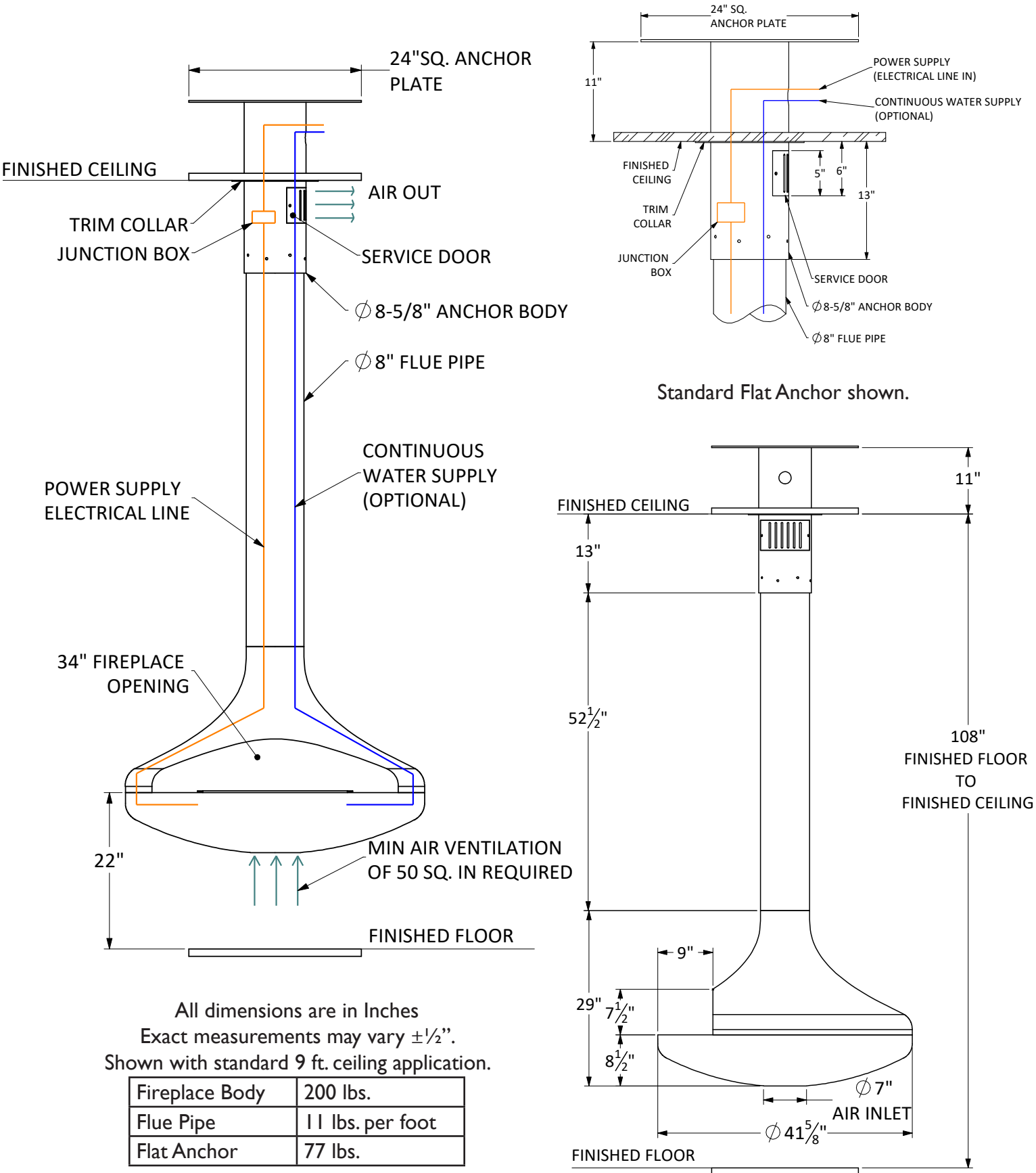


- Vapor-Fire burner technology
- Realistic flame without heat
- No venting requirements
- Safe to the touch
- Fueled by regular tap water
- 120 Volt 15 Amp-GFCI
- All fireplaces come in black matte finish
- Custom colors and patina finishes available
- Heat available, most models
- Custom anchor options available.

OPTION 1:
Plumbed-In to main source water line, 1/2" reduced to 1/4" factory set connection.

OPTION 2:
Removable 1L container for manual fill approx. 8-10 hour burn time.

Recommended: Leak detection sensor for potential leak management.



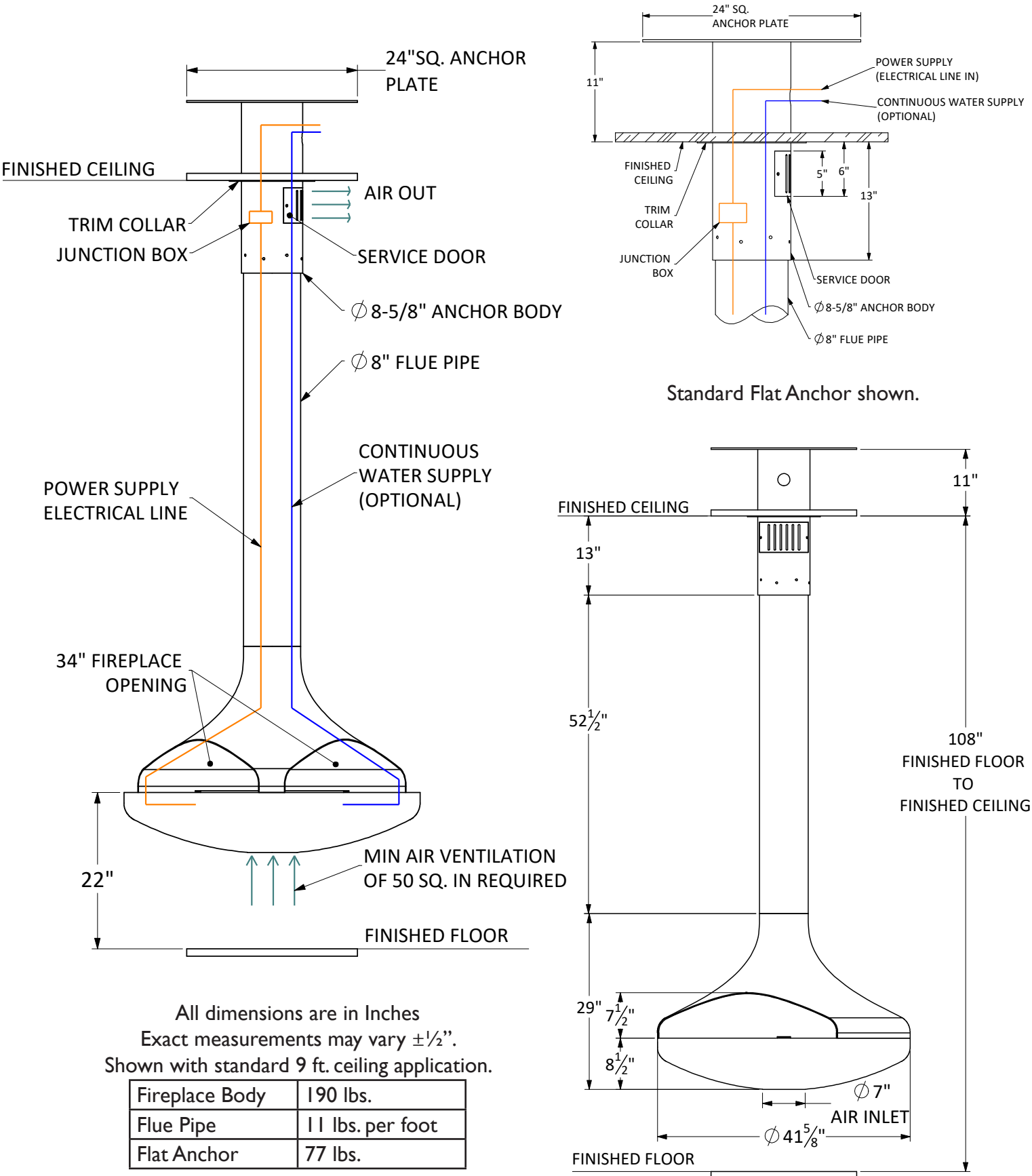


- Vapor-Fire burner technology
- Realistic flame without heat
- No venting requirements
- Safe to the touch
- Fueled by regular tap water
- 120 Volt 15 Amp-GFCI
- All fireplaces come in black matte finish
- Custom colors and patina finishes available
- Heat available, most models
- Custom anchor options available.

OPTION 1:
Plumbed-In to main source water line, 1/2" reduced to 1/4" factory set connection.

OPTION 2:
Removable 1L container for manual fill approx. 8-10 hour burn time.

Recommended: Leak detection sensor for potential leak management.



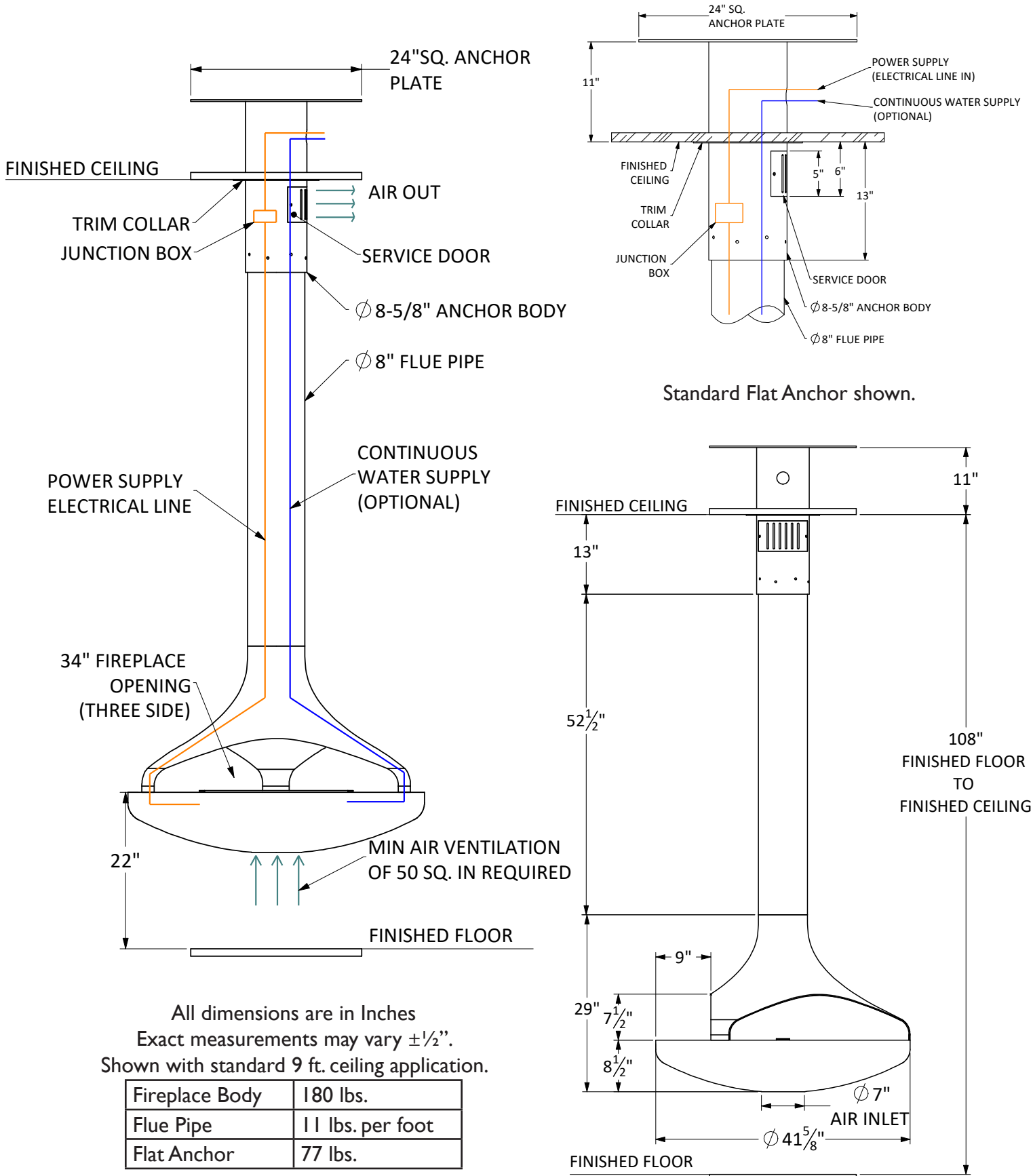


- Vapor-Fire burner technology
- Realistic flame without heat
- No venting requirements
- Safe to the touch
- Fueled by regular tap water
- 120 Volt 15 Amp-GFCI
- All fireplaces come in black matte finish
- Custom colors and patina finishes available
- Heat available, most models
- Custom anchor options available.

OPTION 1:
Plumbed-In to main source water line, 1/2" reduced to 1/4" factory set connection.

OPTION 2:
Removable 1L container for manual fill approx. 8-10 hour burn time.

Recommended: Leak detection sensor for potential leak management.



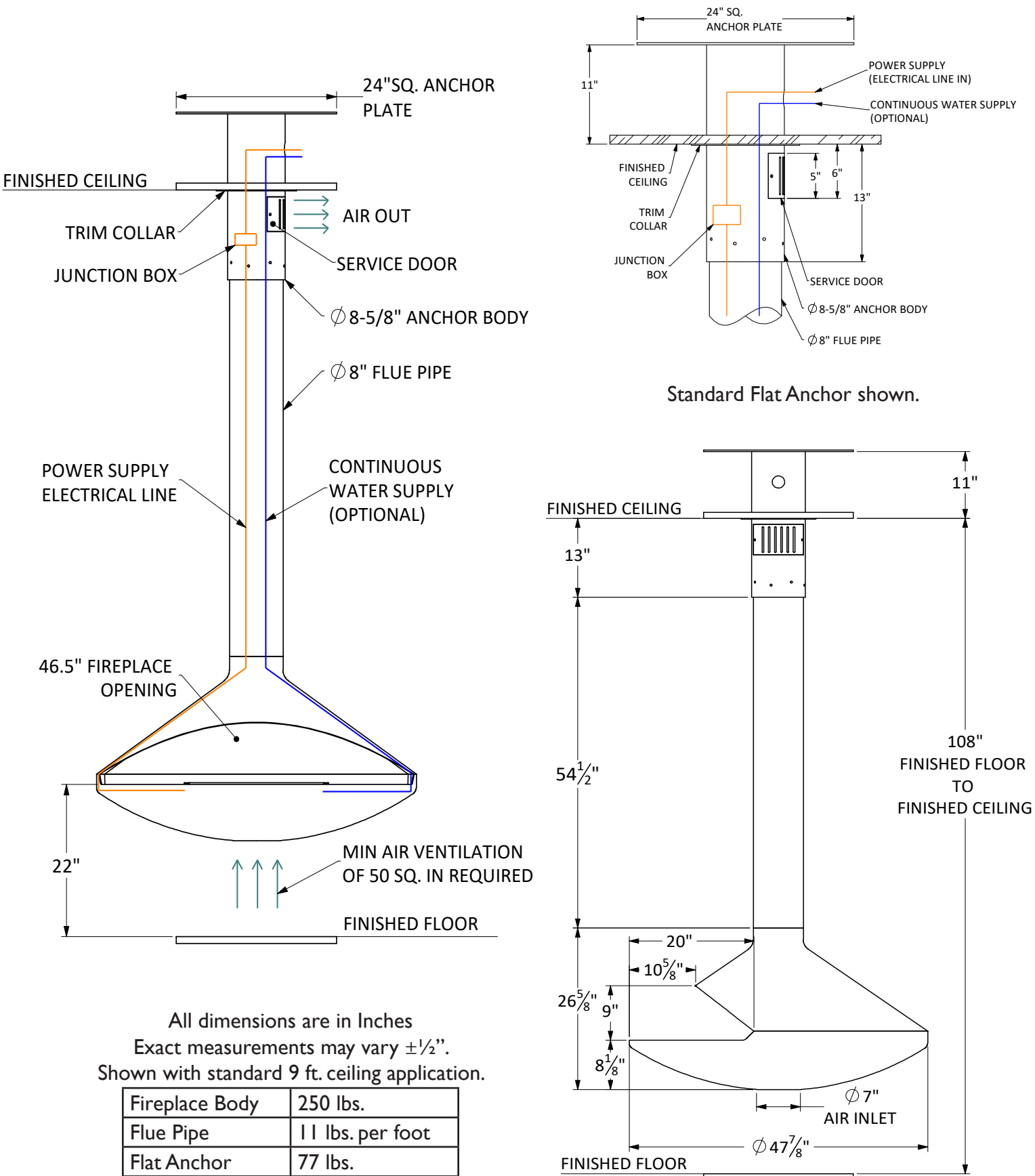


- Vapor-Fire burner technology
- Realistic flame without heat
- No venting requirements
- Safe to the touch
- Fueled by regular tap water
- 120 Volt 15 Amp-GFCI
- All fireplaces come in black matte finish
- Custom colors and patina finishes available
- Heat available, most models
- Custom anchor options available.

OPTION 1:
Plumbed-In to main source water line, 1/2" reduced to 1/4" factory set connection.

OPTION 2:
Removable 1L container for manual fill approx. 8-10 hour burn time.

Recommended: Leak detection sensor for potential leak management.



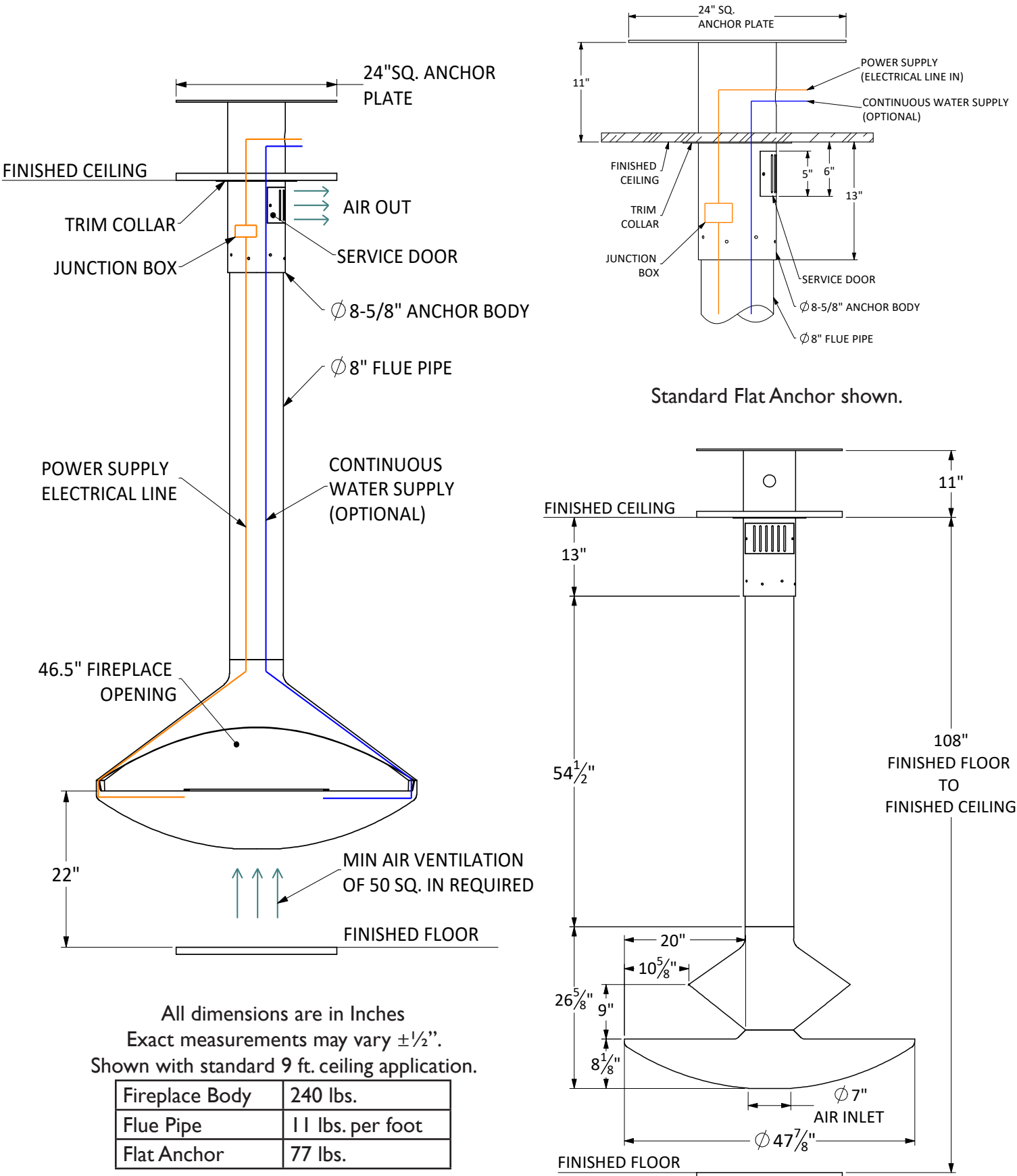


- Vapor-Fire burner technology
- Realistic flame without heat
- No venting requirements
- Safe to the touch
- Fueled by regular tap water
- 120 Volt 15 Amp-GFCI
- All fireplaces come in black matte finish
- Custom colors and patina finishes available
- Heat available, most models
- Custom anchor options available.

OPTION 1:
Plumbed-In to main source water line, 1/2" reduced to 1/4" factory set connection.

OPTION 2:
Removable 1L container for manual fill approx. 8-10 hour burn time.

Recommended: Leak detection sensor for potential leak management.



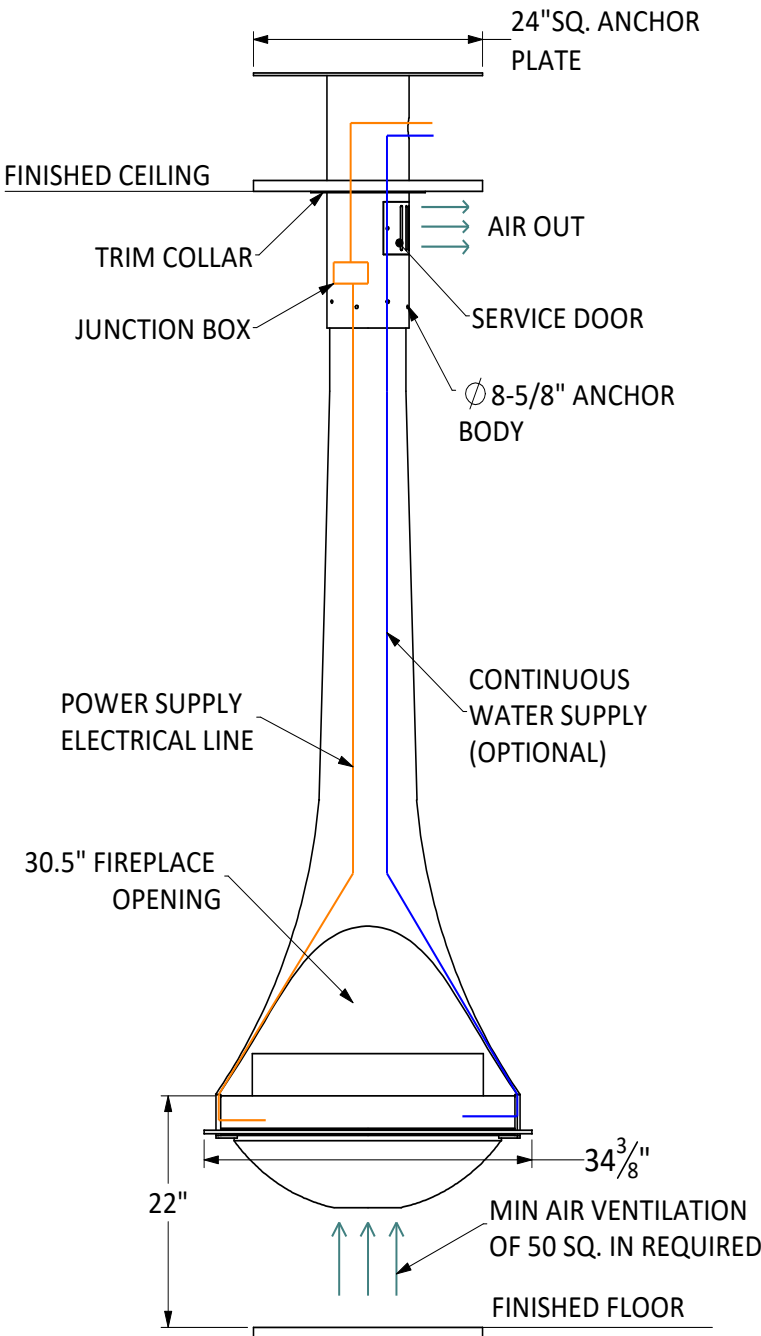


- Vapor-Fire burner technology
- Realistic flame without heat
- No venting requirements
- Safe to the touch
- Fueled by regular tap water
- 120 Volt 15 Amp-GFCI
- All fireplaces come in black matte finish
- Custom colors and patina finishes available
- Heat available, most models
- Custom anchor options available.

OPTION 1:
Plumbed-In to main source water line, 1/2" reduced to 1/4" factory set connection.

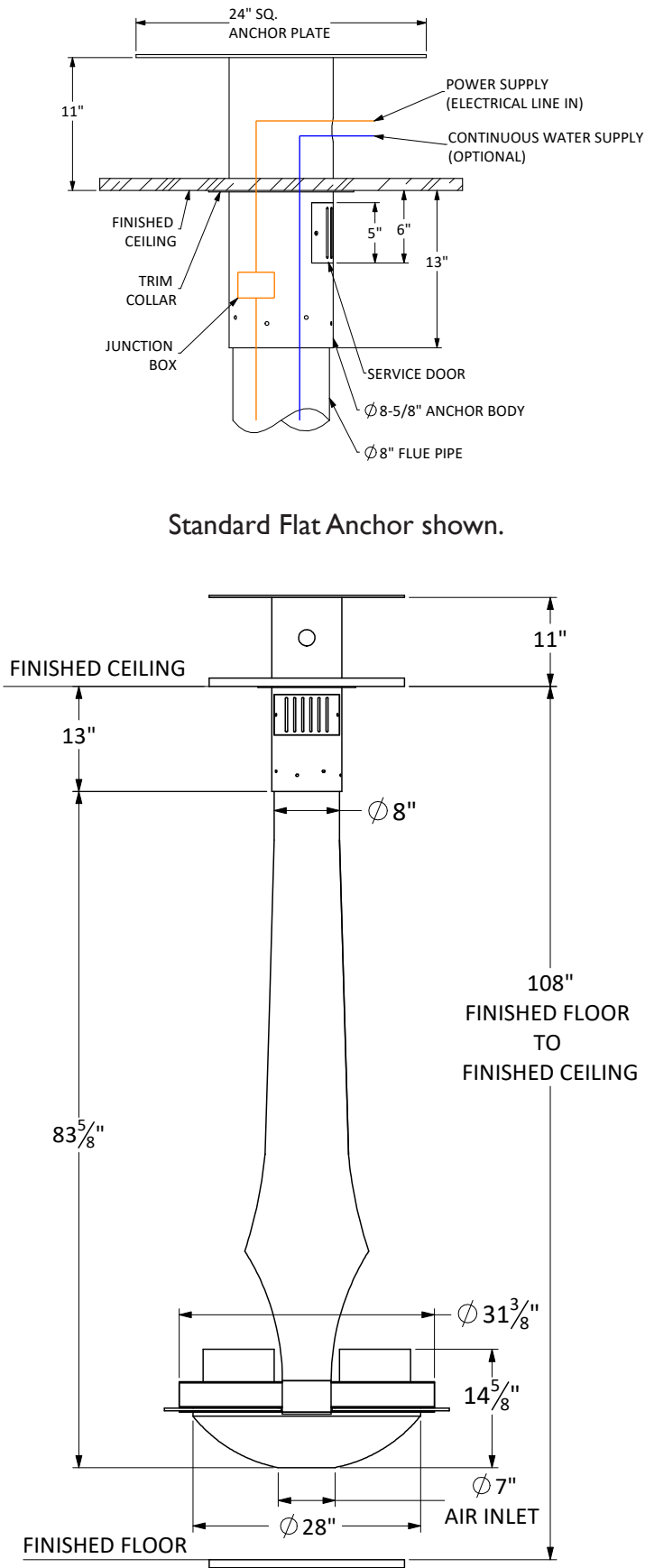
OPTION 2:
Removable 1L container for manual fill approx. 8-10 hour burn time.

Recommended: Leak detection sensor for potential leak management.



All dimensions are in Inches
Exact measurements may vary ±1/2".
Shown with standard 9 ft. ceiling application.

Fireplace Body	150 lbs.
Flue Pipe	11 lbs. per foot
Flat Anchor	77 lbs.



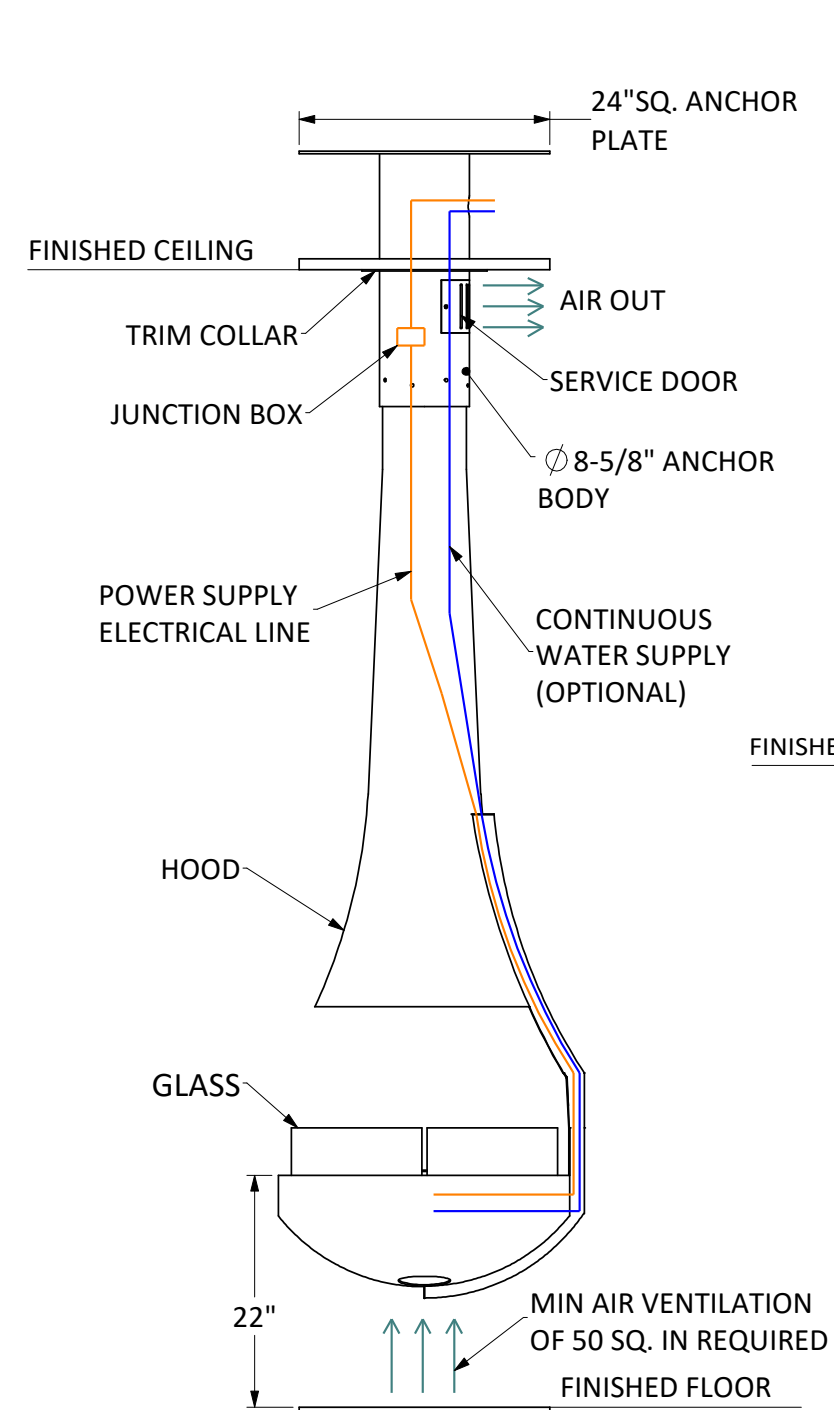


- Vapor-Fire burner technology
- Realistic flame without heat
- No venting requirements
- Safe to the touch
- Fueled by regular tap water
- 120 Volt 15 Amp-GFCI
- All fireplaces come in black matte finish
- Custom colors and patina finishes available
- Heat available, most models
- Custom anchor options available.

OPTION 1:
Plumbed-In to main source water line, 1/2" reduced to 1/4" factory set connection.

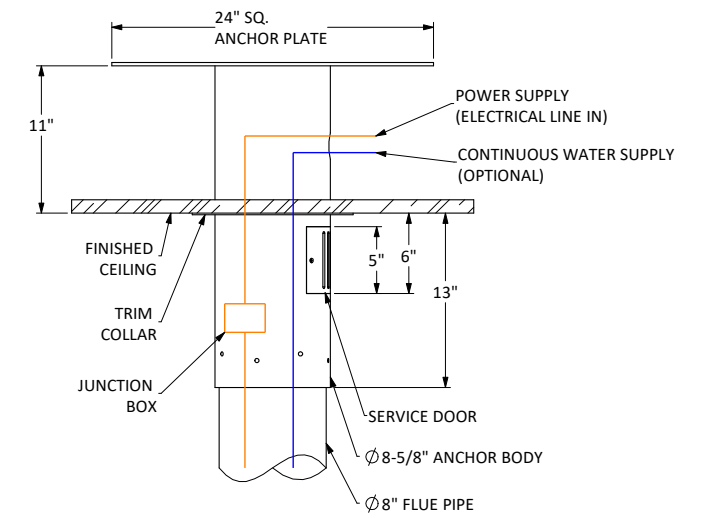
OPTION 2:
Removable 1L container for manual fill approx. 8-10 hour burn time.

Recommended: Leak detection sensor for potential leak management.

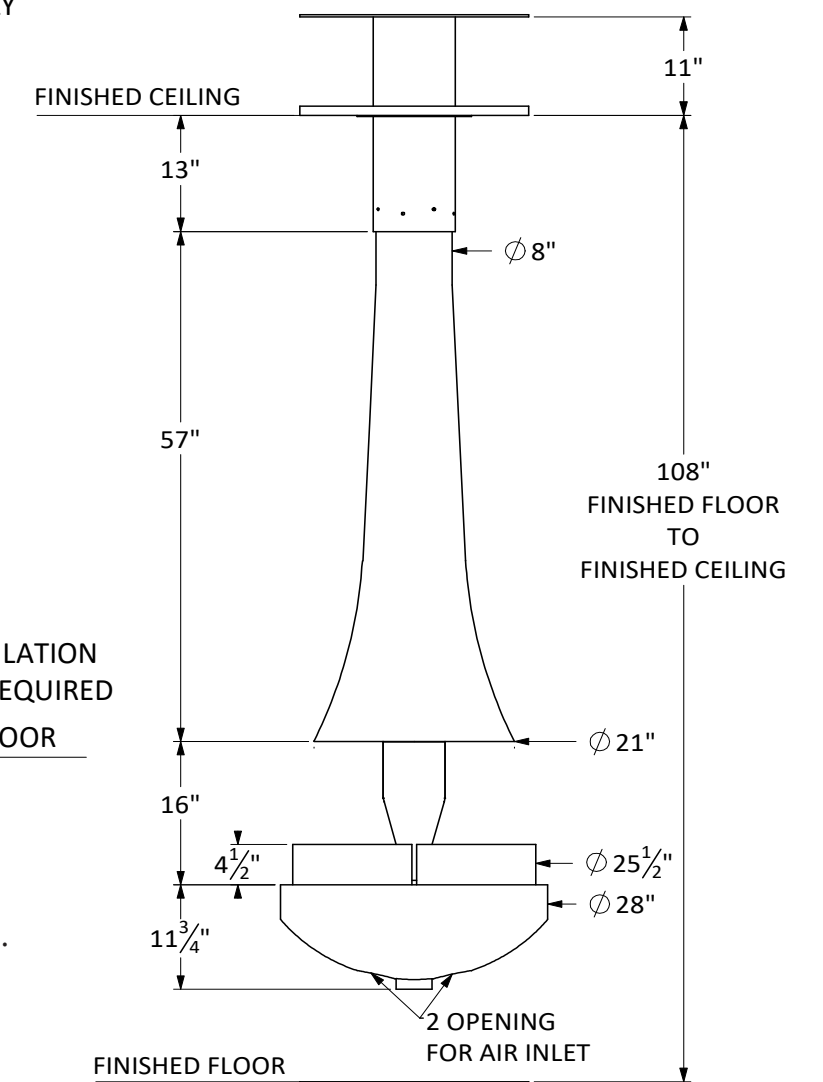


All dimensions are in Inches
Exact measurements may vary $\pm 1/2$ ".
Shown with standard 9 ft. ceiling application.

Fireplace Body	150 lbs.
Flue Pipe	11 lbs. per foot
Flat Anchor	77 lbs.



Standard Flat Anchor shown.



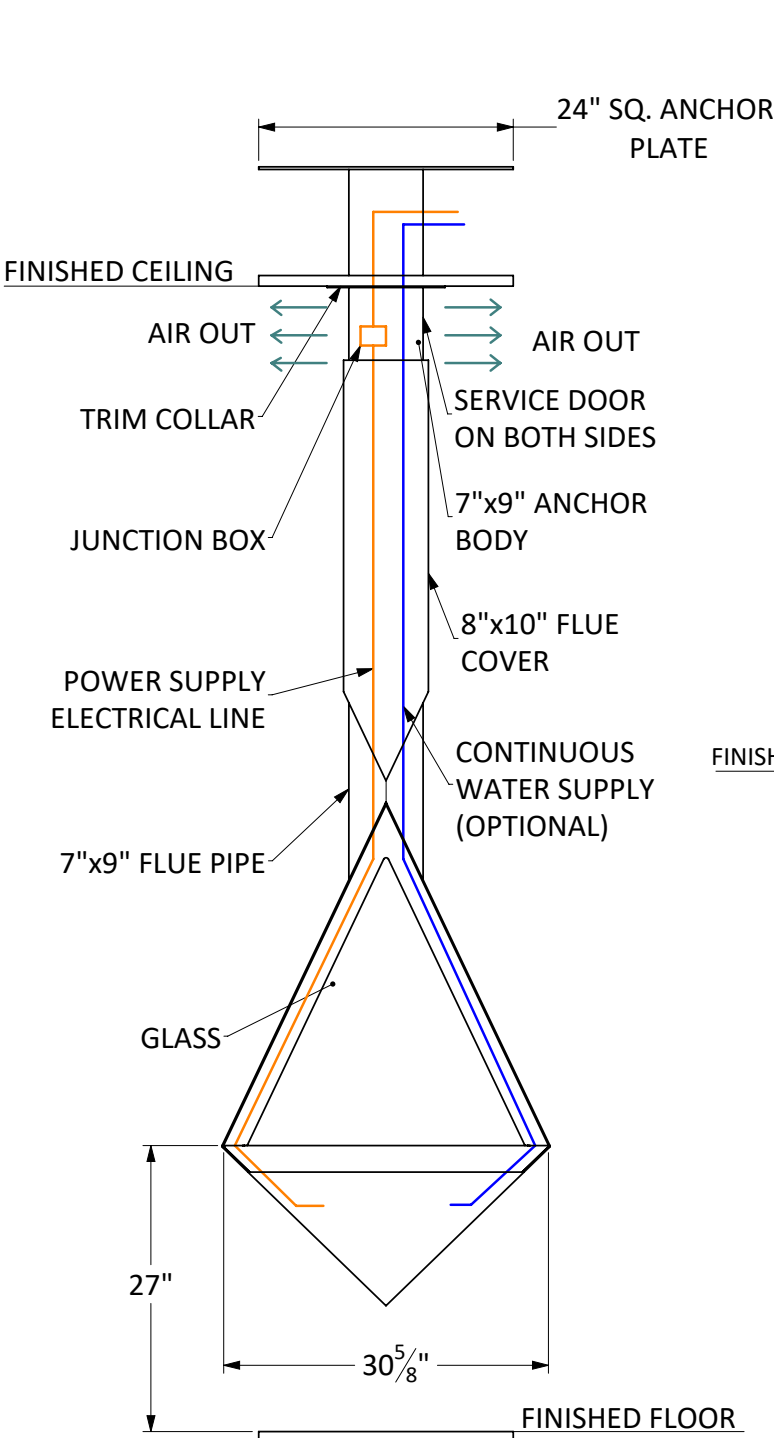


- Vapor-Fire burner technology
- Realistic flame without heat
- No venting requirements
- Safe to the touch
- Fueled by regular tap water
- 120 Volt 15 Amp-GFCI
- All fireplaces come in black matte finish
- Custom colors and patina finishes available
- Heat available, most models
- Custom anchor options available.

OPTION 1:
Plumbed-In to main source water line, 1/2" reduced to 1/4" factory set connection.

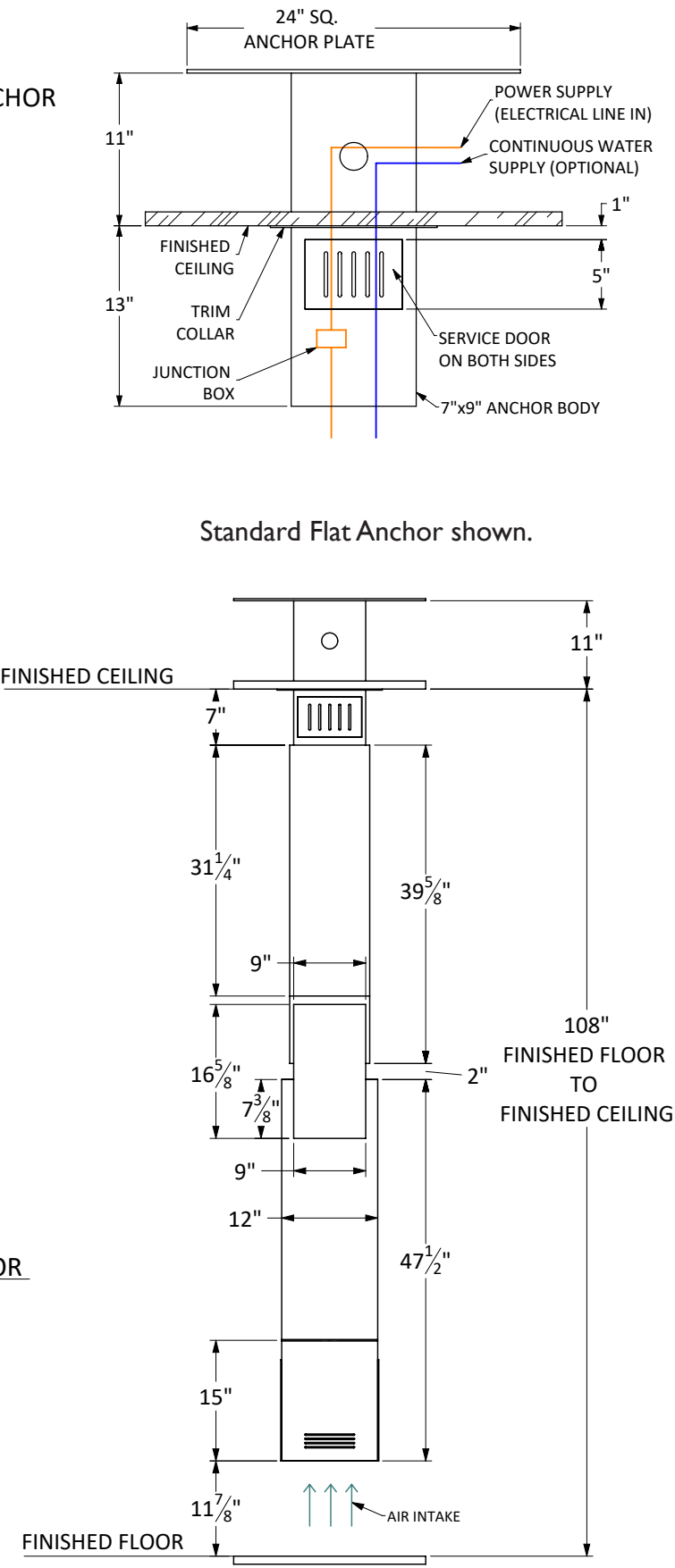
OPTION 2:
Removable 1L container for manual fill approx. 8-10 hour burn time.

Recommended: Leak detection sensor for potential leak management.



All dimensions are in Inches
Exact measurements may vary ±1/2".
Shown with standard 9 ft. ceiling application.

Fireplace Body	150 lbs.
Flue Pipe	11 lbs. per foot
Flat Anchor	77 lbs.



VITA | Fireplaces



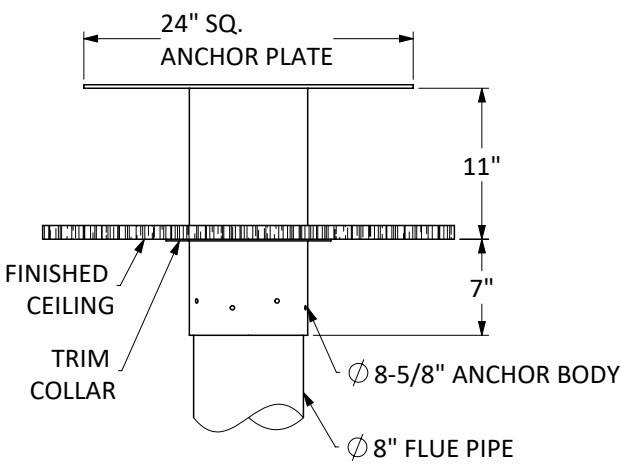
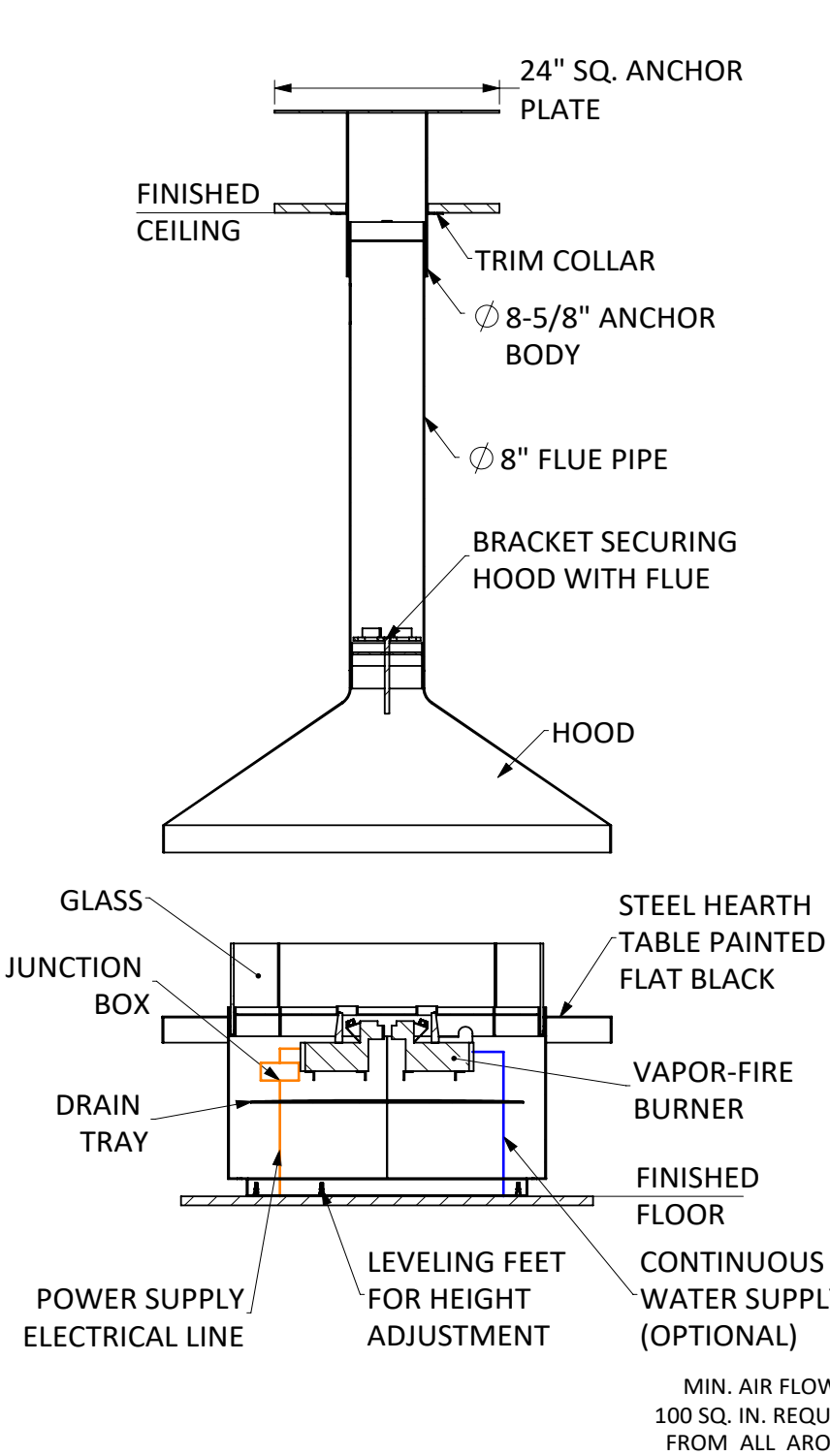
- Vapor-Fire burner technology
- Realistic flame without heat
- No venting requirements
- Safe to the touch
- Fueled by regular tap water
- 120 Volt 15 Amp-GFCI
- All fireplaces come in black matte finish
- Custom colors and patina finishes available
- Heat available, most models
- Custom anchor options available.
- Leak detection sensor for potential leak management recommended but not required.

OPTION 1:
Plumbed-In to main source water line, 1/2" reduced to 1/4" factory set connection.

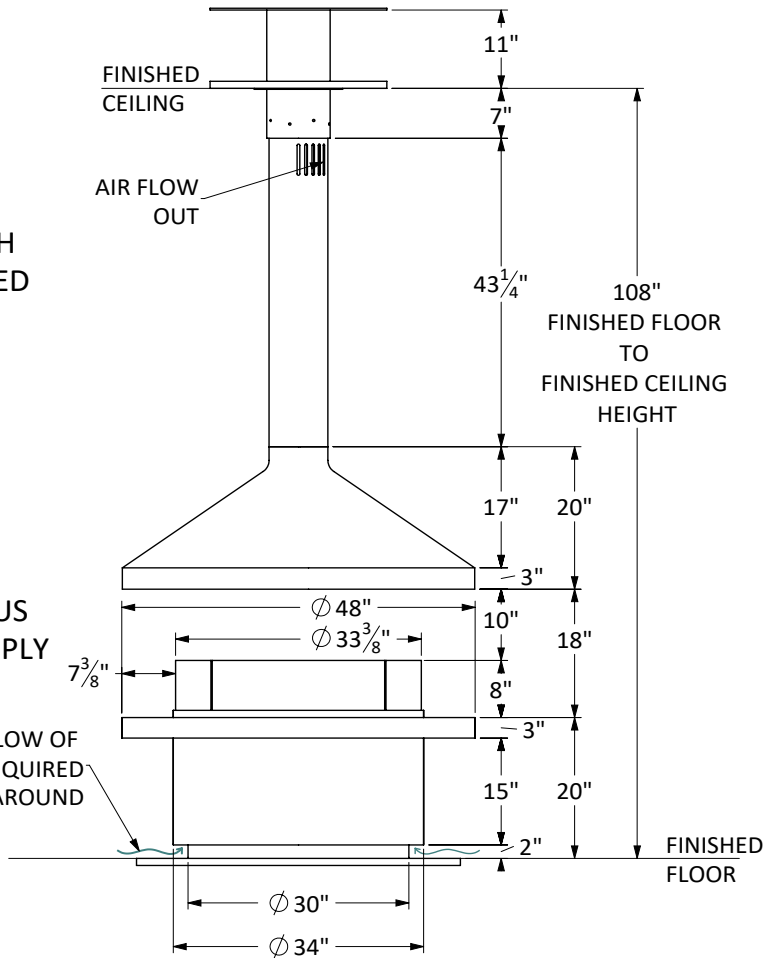
OPTION 2:
Removable 1L container for manual fill approx. 8-10 hour burn time.

Main electrical and optional continuous water line to feed from floor to junction box located inside fireplace base.

BELLA | Suspended Hood with Base Vapor-Fire



Standard Flat Anchor shown.



All dimensions are in Inches
Exact measurements may vary $\pm 1/2$ "
Shown with standard 9 ft. ceiling application.

Fireplace Base	165 lbs.
Flue Pipe and Hood	135 lbs.
Flat Anchor	77 lbs.

VITA | Fireplaces



- Vapor-Fire burner technology
- Realistic flame without heat
- No venting requirements
- Safe to the touch
- Fueled by regular tap water
- 120 Volt 15 Amp-GFCI
- All fireplaces come in black matte finish
- Custom colors and patina finishes available
- Heat available, most models
- Custom anchor options available.
- Leak detection sensor for potential leak management recommended but not required.

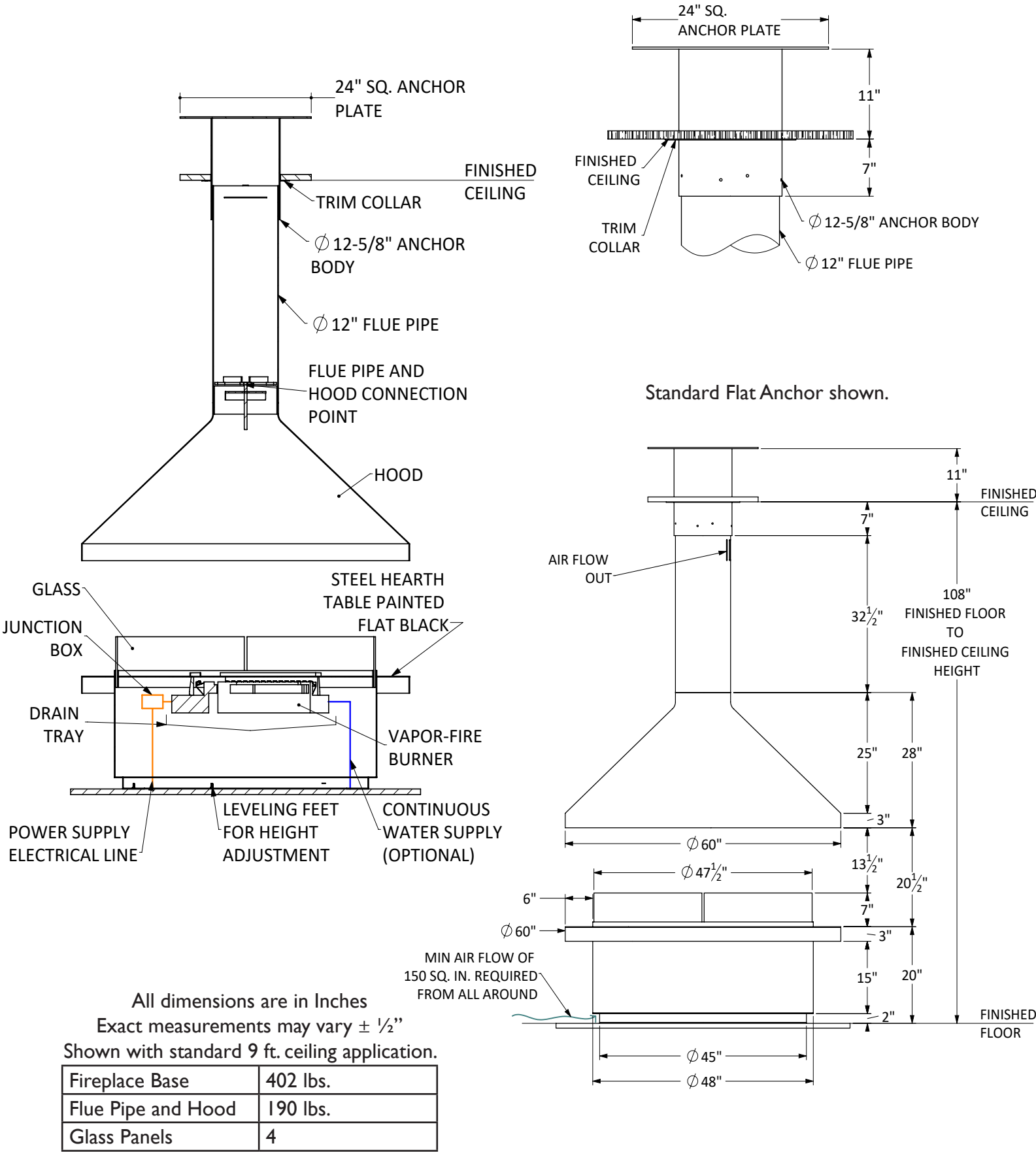
OPTION 1:
Plumbed-In to main source water line, 1/2" reduced to 1/4" factory set connection.

OPTION 2:
Removable 1L container for manual fill approx. 8-10 hour burn time.

Main electrical and optional continuous water line to feed from floor to junction box located inside fireplace base.

Shown with optional glass hearth extension

MAXIM | Suspended Hood with Base Vapor-Fire



VITA | Fireplaces



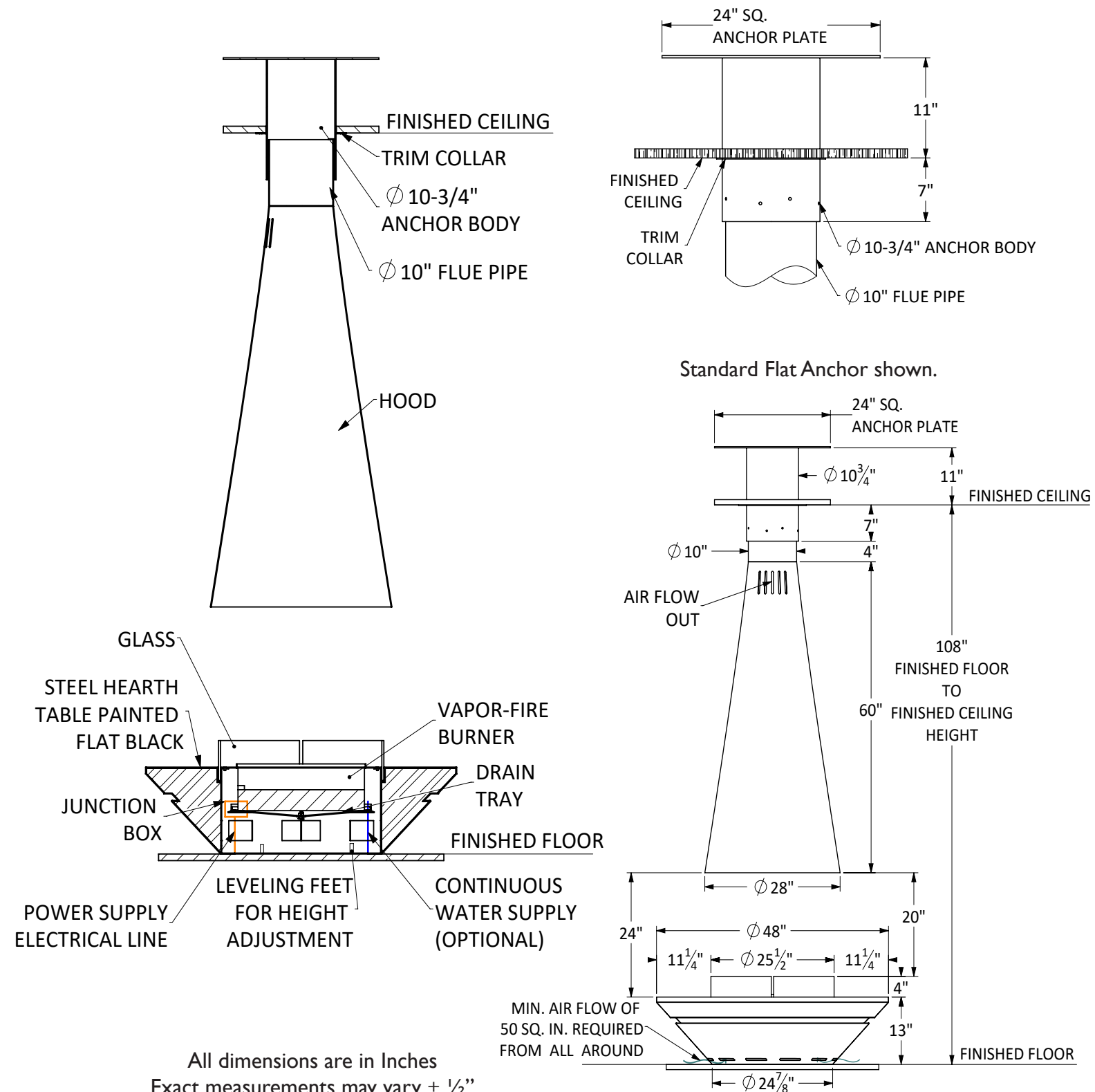
- Vapor-Fire burner technology
- Realistic flame without heat
- No venting requirements
- Safe to the touch
- Fueled by regular tap water
- 120 Volt 15 Amp-GFCI
- All fireplaces come in black matte finish
- Custom colors and patina finishes available
- Heat available, most models
- Custom anchor options available.
- Leak detection sensor for potential leak management recommended but not required.

OPTION 1:
Plumbed-In to main source water line, 1/2" reduced to 1/4" factory set connection.

OPTION 2:
Removable 1L container for manual fill approx. 8-10 hour burn time.

Main electrical and optional continuous water line to feed from floor to junction box located inside fireplace base.

MYSTIQUE | Suspended Hood with Base Vapor-Fire



All dimensions are in Inches
Exact measurements may vary $\pm 1/2\text{'}$
Shown with standard 9 ft. ceiling application.

Fireplace Base	230 lbs.
Flue Pipe and Hood	140 lbs.
Flat Anchor	75 lbs.

VITA | Fireplaces



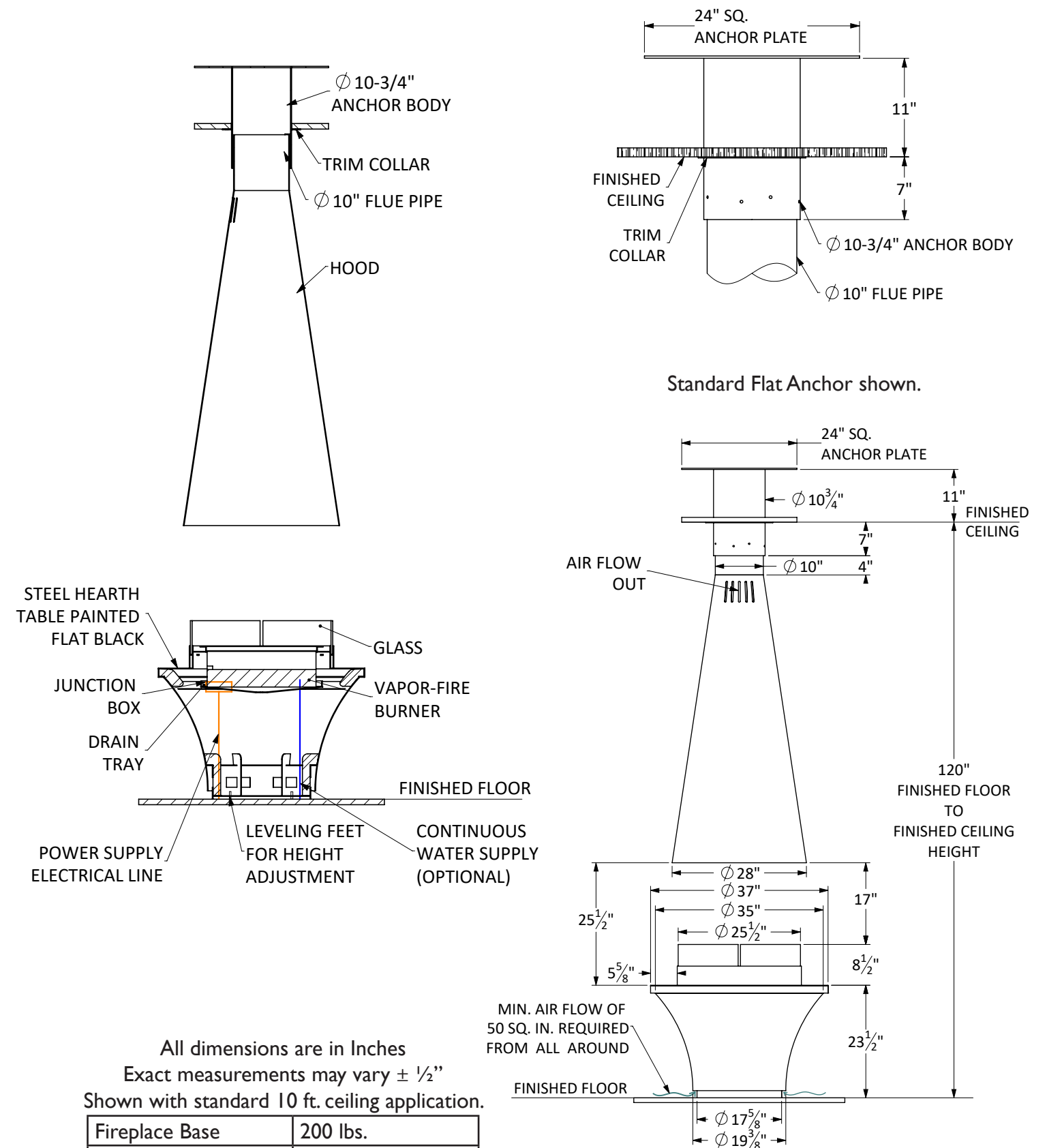
- Vapor-Fire burner technology
- Realistic flame without heat
- No venting requirements
- Safe to the touch
- Fueled by regular tap water
- 120 Volt 15 Amp-GFCI
- All fireplaces come in black matte finish
- Custom colors and patina finishes available
- Heat available, most models
- Custom anchor options available.
- Leak detection sensor for potential leak management recommended but not required.

OPTION 1:
Plumbed-In to main source water line, ½" reduced to ¼" factory set connection.

OPTION 2:
Removable 1L container for manual fill approx.
8-10 hour burn time.

Main electrical and optional continuous water line to feed from floor to junction box located inside fireplace base.

NICO | Suspended Hood with Base Vapor-Fire



Fireplace Base	200 lbs.
Flue Pipe and Hood	140 lbs.
Flat Anchor	75 lbs.

VITA Fireplaces Suspended Vapor-Fire Collection

North American Designed and Manufactured by
CF + D | custom fireplace design

VITA Fireplaces models are available in exclusive Single-Sided, See-Thru, Double-Sided and Triple-Sided views allowing the flame to be viewed from all angles.

Each unique model can be built to incorporate the Vapor-Fire burner technology system using water as a fuel source. With the variety of styles we have created, our clients now have an alternative fire-feature to fit into many projects whether residential, commercial or the hospitality sector.

Included with the purchase of a VITA Fireplaces Suspended Vapor-Fire model are the following:

Vapor-Fire Burner Technology

Manual Fill Option for 8 - 10 hour burn time, or Plumbed-In Option for continuous burn time.

Flue length for Standard 9ft. Ceiling

Standard Flat Anchor

All fireplaces comes in Standard Factory Matte Black Paint Finish

Client's Choice of One Décor Media Option

There are a number of premium décor media option choices displayed in this booklet. We hope this is helpful in making your selection to personalize your unique fireplace choice.

Please contact us to begin your next project.



Our creative design solutions are waiting!

Décor Media Options: Logs | Glass | Rocks



Canoe Birch



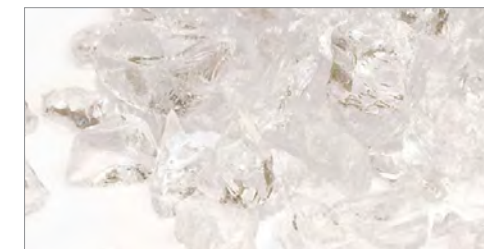
Central Park



Riverbed



Black Crushed Glass



White Crushed Glass



Amber Crushed Glass



Midnight Black



White Marble



Sherlock Grey

*Custom Paint Color Choices



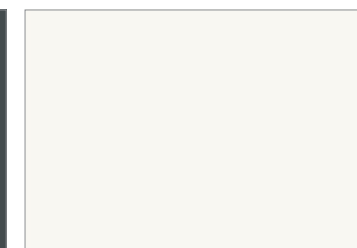
RAL 9017 Traffic



RAL 3002 Carmine Red

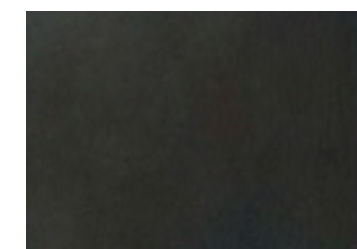


RAL 7011 Iron Grey

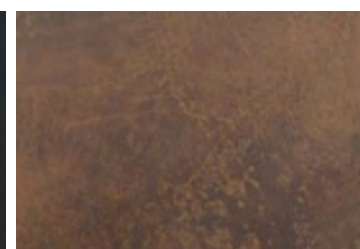


RAL 9010 Pure White

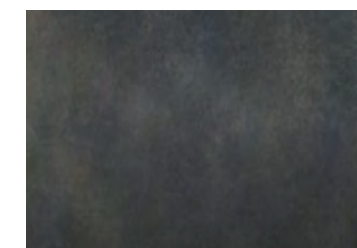
*Custom Patina Finishes



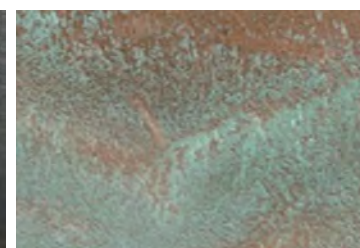
Slate Black



Japanese Brown



Black Magic



Vista Brown

**Some options outside of standard inclusions are available at an additional cost.*

CF + D | custom fireplace design

5230 Harvester Rd. Unit # 2, Burlington, ON, L7L 4X4

1.866.909.3070

www.customfireplacedesign.com